

Speedex putty soft

Instructions for use

EN

Carefully read the instructions prior to use.

Product description

Speedex® is a two-component impression material based on condensation-type polysiloxanes. Speedex is intended for the recording of the current physical situation in a patient's mouth („dental impression material“) for the purpose of repairing, reshaping or replacing the patient's teeth. This includes base materials (Speedex® putty soft; Speedex® putty; Speedex® light body; Speedex® medium) and the universal activator (Speedex® Universal Activator). After manual mixing of base and activator, the Speedex materials form pastes which are used individually or in combination as dental impression material, usually together with a standard commercial or individual impression tray and using conventional impression techniques.

Composition Speedex putty soft

Condensation-type silicone elastomer, putty material.

- Polysiloxane
- Colour: light blue
- Peppermint oil

Indication

- Primary impression in the putty-wash impression technique
- Pick-up impression in the simultaneous mixing technique
- Impressions for study models, orthodontic models, keys and protective isolation of teeth during fitting of prostheses

Contraindication

- Do not use in the case of known allergies to ingredients of the Speedex impression materials.
- Loose teeth can be further loosened or extracted by taking an impression
- Material combinations with impression materials of other manufacturers are not permitted

Safety instructions

⚠ WARNING

- Eyes, respiratory organs and skin can be irritated by Speedex Universal Activator
- Impressions that come into contact with the oral mucosa may be contaminated. Observe disinfection instructions
- Only supplied to dentists and dental laboratories or upon their instructions

NOTICE

- Contains nano materials (bonded particles)

Side effects / Interactions

No harmful reactions or secondary effects on patients and / or dental personnel are known.

Users / Patient target groups

The use of Speedex impression materials in the patient's mouth may only be undertaken by specialist personnel such as dentists and dental assistants with special qualifications. Suitable for all patient groups.

PREPARATION

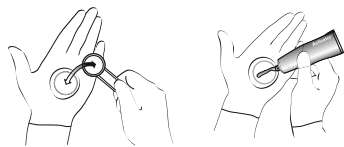
Trays

All impression trays that have been designed for dental use, either prefabricated or individual, can be used for impression taking. For perfect adhesion, we recommend applying a thin layer of COLTENE® Adhesive to the trays before use. This prevents detachment of the impression material during removal from the oral cavity. Detailed information on the application can be found in the COLTENE Adhesive Instructions for Use.

PROPER USE

Dosage

Dose Speedex putty soft with enclosed measuring-scoop (scrape off surplus). Spread out the material in the palm of hand. For each measuring scoop press the scoop rim once into the material on the hand. Apply one strand length of Speedex Universal Activator per circle diameter. Make sure that the tins and tubes are closed immediately after use.



⚠ Take the following safety precautions when working with Speedex Universal Activator:

- Protective glasses are recommended. In case of contact with eyes, rinse immediately with water and consult an ophthalmologist
- Avoid direct skin contact
- Always wear protective gloves when working (vinyl gloves are recommended)
- Do not swallow or ingest

APPLICATION TIME

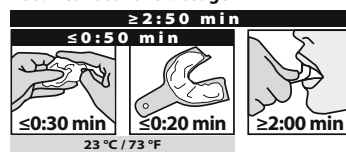
Normal dosage



Intensive kneading, high temperatures and humidity accelerate the curing of the impression materials. Low temperatures slow down the curing process.

By over- and underdosing the Speedex Universal Activator the setting time can be accelerated or slowed down (max. ± 20% of the normal dosage)

20% Activator overdose



20% Activator underdosage



Mixing

Fold material and knead with fingers until an absolutely homogeneous colour is attained, but for at least 30-45 seconds mixing time. The use of a stopwatch is recommended for this purpose. When using mechanical mixing devices, observe the instructions of the device manufacturer. After successful (streak-free) mixing, form the material into a strand and place it immediately into the impression tray.

Impression

Insert the impression tray, loaded with impression material, into the oral cavity and press for 2-3 seconds. Then hold in situ until the material has set completely.

Test methods for correct application

Material residue needs considerably more time to set at room temperature than in the patient's mouth. You should therefore check intraorally if the material is set before removing from the mouth. If the manual pressure test does not leave a pressure mark in the impression material after the time specified in the chapter on „Dosage“, the impression can be removed from the patient's mouth. However, if the test leaves a visible pressure mark in the material, the material is not yet fully cured.

CLEANING & DISINFECTION

Cleaning of the impression

After the putty impression has been removed from the patient's mouth, it must be thoroughly cleaned before further use with wash materials (Speedex light body/medium). After cleaning, the final impressions can be disinfected with commercially available disinfectant solutions (e.g. Dürr Dental SE, MD 520 impression disinfection) specifically designed for dental impression materials and dried using air pressure. If H₂O₂ hydrogen peroxide is used for disinfection, it is recommended to thoroughly rinse with lukewarm water afterwards in order to avoid bubble formation.

Cleaning of trays:

The impression can be removed with a blunt instrument. Adhesive residues can be dissolved by placing in commercially available universal solvents or benzene.

Manufacture of models

The ideal time lies between 30 min and 72 h after taking the impression. The surface tension will be reduced and pouring will be facilitated if the impression is briefly washed out with a detergent and rinsed thoroughly in lukewarm clear water afterwards. All industry-standard dental stone model materials (i.e. Fujirock Dental Stone, Hard Rock Dental Stone) can be used.

Shelf life and storage

- Expiry date: see label on primary packaging
- Storage temperature: 15-23°C / 59-73°F
- Relative humidity: 50% ± 10%
- Shelf life after first opening, 3 months

Protect against exposure to heat and sun. Avoid extreme temperature fluctuations. Close tins and tubes immediately after use.

Disposal

Speedex impression materials can be disposed of together with household waste in small quantities. Special country-specific regulations may apply.

Technical data according to ISO 4823

The technical data were determined at 23°C/73°F and 50% relative humidity.

Mixing time:	00:30 min
Processing time:	≤1:15 min
Oral setting time:	3:00 min
Mixing ratio Putty / Activator:	23 ml / 1 ml resp. 6,90 g / 0,15 g

Reporting obligation

All serious incidents occurring in conjunction with this product must be reported immediately to the manufacturer as well as to the competent authority.

For SDS see

www.coltene.com



0123



Glossary



Consult instructions for use



Keep away from sun light



Temperature limitation



Marking of Conformity Europe



Identification for Ukraine



Legal Manufacturer



Expiry Date



Batch Code



RX only



Medical Device



Manufacturing Date



Unique Device Identifier



European Authorized Representative



Reference Number

Coltène/Whaledent AG

Feldwiesenstrasse 20
9450 Altstätten/Switzerland
T +41 71 757 53 00
F +41 71 757 53 01
info.ch@coltene.com

COLTENE