

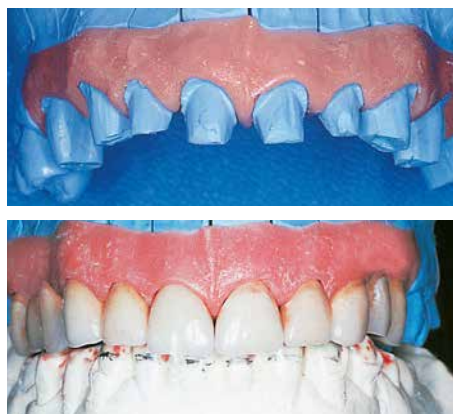


Gi-Mask

The mask that doesn't hide a thing

Gi-Mask

coltène® Gi-Mask is a silicone-based gingival mask, for precise reproduction of gingival contours around the margins. It maintains its accuracy for days and right up to the moment until the restoration is finished.



Gi-Mask. For perfect esthetics, ideal functionality and anatomy for optimal periodontal hygiene.

Several indications with just as many advantages.

Gi-Mask prevents overcontouring of single crowns and bridgework, and provides information for correct design of functional interproximal spaces.

Gi-Mask secures all of the details necessary when producing wax patterns for metal ceramic frame work and allows the correct positioning of attachments.

When using this technique for telescope cases, a perfect transition from primary to secondary components is ensured. An indispensable aid for the fabrication of supraconstructions. No guess work any more.

Material properties which meet all requirements!

Gi-Mask is an extremely precise dental silicone, which thanks to its unsurpassed dimensional stability, can retain the obtained details over a number of days and still reproduce them undistorted. These two properties combine for accurate reproduction and reliability. Its excellent flow characteristics guarantee the reproduction of the entire periodontal situation needed. Its firmness and resilience are very similar to the natural gingiva.

Order information

8030 Gi-Mask Starter-Kit

Gi-Mask Base	150 ml
Gi-Mask Activator	18 ml
GI-MASK Universal Separator	50 ml
Dosing syringe	1
Applicator with mixing-rod	1
Application syringe	1
Tips for the application syringe	3

8035 Gi-Mask Single

Gi-Mask Base	150 ml
Gi-Mask Activator	18 ml
Dosing syringe	1
Applicator with mixing-rod	1
Application syringe	1
Tips for the application syringe	3

8037 Gi-Mask Refill

Gi-Mask Base	150 ml
Gi-Mask Activator	18 ml
Dosing syringe	1

8000 Gi-Mask Separator Single

GI-MASK Universal Separator	50 ml
-----------------------------	-------

© COLTENE – www.coltene.com

Coltène/Whaledent AG

Feldwiesenstrasse 20
9450 Altstätten / Switzerland
T +41 71 757 5300
F +41 71 757 5301
info.ch@coltene.com

Coltène/Whaledent Inc.

235 Ascot Parkway
Cuyahoga Falls, Ohio 44223 / USA
T +1 330 916 8800
F +1 330 916 7077
info.us@coltene.com

Coltène/Whaledent Ltd.

The President Suite
Kendal House, Victoria Way
Burgess Hill, West Sussex
RH15 9NF / UK
T +44 1444 235486
F +44 1444 870640
info.uk@coltene.com

 **COLTENE**