

PROFESSIONAL TOOTH BRIGHTENING SYSTEM

BRILLIANT Lumina

Natural bright smile



 **COLTENE**

H₂O₂
was yesterday!

PAP
is the future of tooth
brightening.

BRILLIANT Lumina offers you an innovative in-office solution for tooth brightening – the first formula without hydrogen peroxide and carbamide peroxide. This is because BRILLIANT Lumina is based on the active ingredient PAP (phthalimido peroxy caproic acid). What makes it so special: the unique formula enables the PAP concentration to be kept sufficiently high to achieve a naturally brighter smile during treatment.

BRILLIANT Lumina – an asset for your practice

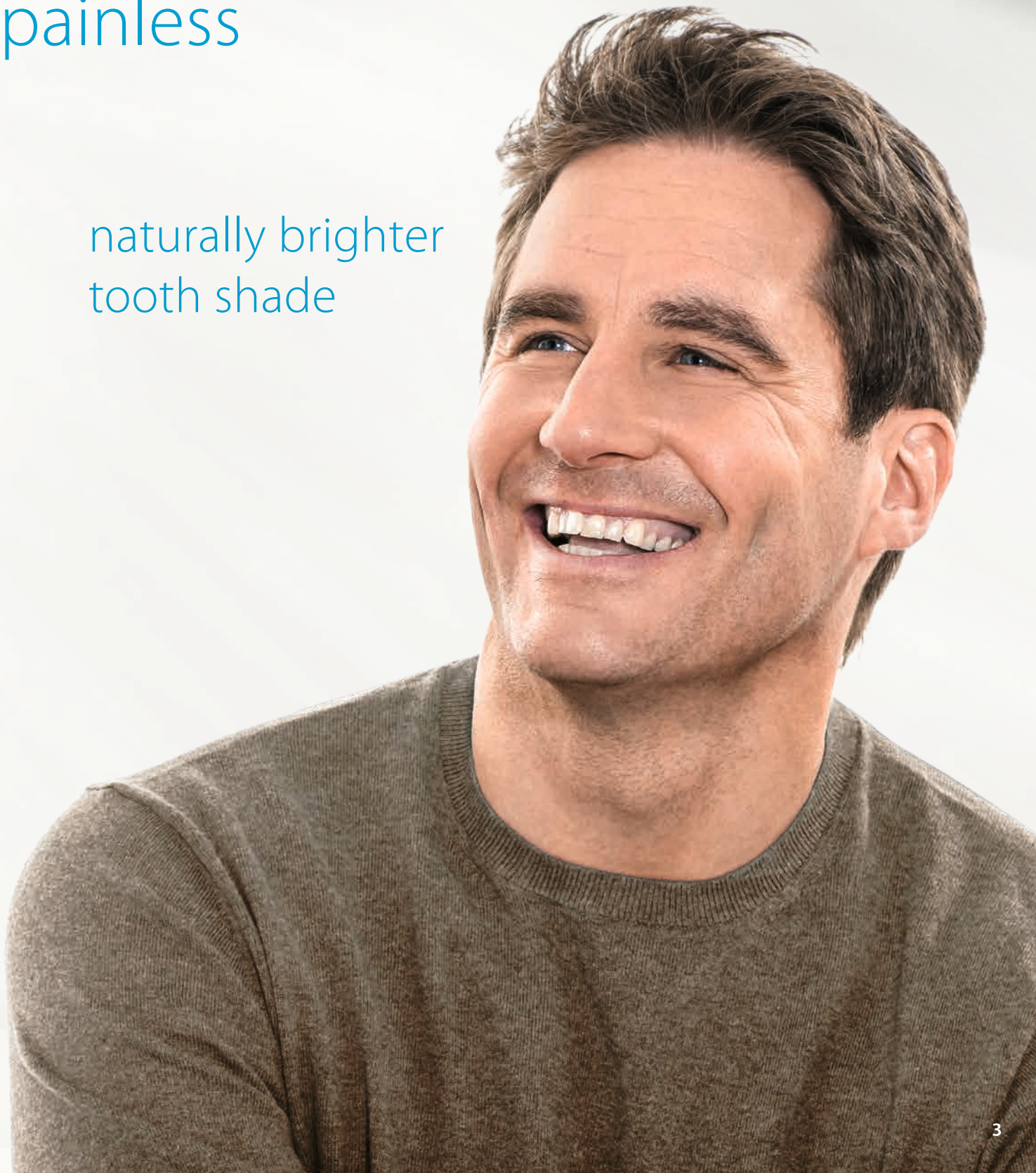
- ▶ Satisfied patients – no tooth sensitivity during or after treatment.
- ▶ Gentle on the tooth structure – analyses of tooth surfaces show that BRILLIANT Lumina does not have an erosive effect on the tooth structure.
- ▶ Simple treatment protocol – the uncomplicated application of BRILLIANT Lumina can also be performed by dental practice staff.

not based on
hydrogen peroxide

gentle on the teeth

painless

naturally brighter
tooth shade



BRILLIANT Lumina Workflow



Before tooth brightening with BRILLIANT Lumina, a check-up is performed and the biofilm is removed.

Steps 4-9 are repeated



The BRILLIANT Lumina activator is added to the gel.



The two components are mixed.



The gel is applied to the teeth.



Finally, the gingival barrier and the cotton rolls are removed.



After treatment, the mouth can be rinsed with water and a little can be drunk.



The reference shade is determined again. The result of the BRILLIANT Lumina treatment is a naturally brighter tooth shade.



At the beginning, the reference shade of the teeth is evaluated together with the patient.



The gingiva is protected with cotton rolls and a gingival barrier.



One jar of gel is opened per application cycle.



The gel is left on the tooth surfaces during the application period.



The gel can be aspirated precisely after the application cycle using the ROEKO Surgitip.



Then the entire oral cavity is cleaned with water. The VacuSoft volumetric aspirator provides optimum support for this work step.



» I'm extremely satisfied: teeth brightening with BRILLIANT Lumina was completely painless and my teeth are naturally brighter – exactly what I wanted. «

Carmen, 47 years

For more information
lumina.coltene.com



Convincing results

Well-documented patient cases and consistent results confirm the reliability of BRILLIANT Lumina. And patient satisfaction is also impressive.

Before and after images of tooth brightening with BRILLIANT Lumina



The clinical outcomes depend on the individual circumstances of the patient.



» I've never had tooth bleaching before because I was worried about unnaturally white teeth and pain sensitivity. However, the gentle method of BRILLIANT Lumina quickly convinced me. The natural brightening of my teeth is exactly what I was looking for – and all without pain during or after treatment. «

Andreas, 27 years

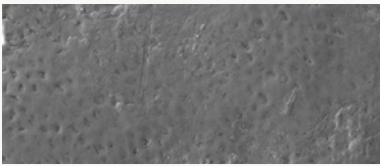
Scientifically based

Study on the surface structure of tooth surfaces

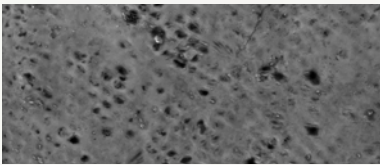
An analysis of the tooth samples impressively demonstrates that the tooth structure is not eroded after treatment with BRILLIANT Lumina. In contrast, a product containing 40% hydrogen peroxide leads to structural changes of the tooth surface.

BRILLIANT Lumina

Application of gel for 4 × 15 minutes



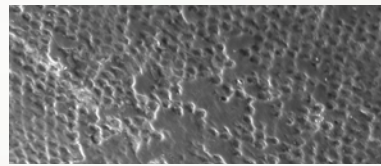
Physiological tooth structure, identifiable tubules



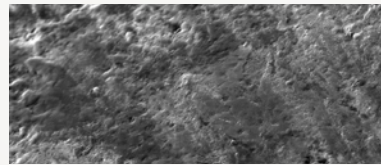
No major changes are evident, the surface is still rather smooth, the dentine tubules are visible

Hydrogen peroxide 40%

Application of gel for 3 × 20 minutes



Physiological tooth structure, identifiable tubules

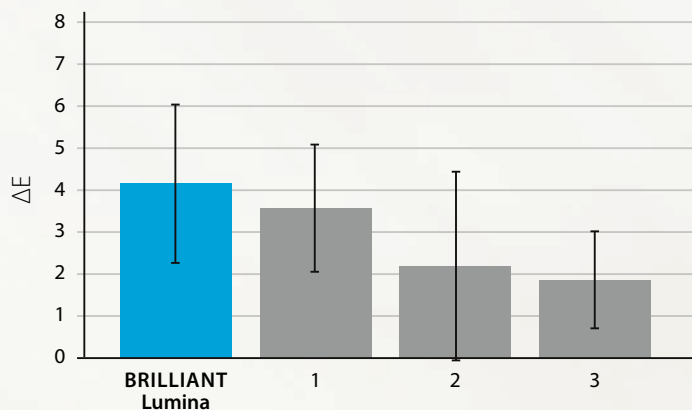


Fissured surface with change in surface morphology

Source: Empa, Swiss Federal Laboratories for Materials Science and Technology

Study on the shade change of tooth samples

Compared to conventional in-office bleaching products with hydrogen peroxide, BRILLIANT Lumina demonstrates effective brightening of the enamel samples. The brightening effect acts specifically on the tooth enamel. This keeps the tooth shade natural, as the shade of the dentine core is altered less.



ΔE = Colorimetric difference between original and bleached sample

- 1 = Competitor product with 40% hydrogen peroxide
- 2 = Competitor product with 25% hydrogen peroxide
- 3 = Competitor product with 6% hydrogen peroxide

Source: Fraunhofer IMWS

For more information about the studies please go to

lumina.coltene.com



Your **BRILLIANT** Lumina Kit for gentle tooth brightening

BRILLIANT Lumina Basic Kit

65002864

- 4 × Gel
- 1 × Activator
- 1 × Patient brochure



Products for the entire tooth brightening workflow

ROEKO Parotisroll

160001

Dental roll with integrated
spring action plastic rod

ROEKO Luna Gold

109102

Easy to remove cotton
wool roll due to skin-
friendly fleece

ROEKO Surgitip

462025

For targeted aspiration

ROEKO VacuSoft

60023549

High-volume gentle
aspiration due to soft tips

Find out more about other **BRILLIANT** products and their special benefits



BRILLIANT EverGlow
Universal Submicron Hybrid Composite



BRILLIANT Crios
Reinforced Composite Bloc for Permanent Restorations

© COLTENE – www.coltene.com

Imprint / Publisher

Coltène / Whaledent AG
Feldwiesenstrasse 20
9450 Altstätten / Switzerland
T +41 71 757 53 00
info@coltene.com

Sales Contact

Coltène / Whaledent Ltd.
The President Suite
Kendal House, Victoria Way
Burgess Hill, West Sussex
RH15 9NF/UK
+44 1444 235486
info.uk@coltene.com

Service Center

service@coltene.com
00 800 11 0000 12 (UIFN)
Mon. to Fri. 8 a.m. to 5 p.m. CEST

 **COLTENE**