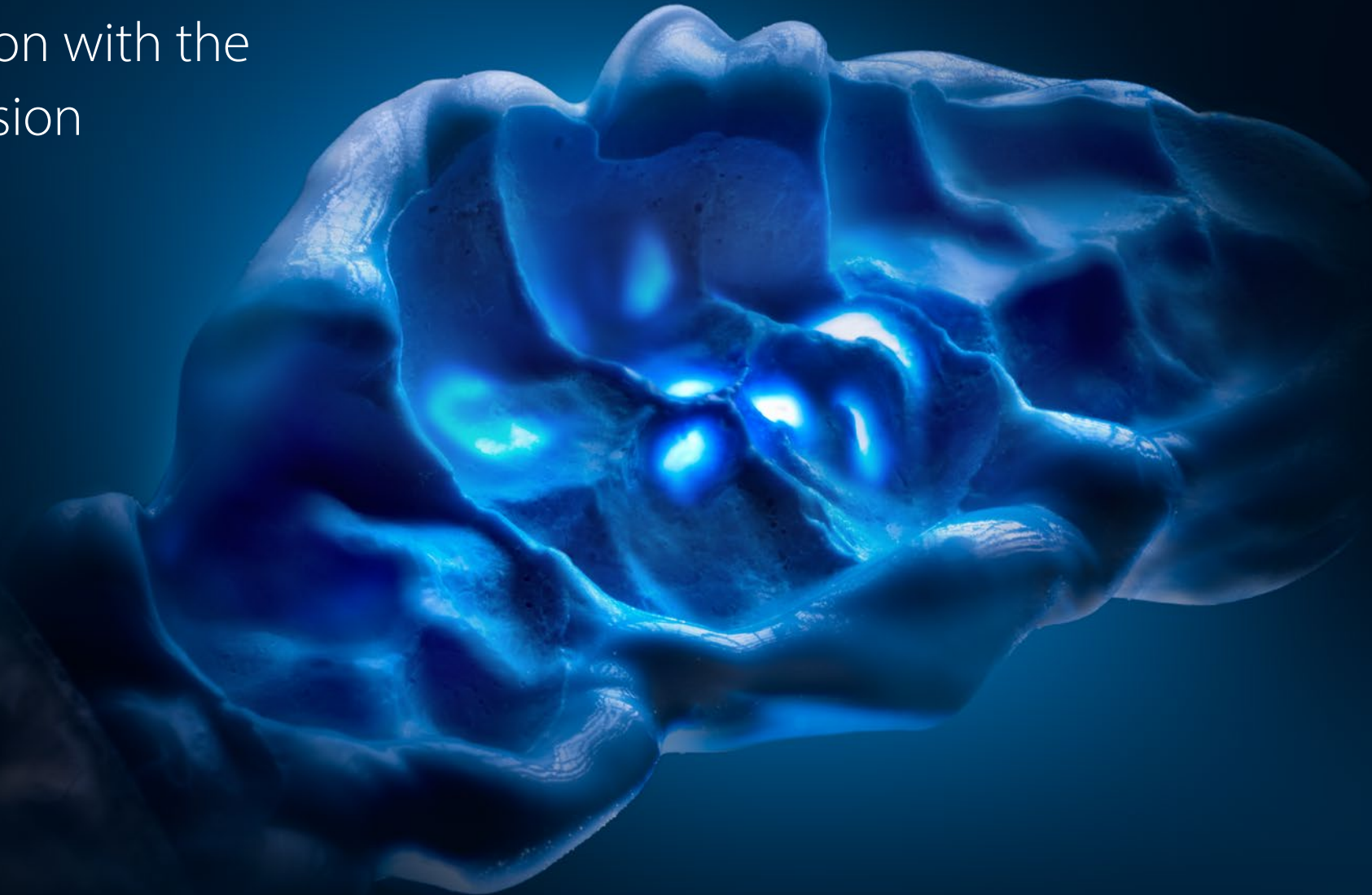


A-SILICONE BITE REGISTRATION MATERIAL

 COLTENE

# Jet Blue Bite

Bite registration with the  
highest precision





"I prefer to use Jet Blue Bite superfast. It is initially very soft, so the patient does not feel any biting resistance, and it is easy to maintain the position during the short setting time. The material can be easily injected between the teeth to register the lateral, medial, and protrusive positions. Jet Blue Bite superfast provides me with excellent results quickly and easily".

Dr. Sylvia Rahm, Germany

"I enjoy working with Jet Blue Bite because its long-lasting dimensional stability and fracture resistance impress me. The bite registrations can be quickly and effectively processed using a scalpel or carbide burs, allowing me to make precise adjustments for articulations. It is a product that makes my work easier and offers exceptional detail reproduction".

Robert Arvai, Laboratory Technician, Switzerland



# Bite registration with the highest precision

Accurate bite registration is essential to ensure a true-to-life representation of the occlusion between the upper and lower teeth in the articulator. Correspondingly, the requirements placed on the material are varied. COLTENE's decades of expertise in high-quality silicone materials are reflected in Jet Blue Bite, a bite registration material that delivers fast and precise results.

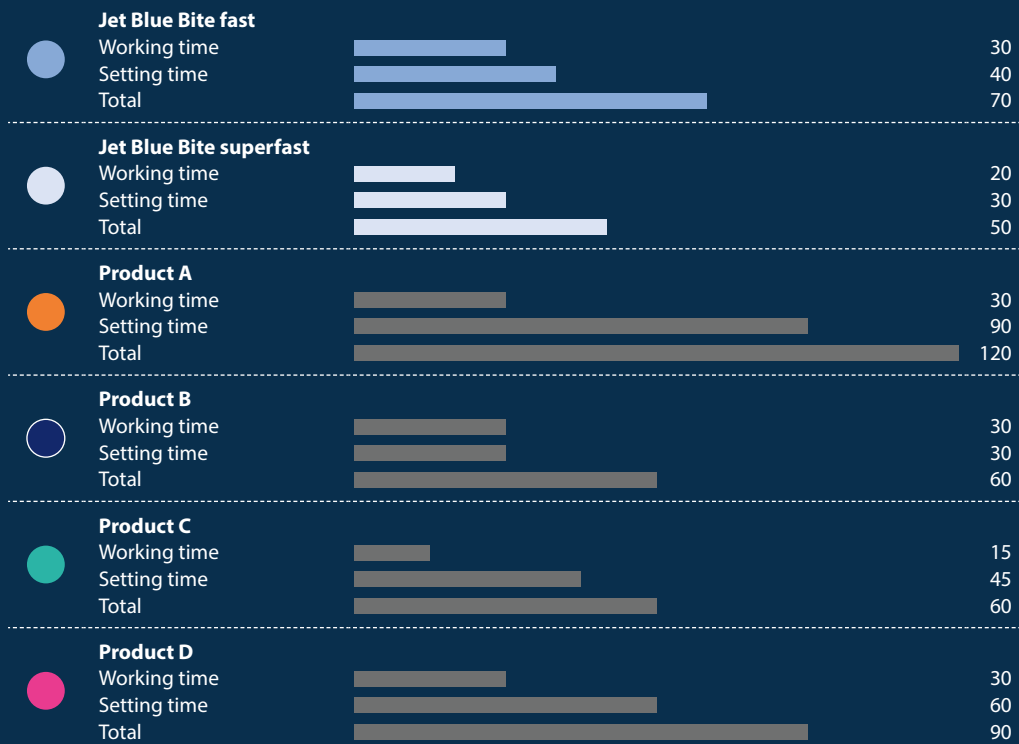


## Mousse-like consistency

- Completely natural occlusion thanks to the mousse-like consistency
- No rebound effect when biting down
- Does not seep into interdental spaces

# Processing & setting time

- Jet Blue Bite is offered in two setting times: fast and superfast
- The short time spent in the mouth makes it patient-friendly
- Short setting times reduce the risk of occlusion distortion caused by movement during bite registration



## Flexibility with high final set hardness

- Materials with a high Shore-A hardness are more resistant to wear and deformation. They can be used over an extended period of time.
- The combination of final hardness and slight flexibility allows trimming or grinding without the bite registration breaking.
- The Shore-A hardness of Jet Blue Bite fast and superfast is 88 Shore-A.



# Technical Specifications

Bite register	Silicone	Shade	Shore hardness*	Dimensional stability	Working time	Setting time	Taste
Jet Blue Bite fast	A		88 A	0.08 %	30 sec.	40 sec.	Neutral
Jet Blue Bite superfast	A		88 A	0.12 %	20 sec.	30 sec.	Neutral

Shore hardness can vary between +/-2

## Order Information

### Refills

**6491 Jet Blue Bite fast**  
 1 × Cartridge, 50 ml  
 1 × Universal Mixing Tip, 6 pcs.  
 1 × Spreader Tips, 6 pcs.

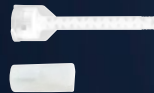
**6493 Jet Blue Bite superfast**  
 1 × Cartridge, 50 ml  
 1 × Universal Mixing Tip, 6 pcs.  
 1 × Spreader Tips, 6 pcs.

**6495 Jet Blue Bite fast**  
 4 × Cartridge, 50 ml  
 1 × Universal Mixing Tip, 12 pcs.  
 1 × Spreader Tips, 12 pcs.

**6497 Jet Blue Bite superfast**  
 4 × Cartridge, 50 ml  
 1 × Universal Mixing Tip, 12 pcs.  
 1 × Spreader Tips, 12 pcs.

### Accessories

**60019663 Universal Mixing Tip, 40 pcs.**  
**60019694 Universal Mixing Tip, 100 pcs.**  
**6223 Spreader Tips, 100 pcs.**



© COLTENE – www.coltene.com



**Imprint / Publisher**  
**Coltene/Whaledent AG**  
 Feldwiesenstrasse 20  
 CH-9450 Altstätten  
 +41 71 757 5300  
 info.ch@coltene.com

**Service Centre**  
 Mon.-Fri.  
 08:00 to 17:00 CEST | service@coltene.com

**Sales Contact**  
**Coltene/Whaledent Ltd.**  
 The President Suite  
 Kendal House, Victoria Way  
 Burgess Hill, West Sussex  
 RH15 9NF/UK

+44 1444 235486  
 info.uk@coltene.com



6493

6491