

# Luting Compass

A step-by-step guide for  
permanent, indirect restorations.

# Overview of step-by-step guides

## Choose your procedure



### FIND YOUR INSTRUCTION-PAGE WITH THE COMPASS-MAP BELOW

**1st CHOICE** WHAT **RESTORATION TYPE** ARE YOU PERFORMING?

**2nd CHOICE** WHAT **RESTORATION MATERIAL** ARE YOU USING?

**3rd CHOICE** WHAT **PREPARATION** ARE YOU LUTING ON?

**4th CHOICE** WHAT **LUTING MATERIAL** DO YOU PREFER TO USE?

		1		2		3		4	
								A Dual-curing Resin Cement B Light-curing Composite	
		Dentine/Enamel		Composite		Zirconia / Metal		Silicate Ceramic	
		A	B	A	B	A	B	A	B
Inlay/ Onlay/ Overlay	Composite	1	6						
	Silicate Ceramic	2	7						
	Zirconia	2	6						
	Metal (e.g. Gold)	2							
Veneer	Composite		6						
	Silicate Ceramic		7						
	Zirconia		6						
Crown / Bridge	Composite	1	6	1	6	3	6	3	8
	Silicate Ceramic	2	7	2	7	4	7	4	9
	Zirconia	2	6	2	6	4	6	4	8
	Metal (e.g. Gold, PFM, CoCr)	2		2		4		4	
Post	Metal (e.g. Titanium)	5							
	Glass Fiber	5							
	Zirconia	5							



These guidelines are simplified graphical step-by-step instructions. Please refer to the official instructions for use for further details. Steps/times may vary, depending on materials used.



Light-curing luting materials (see option 6-9) may only be used if sufficient light exposure through the restoration can be guaranteed.

1

2

3

4

5

6

7

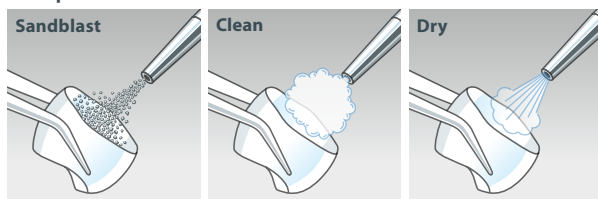
8

9



## 1st Step Pretreatment Restoration

Composite: Sandblast



## 2nd Step Pretreatment Preparation

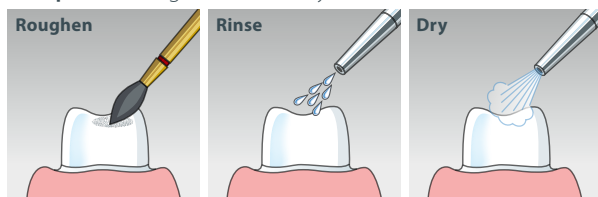
### Material Selection

Etching	Etchant Gel 5*
Roughening	COLTENE Diamond Instruments with fine grit (red color ring)

Tooth enamel: Phosphoric etch (selective etch)\*



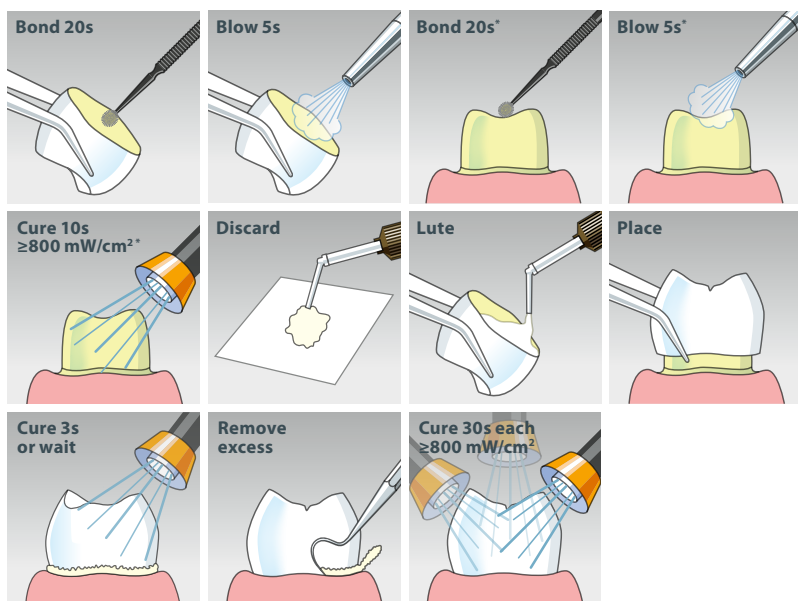
Composite: Roughen with rotary instrument



## 3rd Step Luting

### Material Selection

Luting	SoloCem
Priming Restoration	ONE COAT 7 UNIVERSAL
Priming Preparation	ONE COAT 7 UNIVERSAL*

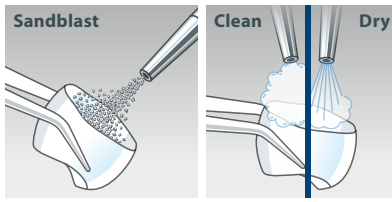


\*Optional: If improved bond strength is required due to low retentive preparation

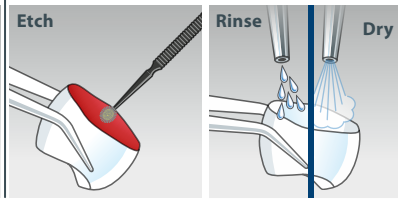


## 1st Step Pretreatment Restoration

**Zirconia/Metal:** Sandblast



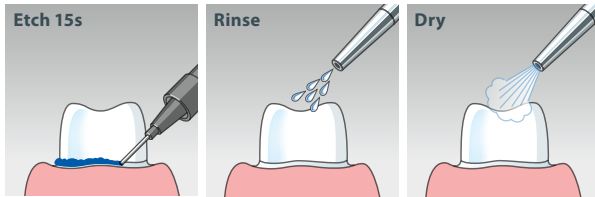
**Silicate Ceramic:** Hydrofluoric etch



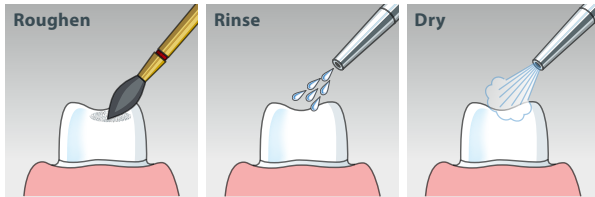
## 2nd Step Pretreatment Preparation

Material Selection	
Etching	Etchant Gel S*
Roughening	COLTENE Diamond Instruments with fine grit (red color ring)

**Tooth enamel:** Phosphoric etch (selective etch)\*

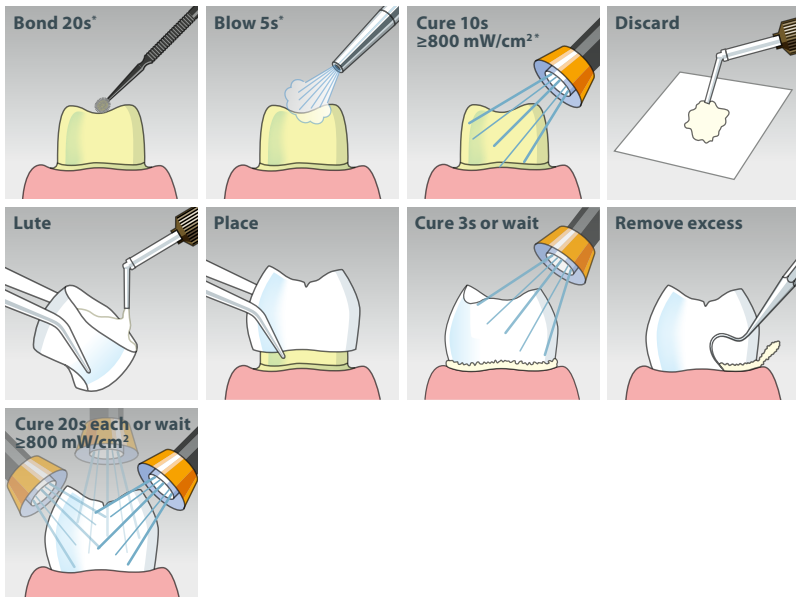


**Composite:** Roughen with rotary instrument



## 3rd Step Luting

Material Selection	
Luting	SoloCem
Priming Restoration	-
Priming Preparation	ONE COAT 7 UNIVERSAL*



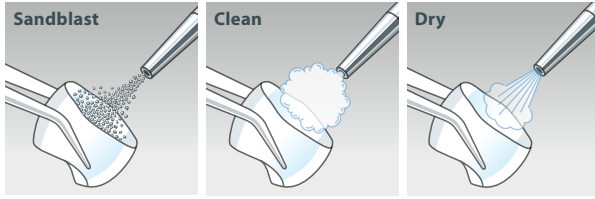
\*Optional: If improved bond strength is required due to low retentive preparation





## 1st Step Pretreatment Restoration

Composite: Sandblast

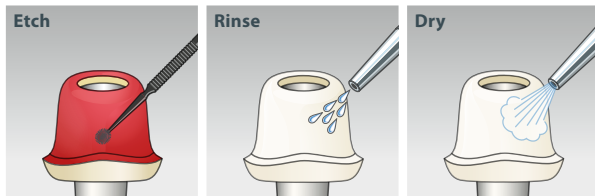


## 2nd Step Pretreatment Preparation

Zirconia/Metal: Sandblast

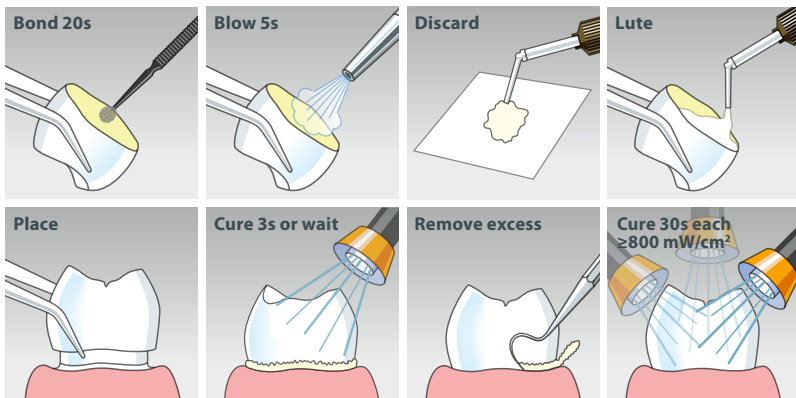


Silicate Ceramic: Hydrofluoric etch



## 3rd Step Luting

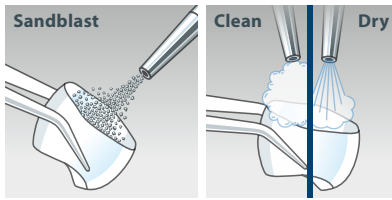
Material Selection	
Luting	SoloCem
Priming Restoration	ONE COAT 7 UNIVERSAL
Priming Preparation	-



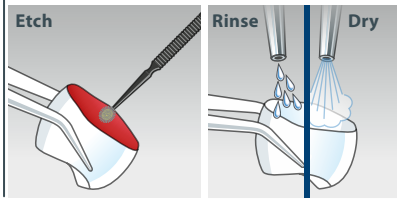


## 1st Step Pretreatment Restoration

Zirconia/Metal: Sandblast

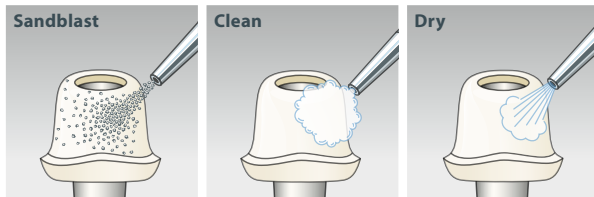


Silicate Ceramic: Hydrofluoric etch

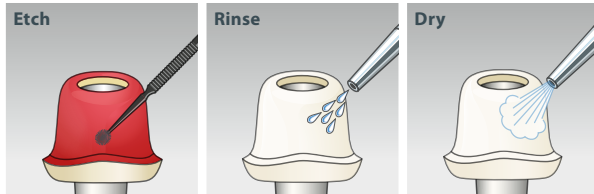


## 2nd Step Pretreatment Preparation

Zirconia/Metal: Sandblast



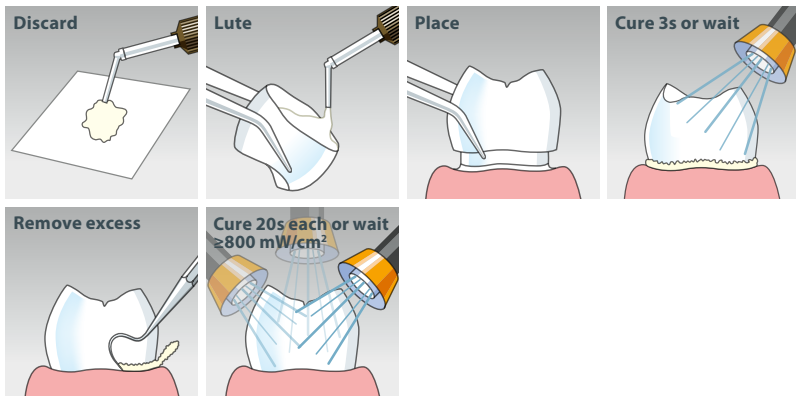
Silicate Ceramic: Hydrofluoric etch



## 3rd Step Luting

### Material Selection

Luting	SoloCem
Priming Restoration	-
Priming Preparation	-





### 1st Step Pretreatment Post

According to manufacturer's specifications

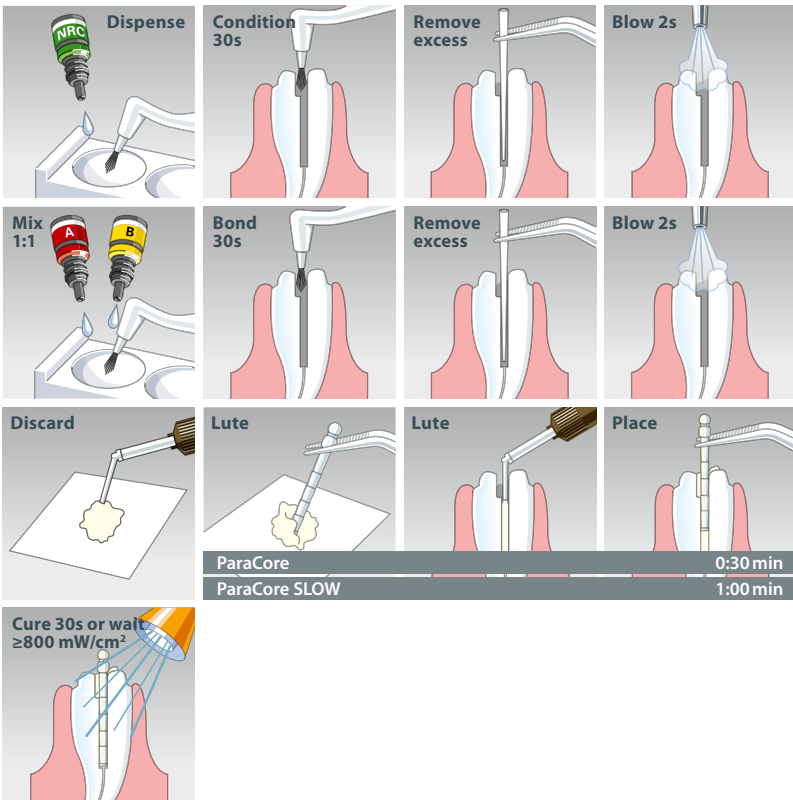
### 2nd Step Pretreatment Root Canal

Clean/Dry

### 3rd Step, Option 1 Luting

#### Material Selection

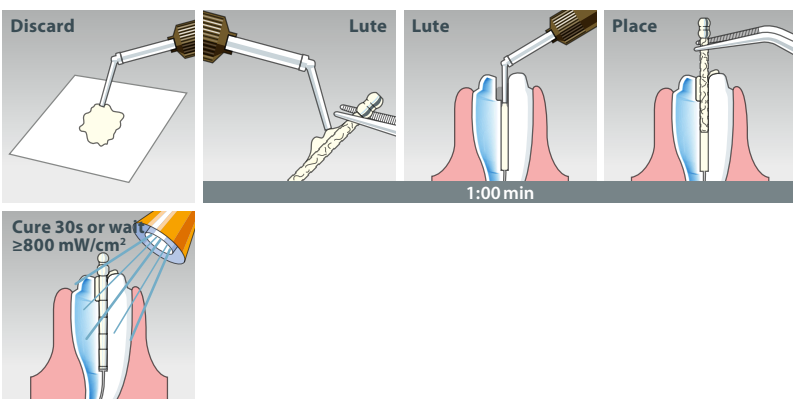
Luting	ParaCore
Priming Post	-
Priming Root Canal	ParaBond



### 3rd Step, Option 2 Luting

#### Material Selection

Luting	SoloCem
Priming Post	-
Priming Root Canal	-





## 1st Step Pretreatment Restoration

Composite/Zirconia: Sandblast



## 2nd Step Pretreatment Preparation

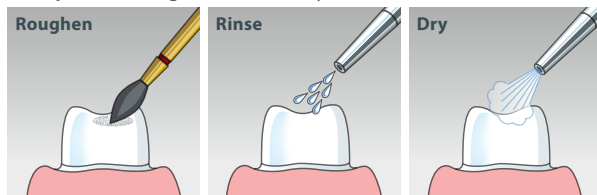
### Material Selection

Etching	Etchant Gel S
Roughening	COLTENE Diamond Instruments with fine grit (red color ring)

Tooth enamel: Phosphoric etch (selective etch)



Composite: Roughen with rotary instrument



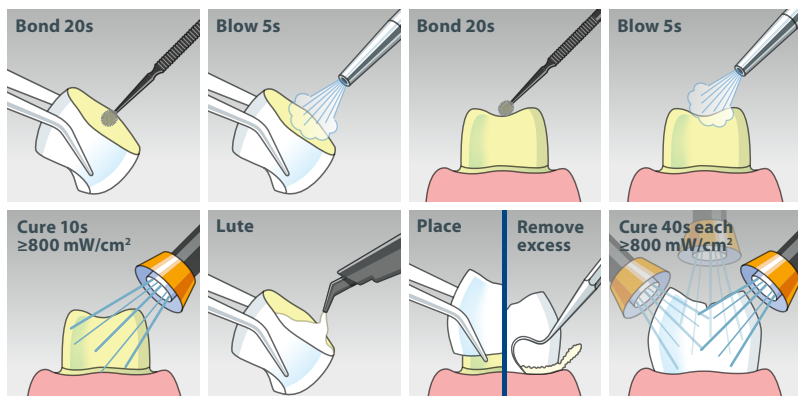
Zirconia/Metal: Sandblast



## 3rd Step Luting

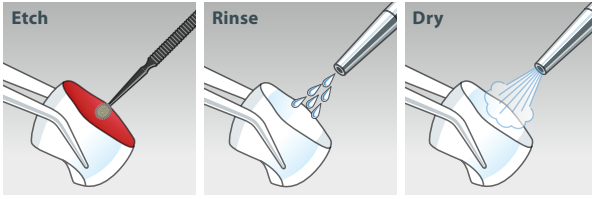
### Material Selection

Luting	BRILLIANT EverGlow/BRILLIANT EverGlow Flow
Priming Restoration	ONE COAT 7 UNIVERSAL
Priming Preparation	ONE COAT 7 UNIVERSAL



## 1st Step Pretreatment Restoration

**Silicate Ceramic:** Hydrofluoric etch



## 2nd Step Pretreatment Preparation

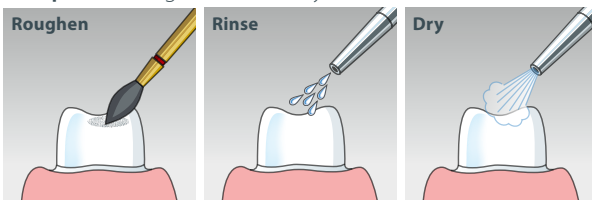
### Material Selection

Etching	Etchant Gel S
Roughening	COLTENE Diamond Instruments with fine grit (red color ring)

**Tooth enamel:** Phosphoric etch (selective etch)



**Composite:** Roughen with rotary instrument



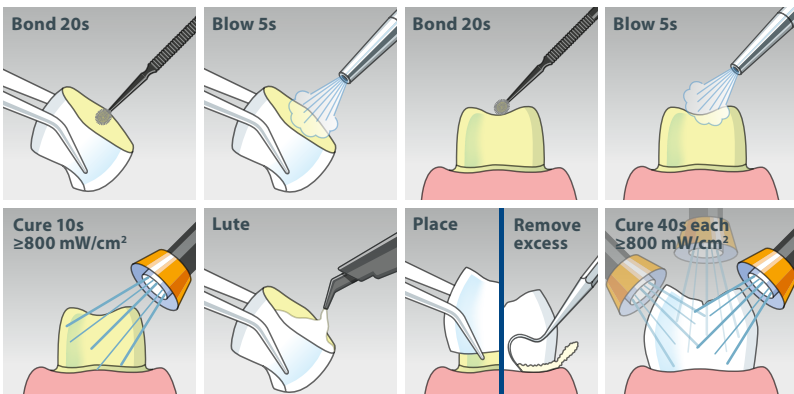
**Zirconia/Metal:** Sandblast



## 3rd Step Luting

### Material Selection

Luting	BRILLIANT EverGlow/BRILLIANT EverGlow Flow
Priming Restoration	ONE COAT 7 UNIVERSAL
Priming Preparation	ONE COAT 7 UNIVERSAL







## 1st Step Pretreatment Restoration

Composite/Zirconia: Sandblast



## 2nd Step Pretreatment Preparation

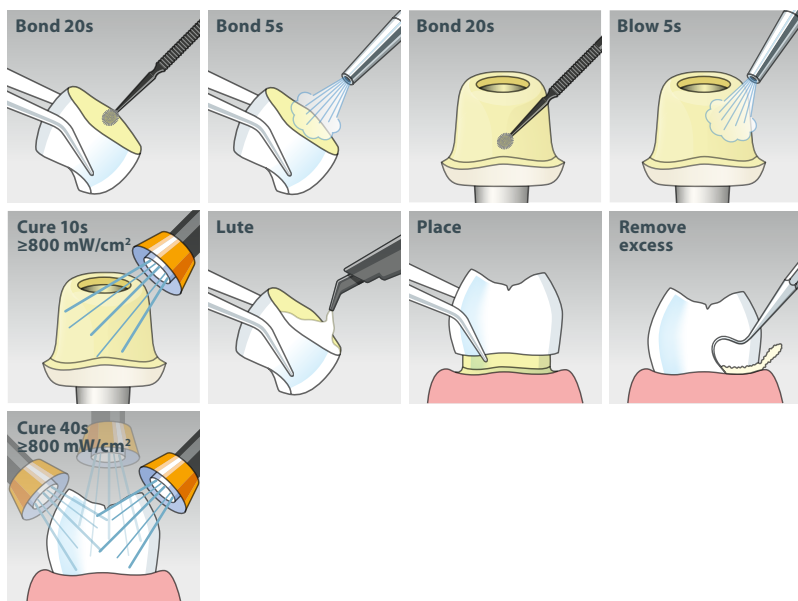
Silicate Ceramic: Hydrofluoric etch



## 3rd Step Luting

### Material Selection

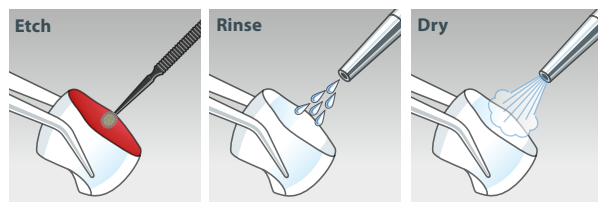
Luting	BRILLIANT EverGlow/BRILLIANT EverGlow Flow
Priming Restoration	ONE COAT 7 UNIVERSAL
Priming Preparation	ONE COAT 7 UNIVERSAL





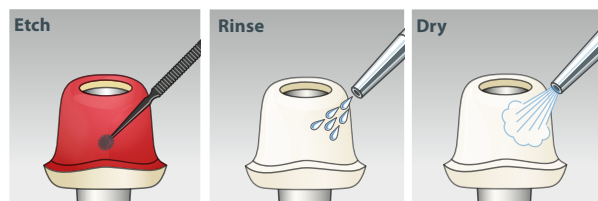
## 1st Step Pretreatment Restoration

Silicate Ceramic: Hydrofluoric etch



## 2nd Step Pretreatment Preparation

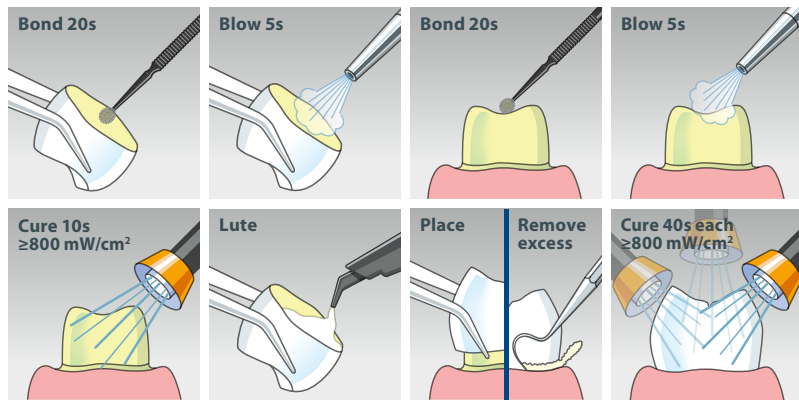
Silicate Ceramic: Hydrofluoric etch



## 3rd Step Luting

### Material Selection

Luting	BRILLIANT EverGlow/BRILLIANT EverGlow Flow
Priming Restoration	ONE COAT 7 UNIVERSAL
Priming Preparation	ONE COAT 7 UNIVERSAL

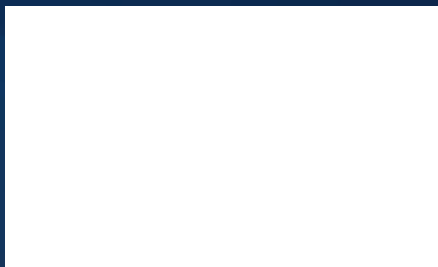


**CH Coltène/Whaledent AG**  
Feldwiesenstrasse 20  
9450 Altstätten / Switzerland

**Service Center**  
service@coltene.com

**DE Coltène/Whaledent GmbH + Co. KG**  
Raiffeisenstraße 30  
DE-89129 Langenau

© COLTENE – [www.coltene.com](http://www.coltene.com)



 **COLTENE**