

PerFect[®]TCS II

Tissue Contouring System



COLTENE

PerFect[®]TCS II

1 Single control for easy mode selection and intensity adjustment

Waterproof footswitch for hands-free electrode activation

Solid state circuitry eliminates warm-up time

Dispersive electrode completes energy flow path

Swivel cord connector improves handling

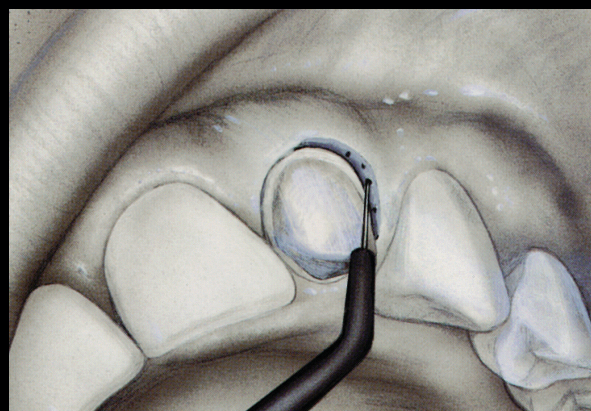


BEHIND THE TECHNOLOGY

Few technologies have the potential equal to that of electrosurgery for enhancing the efficiency and improving the results of soft tissue management. Electrosurgery uses radio-frequency energy to volatilize, cut, and coagulate soft tissue by focusing the heat energy at the small active electrode. While the active electrode remains cold, sufficient heat is generated in its path to sever and coagulate effectively. The high frequency energy focused at the active electrode returns to the electro surge through the large dispersive electrode which is placed on the back of the dental chair against the patient's back during use, thus providing an efficient and predictive completion of the energy path.

The PerFect TCS II is an advanced, monopolar electrosurge designed to simplify and enhance the results of everyday procedures performed by virtually all dentists.

CONTROL BLEEDING



Using the straight knife electrode to stop bleeding in gingival sulcus

PerFect TCS II quickly stops bleeding caused by tooth preparation or cord placement with just a few touches of the electrode

The procedure continues without delay — no more waiting or extra appointments

QUICK ACCESS TO CARIES

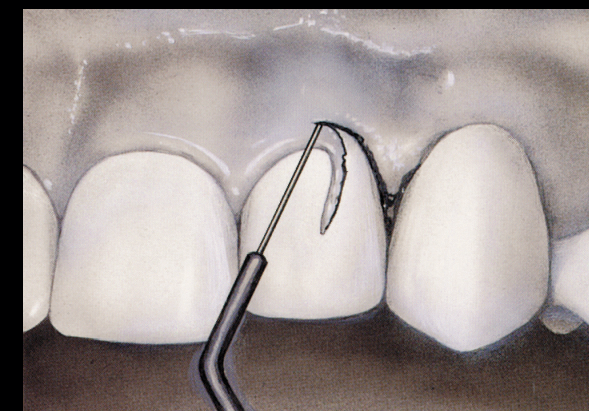


Using the long loop electrode to remove occluding gingiva

Quickly remove gingival tissue occluding carious lesions

Restorations — even with composites — may begin immediately because the operative field is blood-free

PRECISE TISSUE CONTOURING



Using the straight knife electrode to restore gingival symmetry

Shave fine, "paper-thin" layers of tissue even in hard to reach areas

Facilitate impression taking, cementation, and aesthetic procedures by removing redundant tissue with little or no bleeding

OTHER CLINICAL APPLICATIONS

- Widening gingival sulcus
- Crown lengthening
- Exposing impacted teeth
- Incising abscesses
- Removing hyperplastic gingiva
- Frenectomy

Perfect[®]TCS II

Tissue Contouring System

S8115	115V	Includes 3 sheaths
S8115T	115V	Includes 8 sheaths
S8230T	230V	Includes 8 sheaths
S8230CE	230V	Includes 3 sheaths
S8230CT	230V	Includes 8 sheaths
S8230UK	230V	Includes 3 sheaths
S8240	240V	Includes 3 sheaths









Technical Data

Overall Dimensions	4.25 x 6.25 x 8.74 in 108 x 159 x 222 mm
Weight	5.3 lbs 2.4 kg
Cut Max Power Output	50W
COAG Max Power Output	33W
Output Impedance	600 Ohms
Nominal Operating Frequency	3.68 MHz
COAG Modulation Frequency	120 Hz
COAG Modulation Wave Shape	Square wave



Each unit includes cord assembly, dispersive electrode, autoclavable electrode sheaths, hand piece holder, footswitch, owner's manual and link to introductory video.

Perfect[®]TCS II Autoclavable Electrode Sheaths

	Coag Ball	S6011A		45° Long Loop	S6015A
	45° Straight Knife	S6012A		Straight Long Loop	S6016A
	45° Tapered Knife	S6013A		45° Diamond Long Loop	S6017A
	Straight Round Loop	S6014A		90° AP 1 1/2	S6018A
Complete set of 8 electrodes		S6010A	Set of 3 electrodes (S6011A, S6012A, S6015A)		S7010A

Coltène/Whaledent Inc.
235 Ascot Parkway
Cuyahoga Falls, OH 44223 / USA
Tel. USA & Canada +1 800 221 3046
+1 330 916 8800
Fax +1 330 645 8704
info.us@coltene.com



Coltène/Whaledent AG
Feldwiesenstrasse 20
9450 Altstätten / Switzerland
Tel. +41 (0)71 757 53 00
Fax +41 (0)71 757 53 01
info.ch@coltene.com



Coltène/Whaledent GmbH + Co. KG
Raiffeisenstrasse 30
89129 Langenau / Germany
Tel. +49 (0)7345 805 0
Fax +49 (0)7345 805 201
info.de@coltene.com



COLTENE
coltene.com

P/N 31127E