

A Smile Made Brilliant



Please store **ONE COAT 7 UNIVERSAL** 4 – 8°C | 39 – 46°F



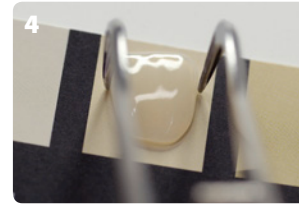
Initial Situation. Old, discoloured and abraded restorations.



Cleaning teeth.



Select composite shade for luting using the BRILLIANT EverGlow Shade Guide.



Select the shade of the shell using the BRILLIANT COMPONEER Shade Guide.



Isolate operation field using a rubber dam.



Size selection with BRILLIANT COMPONEER Contour Guide.



Prepare surfaces to be restored accordingly.



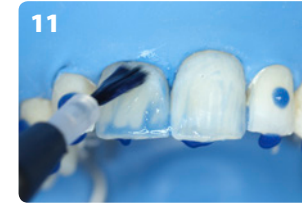
Sandblast persisting composite fillings.



Prepare interproximal areas using diamond strips.



If necessary, Try-In and adapt BRILLIANT COMPONEER.



Apply Etchant Gel and distribute to all surface areas.



Rinse of Etchant Gel after 30 s for 30 s. Air dry surface area.



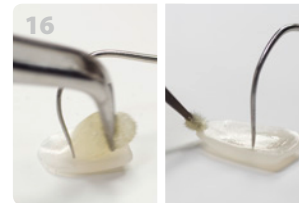
Apply ONE COAT 7 UNIVERSAL and rub in for 20 s.



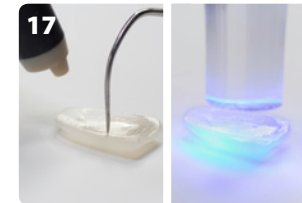
Blow gently with oil-free air for 5 s.



After placing matrices light-cure for 10 s (Light intensity ≥ 800 mW/cm²).



If contaminated, clean with 70% ethanol. Apply ONE COAT 7 UNIVERSAL and rub in for 20 s.



Gently air dry for 5 s and light cure for 10 s (Light intensity ≥ 800 mW/cm²).



Apply BRILLIANT EverGlow with tip or MB5 modelling instrument and adapt it to the margins.



If necessary, apply composite additionally onto the tooth and place BRILLIANT COMPONEER.



Move BRILLIANT COMPONEER to the final position using the Placer.



Remove major excess material and adapt composite.



Light cure palatally and buccally each for 30 s (light intensity ≥ 800 mW/cm²).



Control margins. If necessary use BRILLIANT Everglow Flow for corrections.



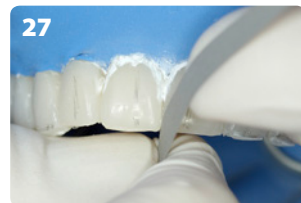
Mark tooth axis and length. Remove major excess material.



Contour palatal surfaces.



Contour incisal edges accordingly.



Finish interproximal margins and incisal edges.



Contour and prepolish using DIATECH Comprepol.



Polish with DIATECH Compresshine and Brush.



Final situation. After 3 week recall refinish bonding residues and excess spring edges.