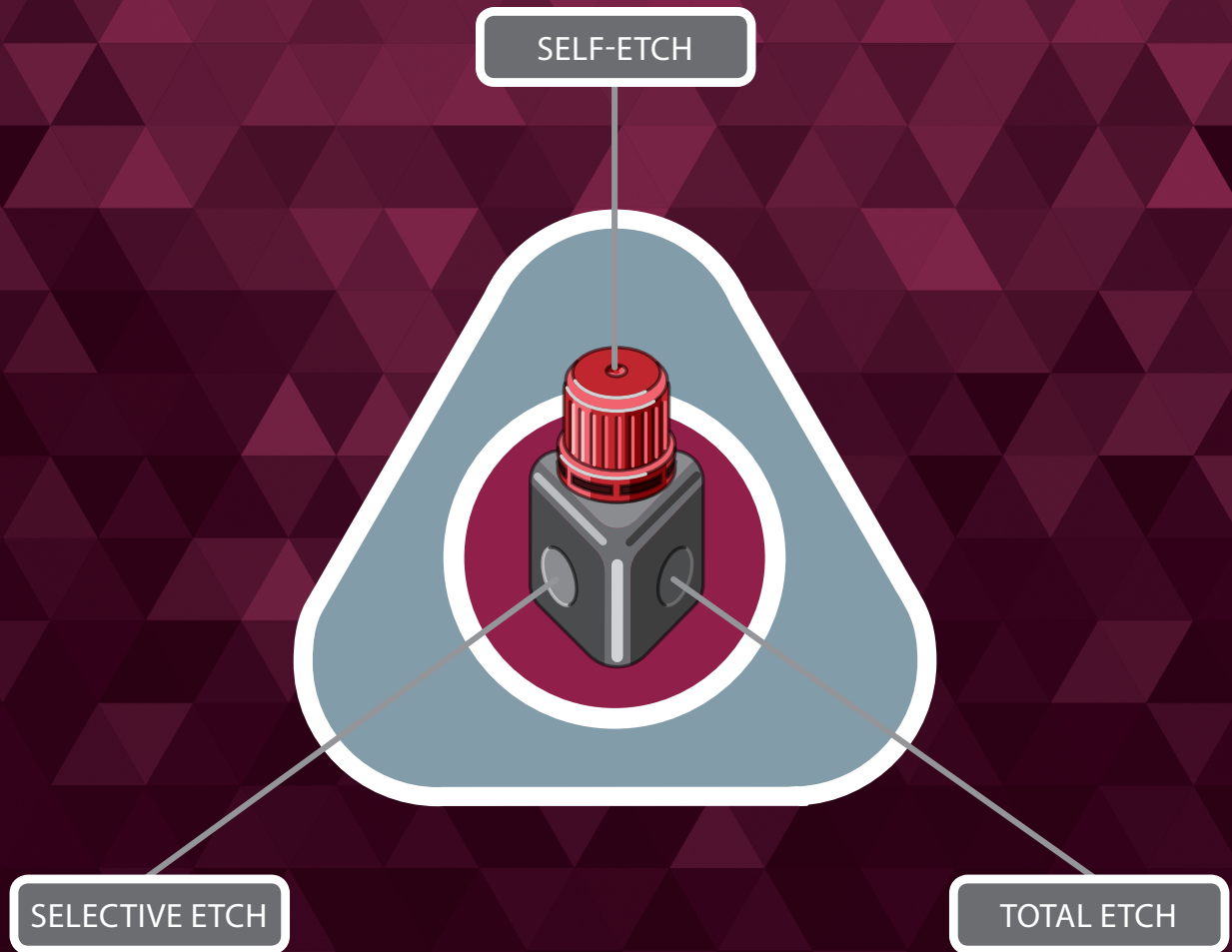


SINGLE COMPONENT LIGHT CURED UNIVERSAL ADHESIVE



**ONE COAT 7** UNIVERSAL  
ALWAYS THE RIGHT CHOICE

# One Bond for All Application Techniques

- Exceptional bonding values on enamel and dentin
- Excellent marginal seal
- Minimized postoperative sensitivity

With the system optimization of ONE COAT 7.0, the reliable all-in-one bond ONE COAT 7 UNIVERSAL is now available for every indication.

## The magic triangle

No matter whether Self-Etch, Total Etch or Selective Etch, ONE COAT 7 UNIVERSAL offers effortless bonding to materials such as gold, titanium, ceramics, zirconium oxide and composite without any additional primer or silane.

## Dosage forms

### New and unique bottle

The new ergonomic bottle with optimized dropper is distinguished by precise, clean dispensing without continued flow.

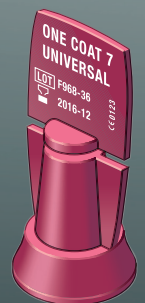
- Up to 300 applications\*
- Simplified handling
- Ergonomic



### Practical single dose

ONE COAT 7 UNIVERSAL is available as a practical single dose for hygienic single use application, for easy, efficient performance in daily practice routine.

- User-friendly
- Easy application
- Hygienic

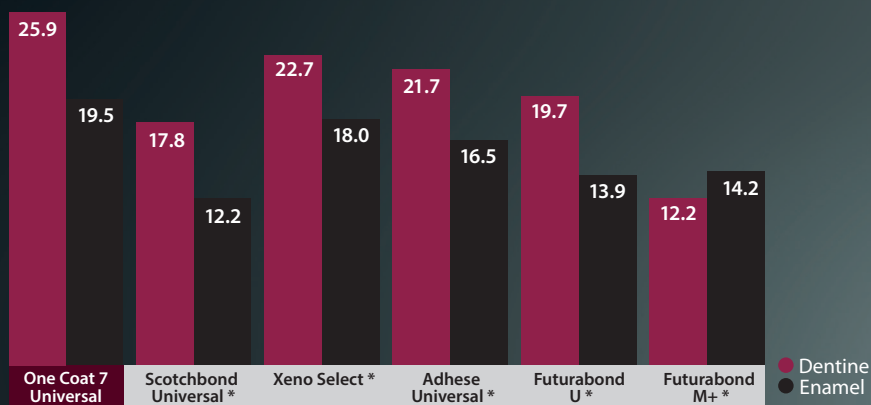


\* Source: internal data

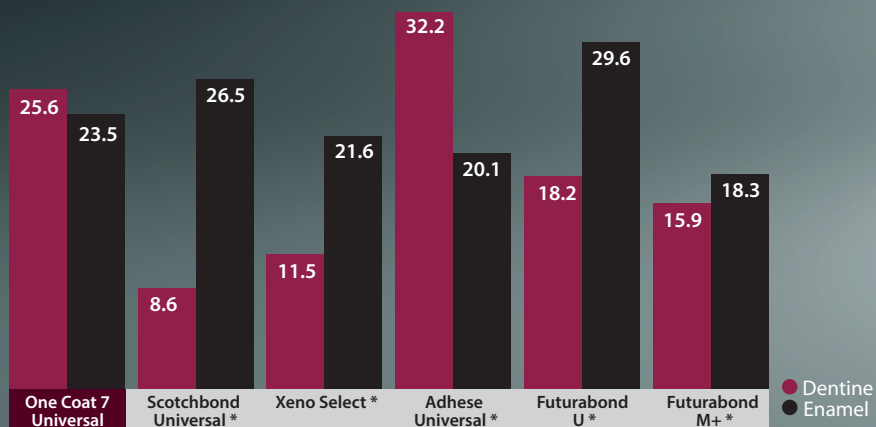
# Technical data

## The test method

The graphs represent the shear bonding strength (SBS/MPa) according to Watanabe. High bonding strengths are indicative of a good substance between bonding agent and tooth material. This is crucial to the success of the dentin restoration.



Comparison of shear bonding strength (SBS/MPa) using the Self-Etch technique



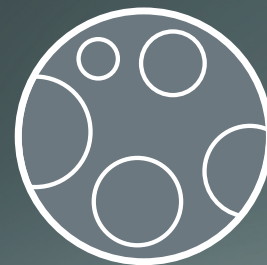
Comparison of shear bonding strength (SBS/MPa) using the Total Etch technique

\* Not registered COLTENE trademarks  
Source: internal data

# Properties

## Antibacterial\*

ONE COAT 7 UNIVERSAL has been shown to offer antibacterial properties in independent lab tests.\*



\*Testing with proliferation test for antimicrobial activity with *S.epidermidis* by QualityLabs, Germany.

## Chemical curing

The special One Coat 7.0 Activator ensures compatibility with chemically curing materials.



\*Methacryloyl-oxydecyl-dihydrogenphosphat

# Order information



**60019538 ONE COAT 7 UNIVERSAL Intro Kit**

- 1 × 5 ml One Coat 7 Universal
- 1 × 2.5 ml Etchant Gel S
- 1 × 20 pcs. Application tips
- 1 × 50 pcs. Brushes black
- 1 × Mixing well
- 1 × Cover for mixing well

**60019539 ONE COAT 7 UNIVERSAL Refill**

- 1 × 5 ml One Coat 7 Universal

**60019540 ONE COAT 7 UNIVERSAL Single Dose**

- 1 × 50 pcs. One Coat 7 Universal Single Dose
- 1 × 50 pcs. Brushes black



**7054 ONE COAT 7.0 Activator Kit**

- 1 × 3 ml One Coat 7.0 Activator
- 1 × 50 pcs. Brushes black



**7373 Etchant Gel S Kit**

- 2 × 2.5 ml Syringe
- 1 × 20 pcs. Application tips

**7634 Brushes black**

- 1 × 50 pcs. Brushes black



**Coltène/Whaledent Inc.**  
 235 Ascot Parkway  
 Cuyahoga Falls, OH 44223 / USA  
 Tel. USA & Canada + 1 800 221 3046  
 + 1 330 916 8800  
 Fax +1 330 645 8704  
 info.us@coltene.com

**Coltène/Whaledent AG**  
 Feldwiesenstrasse 20  
 9450 Altstätten / Switzerland  
 Tel. +41 (0)71 757 53 00  
 Fax +41 (0)71 757 53 01  
 info.ch@coltene.com

**Coltène/Whaledent GmbH + Co. KG**  
 Raiffeisenstrasse 30  
 89129 Langenau / Germany  
 Tel. +49 (0)7345 805 0  
 Fax +49 (0)7345 805 201  
 info.de@coltene.com

coltene.com

