

REINFORCED COMPOSITE BLOC FOR PERMANENT RESTORATION

BRILLIANT Crios

High performance – made brilliant





BRILLIANT Crios

Reinforced composite bloc for permanent restorations

Composite has long been the gold standard in direct filling therapy. With BRILLIANT Crios, the well-proven dental material now enters indirect CAD/CAM restoration technology. Compared to ceramics, CAD/CAM composites for permanent restorations offer considerable advantages.

CLINICAL CASE

Restored teeth

26 with BRILLIANT Crios A2 HT

27 with BRILLIANT Crios A2 LT

Luting

ONE COAT 7 UNIVERSAL

with BRILLIANT EverGlow A2/B2

1. Initial situation



2. Prepare



3. CAD/CAM restoration (27)



4. Sandblasting



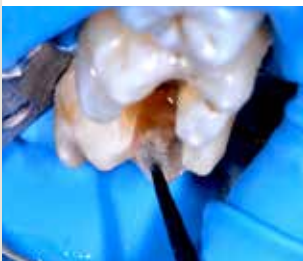
5. Bonding



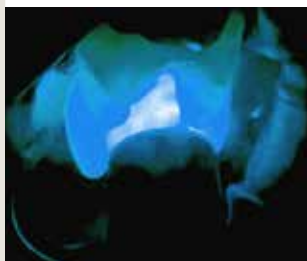
6. Etching



7. Bonding



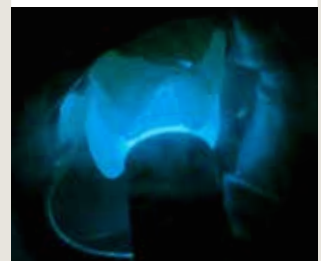
8. Light-curing



9. Luting



10. Light-curing



11. Final result



EFFICIENT HANDLING



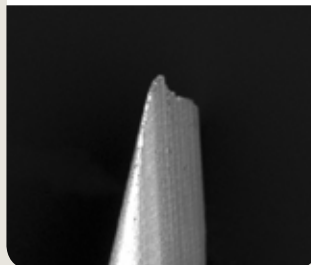
HIGHLY ACCURATE GRINDING PRECISION

BRILLIANT Crios is distinguished by superior precision. Even when ceramic materials have already started chipping, BRILLIANT Crios can still be ground with ease and precision in the case of extremely thin margins. This highly accurate grinding precision offers greater freedom of preparation.

BRILLIANT Crios



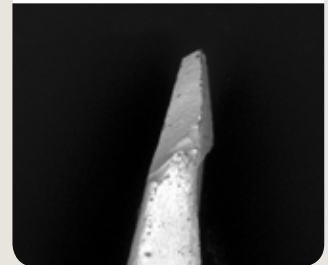
Lava Ultimate*



VITA Enamic*



IPS Empress CAD*



Ground tip 0.1 mm (Sirona inLab MC XL)

Source: C. Kopfmann et al., Eur. J. Prosthodont. Rest. Dent., EMDC Special, P21, 2015, Nuremberg | *Not a trademark of COLTENE

TIME SAVING AND COST EFFICIENT

- Effortless polishing for fast gloss
- No firing process required
- Highly accurate grinding precision
- Can be modified and repaired

Photo: Dr. Paulo Monteiro



BRILLIANT CRIOS FOR PERMANENT AESTHETIC RESTORATIONS

REINFORCED COMPOSITE

- High flexural strength supports permanent restorations
- Shock-absorbing effect reduces stress transmission
- Blends in well to provide natural aesthetics
- Comparable wear resistance to glass-ceramic with less wear on human antagonist

EFFICIENT HANDLING

- No firing process required
- Can be modified and repaired
- Highly accurate grinding precision
- Effortless polishing for fast gloss*

RELIABLE LUTING SYSTEM

- Secure bonding with ONE COAT 7 UNIVERSAL
- Compatible luting materials for all stated indications

SIZES

- 12** 12 × 10 × 15 (mm)
- 14** 14 × 12 × 18 (mm)

SHADES

- Low Translucent (LT)**
Bleach, A1, A2, A3, A3.5, B1, B2, B3, C2
- High Translucent (HT)**
A1, A2, A3, B1

INDICATIONS

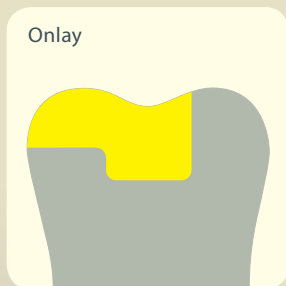
BRILLIANT Crios is the ideal choice for single tooth restorations in the anterior as well as posterior region of teeth. This includes all conventional indications such as **inlays, onlays, crowns and veneers**.



Inlay



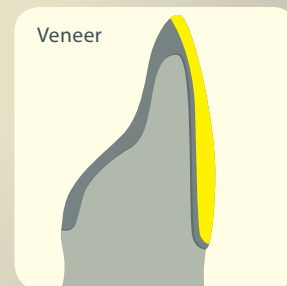
Onlay



Crown



Veneer



*ALPEN ShapeGuard 2-Step Polisher; ALPEN Brush Plus Wide Cup

REINFORCED COMPOSITE

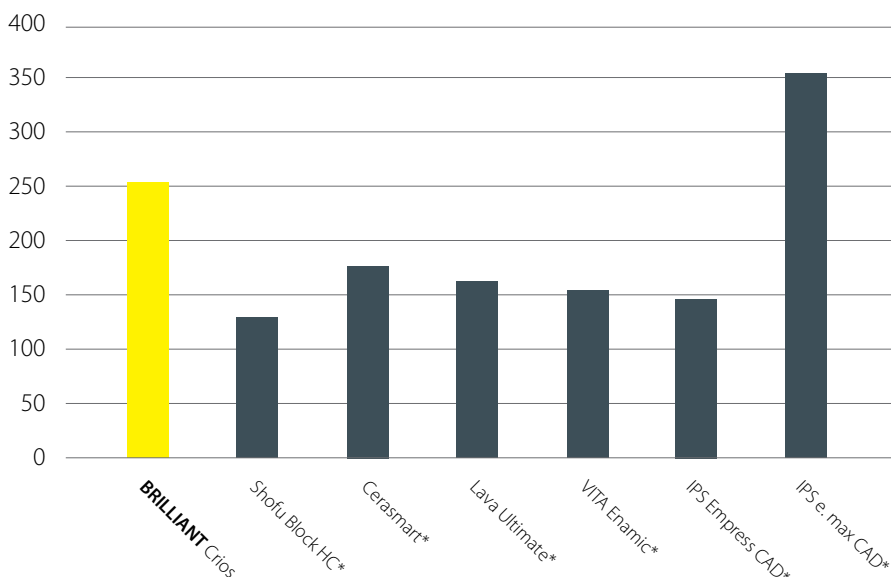
The outstanding mechanical properties of BRILLIANT Crios are the result of controlled, stress-free thermal curing. The multimodal composition of dental glass and amorphous silica in combination with a reinforcing resin matrix make BRILLIANT Crios the ideal material for permanent single-tooth restorations.

A STRONG MATERIAL

The quality of BRILLIANT Crios is also reflected by its high flexural strength. The compact structure increases the material resistance and reduces the risk of fracture.

BIAXIAL FLEXURAL STRENGTH

Measured in MPa



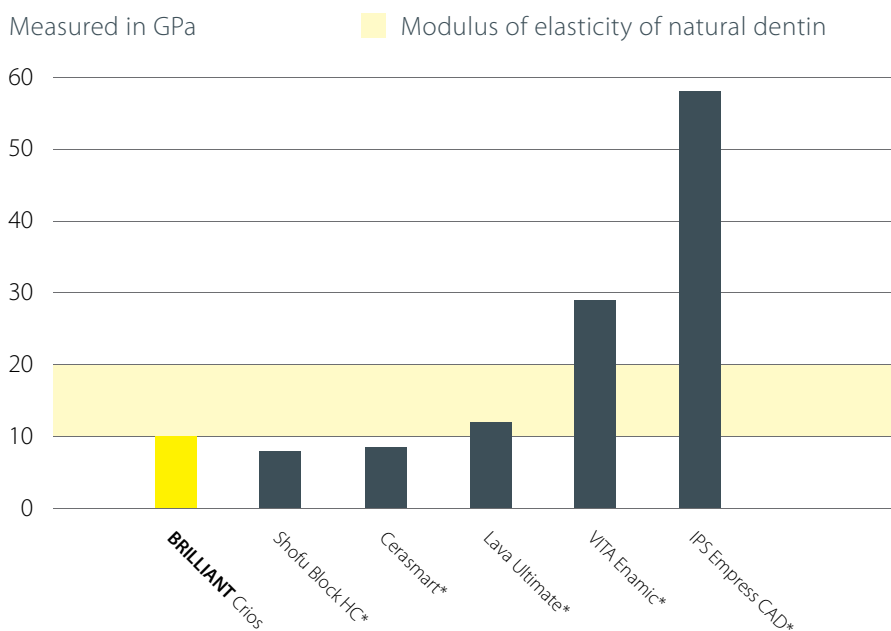
Source: internal data | *Not a trademark of COLTENE

SHOCK-ABSORBING EFFECT

The dentin-like modulus of elasticity of BRILLIANT Crios reduces stress peaks during chewing, resulting in decreased risk of material fatigue. Due to its shock-absorbing effect, it is extremely well suited for implant restorations. As tooth substance and BRILLIANT Crios have a similar modulus of elasticity, loading stress is considerably reduced at the margins.

MODULUS OF ELASTICITY

Measured in GPa

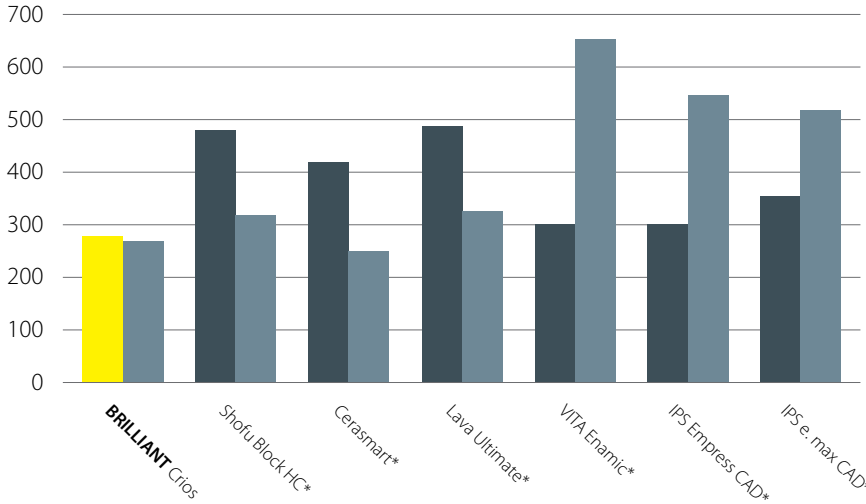


Source: R. Böhner et al., #597, IADR 2015, Antalya, Turkey
*Not a trademark of COLTENE

TWO-BODY WEAR

Measured in μm

■ Wear material ■ Wear antagonist



Source: Stawarczyk et al., J Mech Behav Biomed Mater 55, 1-11 (2015) | *Not a trademark of COLTENE

WEAR RESISTANT AND GENTLE AT THE SAME TIME

Studies confirm the excellent abrasion resistance of BRILLIANT Crios. Nonetheless, the wear-resistant composite material proves to be especially kind to the antagonist teeth in comparison to ceramic restorations. BRILLIANT Crios is suitable as a permanent restoration material – even under considerable chewing forces – and thus offers the best of both worlds.



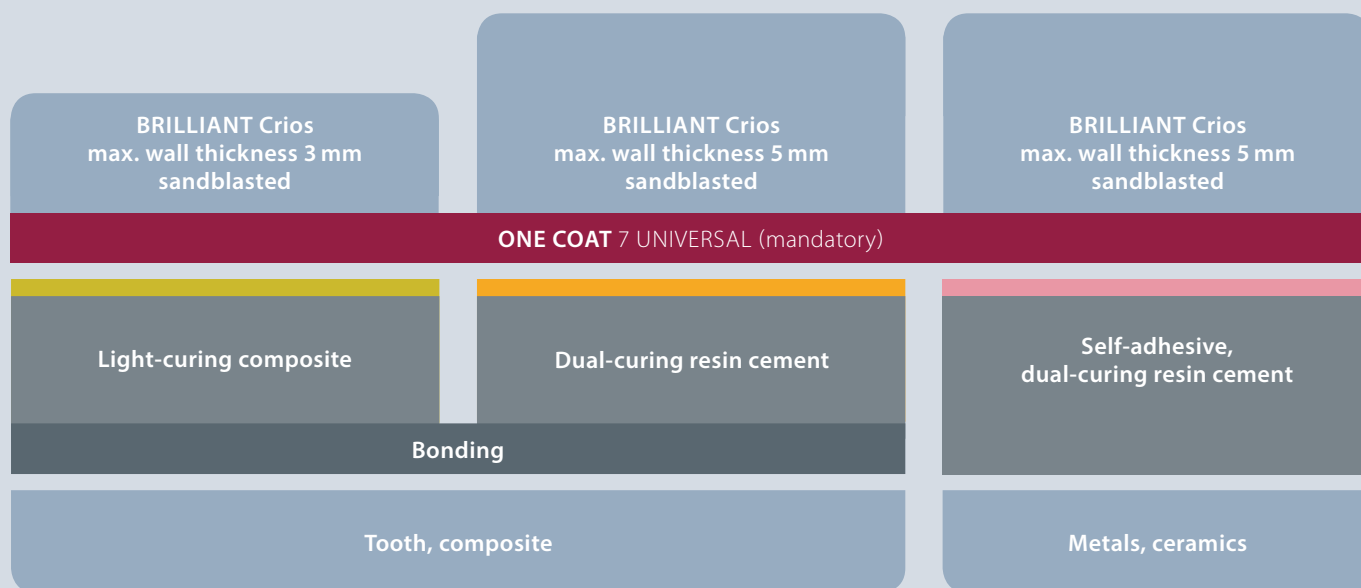
NATURAL AESTHETICS WITH A GLOSSY RESULT

BRILLIANT Crios blends in well and conveys natural aesthetics. A broad spectrum of 13 shades in two translucencies perfectly covers the needs in the anterior as well as posterior region of teeth. Immediately after grinding, BRILLIANT Crios displays an extremely homogeneous surface structure. The restoration can therefore be brought to a high gloss very quickly. Easy repolishing, for example during prophylaxis, is possible at any time if required.

RELIABLE LUTING SYSTEM

As part of its adhesive filling therapy, COLTENE offers a complementary and proven luting system for BRILLIANT Crios. The key component of the luting concept is the universal adhesive ONE COAT 7 UNIVERSAL. The smooth BRILLIANT EverGlow composite or the dual-curing resin

cements DuoCem and SoloCem offer indication-appropriate solutions, depending on the wall thickness of the restoration and the luting substrate, ranging from natural dentin to a metal abutment.



BRILLIANT EverGlow®

Light-curing composite

Ideal as luting material to dentin or composite for thin restoration walls.

Wall thickness ≤ 3 mm

DuoCem®

Dual-curing resin cement

Offers exceptional bonding values to dentin or composite, in particular for greater wall thickness.

Wall thickness ≤ 5 mm

SoloCem®

Self-adhesive,
dual-curing resin cement

Strong bonding to metal or ceramic abutments, without requiring an additional bonding step.

Wall thickness ≤ 5 mm

SECURE BONDING

ONE COAT 7 UNIVERSAL

ONE COAT 7 UNIVERSAL is matched perfectly to the BRILLIANT Crios components, resulting in strong anchorage and a reliable adhesion. This is why ONE COAT 7 UNIVERSAL adhesive is used in conjunction with BRILLIANT Crios.

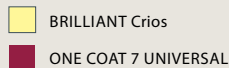
The monomers (red) contained in ONE COAT 7 UNIVERSAL penetrate into the polymerized resin matrix of BRILLIANT Crios.



Polymer chains are formed during polymerization of the monomers and these are anchored in the resin matrix.

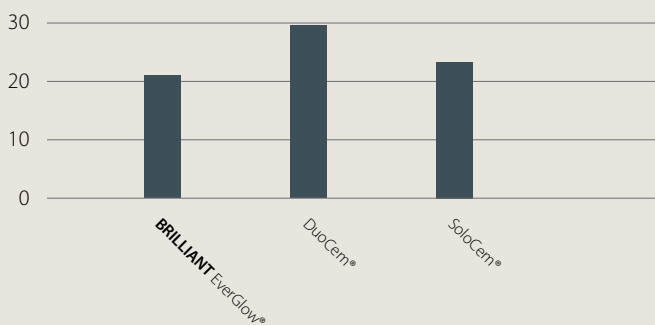


The double bonds contained in the resin matrix form chains during polymerization of the monomers.



SHEAR BOND STRENGTH WITH ONE COAT 7 UNIVERSAL

Measured in MPa



The BRILLIANT EverGlow, DuoCem and SoloCem luting materials demonstrate excellent bonding strengths to give a secure adhesion to BRILLIANT Crios.

Source: internal data



FURTHER PROPERTIES

ONE COAT 7 UNIVERSAL is a light-curing one component universal adhesive.

- Exceptional bonding values on enamel and dentin
- Excellent marginal seal
- Minimized postoperative sensitivity
- For all application techniques (Self-Etch, Selective-Etch, Total-Etch)

*Methacryloyl-oxydecyl-dihydrogenphosphat

ORDER INFORMATION

BRILLIANT Crios

60020095 Intro Kit CEREC 12

Each 1 × A2 LT 12, A3 LT 12, A3.5 LT 12, A2 HT 12, A3 HT 12
5 × 0.1 ml ONE COAT 7 UNIVERSAL Single Dose

60020097 Intro Kit CEREC 14

Each 1 × A2 LT 14, A3 LT 14, A3.5 LT 14, A2 HT 14, A3 HT 14
5 × 0.1 ml ONE COAT 7 UNIVERSAL Single Dose



CEREC/inLab – 5 blocs					
		Low Translucent		High Translucent	
		12	14	12	14
Bleach		60019998 BL LT 12	60019985 BL LT 14		
A1		60019999 A1 LT 12	60019986 A1 LT 14	60020007 A1 HT 12	60019994 A1 HT 14
A2		60020000 A2 LT 12	60019987 A2 LT 14	60020008 A2 HT 12	60019995 A2 HT 14
A3		60020001 A3 LT 12	60019988 A3 LT 14	60020009 A3 HT 12	60019996 A3 HT 14
A3.5		60020002 A3.5 LT 12	60019989 A3.5 LT 14		
B1		60020003 B1 LT 12	60019990 B1 LT 14	60020010 B1 HT 12	60019997 B1 HT 14
B2		60020004 B2 LT 12	60019991 B2 LT 14		
B3		60020005 B3 LT 12	60019992 B3 LT 14		
C2		60020006 C2 LT 12	60019993 C2 LT 14		

ONE COAT 7 UNIVERSAL

60019538 ONE COAT 7 UNIVERSAL Intro Kit

1 × 5 ml ONE COAT 7 UNIVERSAL
1 × 2.5 ml Etchant Gel S
1 × 20 pcs. Application tips
1 × 50 pcs. Brushes black
1 × Mixing well
1 × Cover for mixing well

60019539 ONE COAT 7 UNIVERSAL Refill

1 × 5 ml ONE COAT 7 UNIVERSAL

60019540 ONE COAT 7 UNIVERSAL Single Dose

1 × 50 pcs. ONE COAT 7 UNIVERSAL Single Dose
1 × 50 pcs. Brushes black

7054 ONE COAT 7.0 Activator Kit

1 × 3 ml ONE COAT 7.0 Activator
1 × 50 pcs. Brushes black

DuoCem

Adhesive Dual-Cure Resin Cement

60014382 Refill Dentin

1 × 5 ml DuoCem Dentin
5 x Mixing Tip Short Fine
5 x Mixing Tip Short Super Fine

60014383 Refill White Opaque

1 × 5 ml DuoCem White Opaque
5 x Mixing Tip Short Fine
5 x Mixing Tip Short Super Fine

60020092 Refill Translucent

1 × 5 ml DuoCem Translucent
5 x Mixing Tip Short Fine
5 x Mixing Tip Short Super Fine

SoloCem

Self-Adhesive Dual-Cure Resin Cement

60014062 Refill Dentin

1 × 5 ml SoloCem Dentin
5 x Mixing Tip Brown Short Super Fine
5 x Mixing Tip Brown Short Fine

60014061 Refill White Opaque

1 × 5 ml SoloCem White Opaque
5 x Mixing Tip Brown Short Super Fine
5 x Mixing Tip Brown Short Fine

60019840 Refill Translucent

1 × 5 ml SoloCem Translucent
5 x Mixing Tip Brown Short Super Fine
5 x Mixing Tip Brown Short Fine

BRILLIANT EverGlow Light Cure Resin

Refill Tips (20 x 0.2 g)

60019706	Bleach (BL)	60019709	A3/D3
60019707	A1/B1	60019710	A3.5/B3
60019708	A2/B2	60019716	C2/C3

Coltène/Whaledent Inc.
235 Ascot Parkway
Cuyahoga Falls, Ohio 44223 / USA
T +1 330 916 8800
F +1 330 645 8704
info.us@coltene.com

Coltène/Whaledent AG 
Feldwiesenstrasse 20
9450 Altstätten / Switzerland
Tel. +41 (0)71 757 53 00
Fax +41 (0)71 757 53 01
info.ch@coltene.com

Coltène/Whaledent GmbH + Co. KG
Raiffeisenstrasse 30
89129 Langenau / Germany
Tel. +49 (0)7345 805 0
Fax +49 (0)7345 805 201
info.de@coltene.com