



**DuoTEMP<sup>®</sup>**   
*dual cure temporary filling material*

## **Double security keeps you smiling!**

- Dual-cure
- High marginal integrity
- Easy removal
- One material with multiple indications

 **COLTENE**

DuoTEMP® is a dual-cured, eugenol-free, white temporary filling material formulated from zinc oxide/zinc sulphate for optimal protection from the infiltration of bacteria. DuoTEMP is one of the first all-in-one temporary filling materials that can be cured using both light and saliva. This solution delivers greater flexibility, allowing the patient to immediately resume normal daily activities. DuoTEMP also contains a pleasant flavor that keeps the dentist and patient smiling.

► **Double security**

- **Dual-cure**  
After only 40 s of light curing, the patient can immediately load the material. Afterwards, DuoTemp will continue to completely self-cure on its own with saliva.
- High marginal seal due to slight expansion  
Reduces infiltration of bacteria

► **One material with multiple indications**

- Reduces inventory and minimizes confusion
- Temporary fillings of class I and II cavities
  - Temporary fillings for endodontic applications
  - Temporary fillings for inlay / onlay preparations

► **Natural tooth-like feeling**

DuoTEMP's high surface hardness feels like a natural tooth to minimize irritation and maximize patient comfort.

► **Additional benefits**

- Contains zinc oxide and fluoride for additional protection
- Eugenol-free – no effect on the curing of composites
- Radiopaque

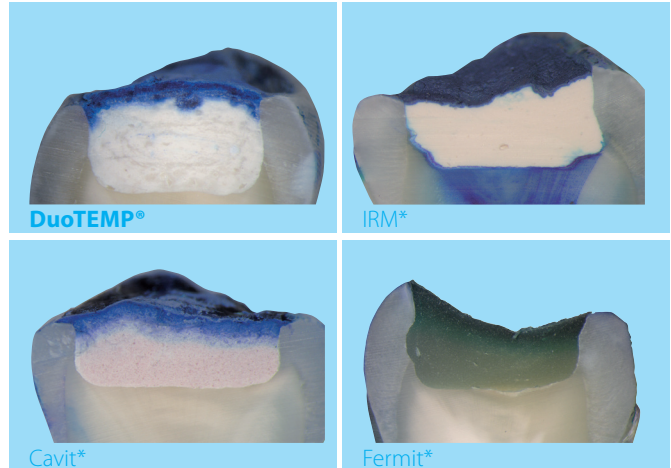
**Order Information:**

**5831** DuoTEMP Single Pack  
1 syringe of 5 g

**7090** DuoTEMP Eco Pack  
5 syringes of 5 g

**7235** Intraoral Separator, 5ml

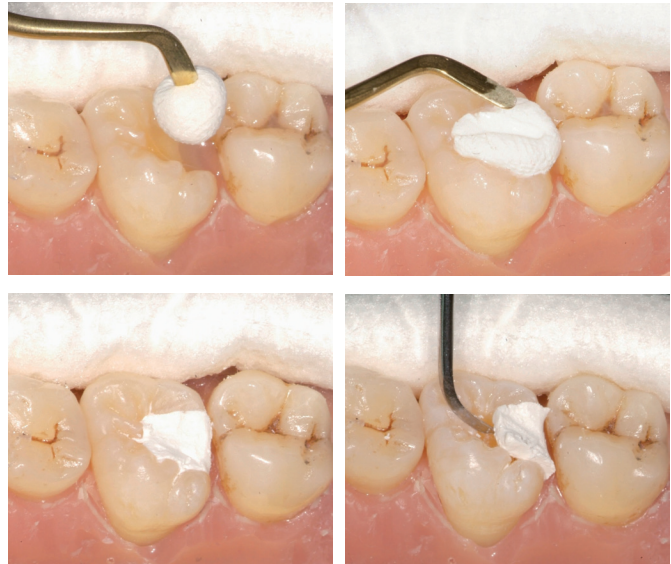
► **Marginal Seal Comparison**



Cross-sectioned extracted human molars were filled with cured DuoTEMP and then immersed in methylene blue dye to determine the marginal sealing properties. DuoTEMP demonstrated excellent sealing properties.  
Source: internal data

\* Not a trademark of Coltène/Whaledent

► **Easy, time saving application**



One component without mixing. Good retention in the cavity. Easy removal.

**Coltène/Whaledent Inc.**  
235 Ascot Parkway  
Cuyahoga Falls, OH 44223 / USA  
Tel. USA & Canada + 1 800 221 3046  
+ 1 330 916 8800  
Fax +1 330 645 8704  
info.us@coltene.com

**Coltène/Whaledent AG**   
Feldwiesenstrasse 20  
9450 Altstätten / Switzerland  
Tel. +41 (0)71 757 53 00  
Fax +41 (0)71 757 53 01  
info.ch@coltene.com

**Coltène/Whaledent GmbH + Co. KG**  
Raiffeisenstrasse 30  
89129 Langenau / Germany  
Tel. +49 (0)7345 805 0  
Fax +49 (0)7345 805 201  
info.de@coltene.com

coltene.com  
**COLTENE**