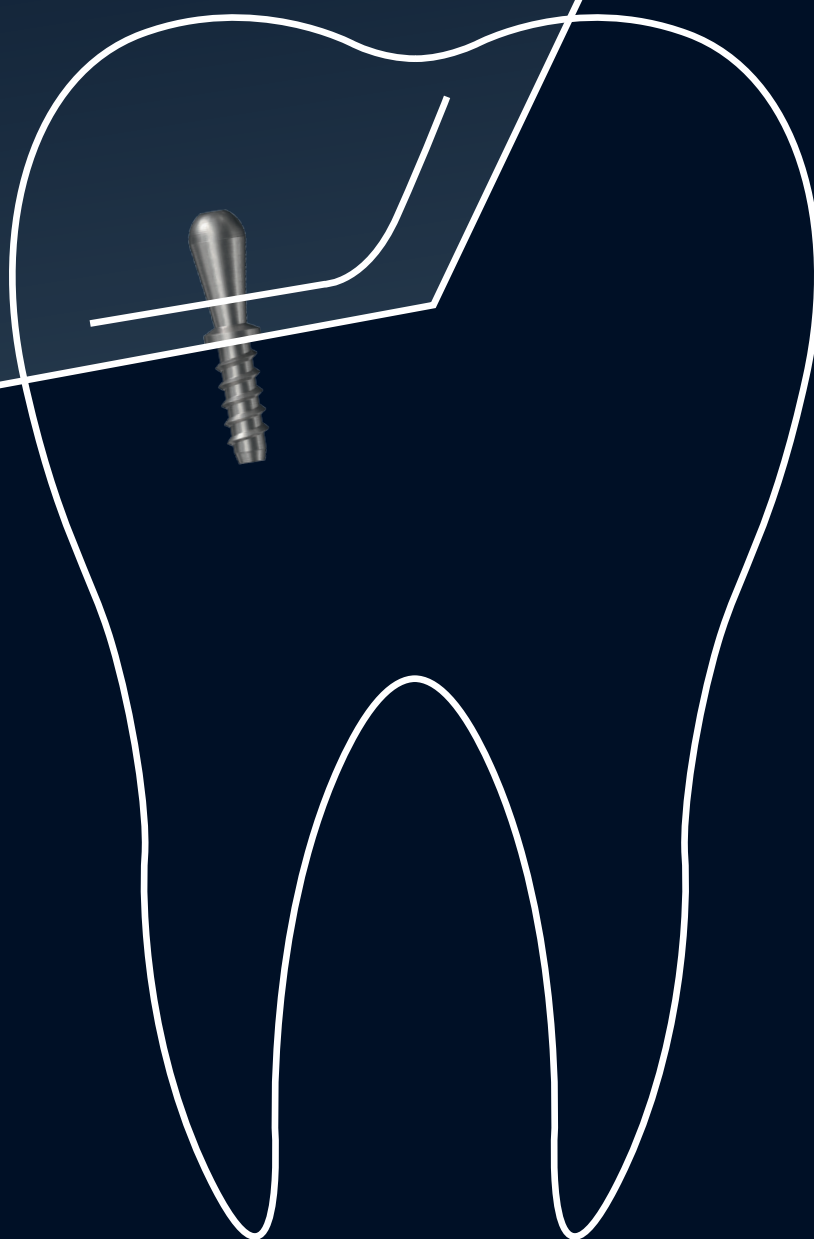


Restoration

# Parapulpal retention pins

For permanent retention in the most demanding indications



# Sometimes mechanical retention is key

COLTENE can look back on decades of experience in the parapulpal pin segment and millions of satisfied customers. Brands like the well known TMS® or MAX® Pin facilitate daily work in practices and deliver reliable results even in highly demanding cases. As a leading manufacturer, COLTENE strives for excellent material quality and offers a broad range of parapulpal pins. COLTENE offers different types of self-threading pins to cover a wide indication spectrum and are a good choice in order to deliver satisfying results for your clients.

## Overview

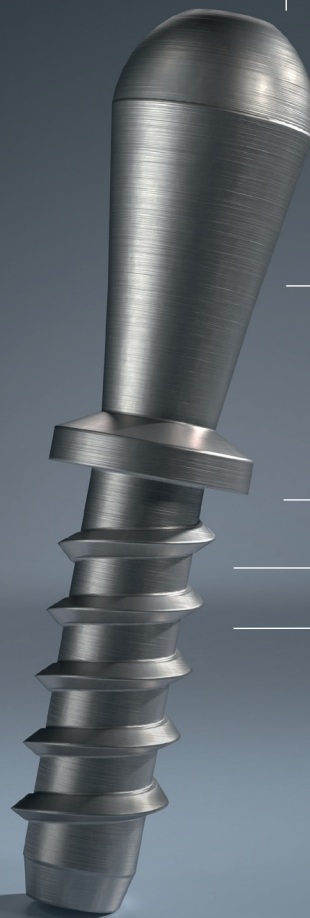


RESTORATION and CORE BUILD UPS			
Class I		x	x
Class II	x	x	x
Class III		x	x
Class IV	x	x	x
ALLOYS			
Alpha Beta Titanium	x	x	x
Gold-Plated Stainless Steel		x	x
CHARACTERISTICS			
Self-shearing	x	x	x
Shoulder stop	x	x	
Smooth self-alignment	x	x	x
Rounded head	x		
Tapered pin end	x	x	x
Available 2-in-1		x	x

# MAX<sup>®</sup> Pin

Optimum Retention.  
Superior Safety.

MAX Pins are designed for use with different restorative materials – composite, amalgam or glass ionomer: In large class II and class IV restorations, for additional retention and support for cuspal/incisal edges. MAX Pins can be used confidently for a stronger bond between restorative material and dentin.



## 1 Round head

No sharp edges to cause stress points in restorative material

## 2 Undercut shape of the head

Material "locks on" just like undercut cavity preparation design  
Easy adaptation of restorative material

## 3 Broad shoulder stop

Perfect seating of the pin  
No apical stress, eliminates the risk of "bottoming out"

## 4 Inverted buttress thread design

More thread surface against dentin for more retention  
Clearly forms thread path for lower insertion stress than conventional threads

## 5 Wider pitch threads

Greater mass of dentin between threads for more retention  
Less dentin displaced for safer placement

## 6 Tapered pin end

Easier insertion, pin aligns automatically

### Two sizes to meet any need:

MAX 017 (.017" / .425 mm)  
for space-limited indications  
where head length is critical  
MAX 021 (.021" / .525 mm)  
for general use



**Contra-angle or hand placement:**  
the choice is yours



**Reduced risk of cross-contamination**  
due to sanitary blister packaging



**Color coded packaging**  
for easier product identification



# TMS<sup>®</sup> – The family

It's the details that make the difference

TMS pins are easy to use, self-threading retention pins that provide a reliable link between restorative filling material and dentin. While the original TMS<sup>®</sup> pins were conceived for manual insertion, TMS LINK<sup>®</sup> and TMS LINK PLUS<sup>®</sup> pins can also be mechanically installed. The well thought out construction of TMS LINK<sup>®</sup> and TMS LINK PLUS<sup>®</sup> is the result of decades of experience and an uncompromising effort to meet your restorative needs.



## EVOLUTION



TMS<sup>®</sup>



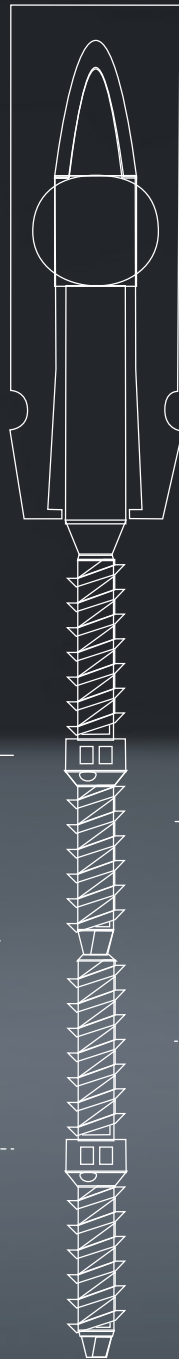
TMS LINK<sup>®</sup> Series



TMS LINK PLUS<sup>®</sup>

### SIZE

.0135" / 0.350 mm	x	x	
.017" / 0.425 mm	x	x	
.021" / 0.525 mm	x	x	x
.027" / 0.675 mm	x	x	x



**1** Ball joint link to shank

Smooth self-alignment of the pin during insertion and consistent shearing

**2** Shoulder stop

Stops the pin coronally, reducing apical stress

**4** Defined shear points

Convenient and time-saving pin placement

**3** Wide buttress thread design

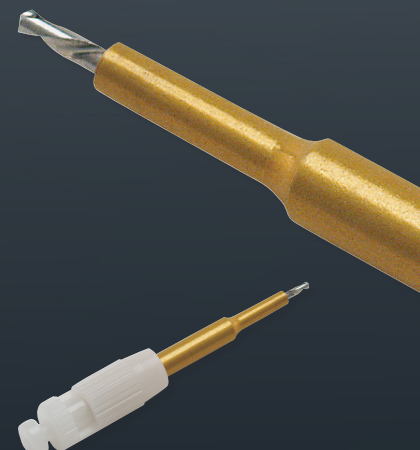
Smooth insertion together with optimum retention

**5** Tapered pin end

Leads pin into channel for easy insertion

# KODEX® Drills

KODEX® Drills					
COLOR		I	II	III	IV
Minuta (Pink)				x	x
Minikin (Red)		x	x	x	x
Minim (Silver)		x	x	x	x
Regular (Gold)		x	x		



# Order information

## MAX® Pin

Self-threading parapulpal retention pins with shoulder stop and rounded head design for good adaptation. Corrosion-free, titanium alloy. Self-alignment during placement.

Material	Color code	Ø	Pin Design	Sales Unit	Self-shearing	REF	Content
Titanium Alloy	Blue	.017" 0.425 mm	Single	Complete Kit	Yes	<b>M11</b>	20 Pins, 2 MAX® Drills, 1 Hand Driver
				Bulk Kit	Yes	<b>M13</b>	50 Pins
	Purple	.021" 0.525 mm	Single	Complete Kit	Yes	<b>M21</b>	20 Pins, 2 MAX® Drills, 1 Hand Driver
				Bulk Kit	Yes	<b>M23</b>	50 Pins

## MAX® Pin Accessories

REF	
<b>M91</b>	Drills Blue, Depth-Limiting, 5 pcs
<b>M92</b>	Drills Purple, Depth-Limiting, 5 pcs

## TMS LINK PLUS®

TMS LINK PLUS® pins offer smooth self-alignment, tapered pin end, shoulder stop and automatic shear-points. They are available as single pins or as a convenient 2-in-1 pin system for time saving placement. The pins can be mechanically installed.

Material	Color code	Ø	Pin Design	Sales Unit	Self-shearing	REF	Content
Titanium Alloy	Minim Silver	.021" 0.525 mm	Single	Complete Kit	Yes	<b>L821</b>	20 Pins, 1 KODEX Drill K92, 1 Hand Driver
				Bulk Kit	Yes	<b>L822</b>	50 Pins
			2-in-1	Complete Kit	Yes	<b>L841</b>	20 Pins, 2 KODEX Drills K92, 1 Hand Driver
				Bulk Kit	Yes	<b>L842</b>	50 Pins
Gold-Plated Stainless Steel	Minim Silver	.021" 0.525 mm	Single	Complete Kit	Yes	<b>L721</b>	20 Pins, 1 KODEX Drill K92, 1 Hand Driver
				Bulk Kit	Yes	<b>L722</b>	50 Pins
			2-in-1	Complete Kit	Yes	<b>L731</b>	20 Pins, 2 KODEX Drills K92, 1 Hand Driver
				Bulk Kit	Yes	<b>L732</b>	50 Pins
	Regular Gold	.027" 0.675 mm	Single	Complete Kit	Yes	<b>L741</b>	20 Pins, 1 KODEX Drill K96, 1 Hand Driver
				Bulk Kit	Yes	<b>L742</b>	50 Pins
			2-in-1	Complete Kit	Yes	<b>L751</b>	20 Pins, 2 KODEX Drills K96, 1 Hand Driver
				Bulk Kit	Yes	<b>L752</b>	50 Pins

## TMS LINK® Series

The second generation TMS® pins can be mechanically installed and offer a ball joint link to the shank for smooth self-alignment as well as a tapered pin end for easier insertion. The TMS LINK pin is available as a single pin or as a convenient 2-in-1 system.

Material	Color code	Ø	Pin Design	Sales Unit	Self-shearing	REF	Content
Titanium Alloy	Minikin Red	.017" 0.425 mm	Single	Complete Kit	Yes	<b>L811</b>	20 Pins, 1 KODEX Drill K91, 1 Hand Driver
				Bulk Kit	Yes	<b>L812</b>	50 Pins
Gold-Plated Stainless Steel	Minuta Pink	.0135" 0.350 mm	Single	Complete Kit	Yes	<b>L501</b>	20 Pins, 1 KODEX Drill K89, 1 Hand Driver
				Bulk Kit	Yes	<b>L502</b>	50 Pins
	Minikin Red	.017" 0.425 mm	Single	Complete Kit	Yes	<b>L511</b>	20 Pins, 1 KODEX Drill K91, 1 Hand Driver
				Bulk Kit	Yes	<b>L512</b>	50 Pins
	Minim Silver	.021" 0.525 mm	Single	Complete Kit	Yes	<b>L521</b>	20 Pins, 1 KODEX Drill K92, 1 Hand Driver
				Bulk Kit	Yes	<b>L522</b>	50 Pins
			2-in-1	Complete Kit	Yes	<b>L531</b>	20 Pins, 2 KODEX Drills K92, 1 Hand Driver
				Bulk Kit	Yes	<b>L532</b>	50 Pins
	Regular Gold	.027" 0.675 mm	Single	Complete Kit	Yes	<b>L541</b>	20 Pins, 1 KODEX Drill K96, 1 Hand Driver
				Bulk Kit	Yes	<b>L542</b>	50 Pins
			2-in-1	Complete Kit	Yes	<b>L551</b>	20 Pins, 2 KODEX Drills K96, 1 Hand Driver
				Bulk Kit	Yes	<b>L552</b>	50 Pins

## TMS®

The first generation of TMS® was conceived for manual insertion and is available as a single pin or as a convenient 2-in-1 system.

Material	Color code	Ø	Pin Design	Sales Unit	Self-shearing	REF	Content
Gold-Plated Stainless Steel	Minuta Pink	.0135" 0.350 mm	Single	Complete Kit	Yes	<b>T111</b>	20 Pins, 1 KODEX Drill K89, 1 Hand Wrench
				Bulk Kit	Yes	<b>T112</b>	50 Pins
	Minikin Red	.017" 0.425 mm	Single	Complete Kit	Yes	<b>T107</b>	20 Pins, 1 KODEX Drill K91, 1 Hand Wrench
				Bulk Kit	Yes	<b>T108</b>	50 Pins
				Bulk Kit	Yes	<b>T109</b>	100 Pins
	Minim Silver	.021" 0.525 mm	Single	Complete Kit	No	<b>T04</b>	20 Pins, 1 KODEX Drill K93, 1 Hand Wrench
				Refill	No	<b>T05</b>	50 Pins
				Bulk Kit	No	<b>T06</b>	100 Pins
			2-in-1	Complete Kit	Yes	<b>T10</b>	20 Pins, 1 KODEX Drill K92, 1 Hand Wrench
				Refill	Yes	<b>T11</b>	50 Pins
				Bulk Kit	Yes	<b>T12</b>	100 Pins
	Regular Gold	.027" 0.675 mm	Single	Complete Kit	Yes	<b>T13</b>	20 Pins, 1 KODEX Drill K97, 1 Hand Wrench
					No	<b>T01</b>	20 Pins, 1 KODEX Drill K97, 1 Hand Wrench
				Refill	No	<b>T02</b>	50 Pins
					Yes	<b>T14</b>	50 Pins
				Bulk Kit	No	<b>T03</b>	100 Pins
					Yes	<b>T15</b>	100 Pins
			2-in-1	Complete Kit	Yes	<b>T07</b>	20 Pins, 1 KODEX Drill K96, 1 Hand Wrench
Refill				Yes	<b>T08</b>	50 Pins	
Bulk Kit				Yes	<b>T09</b>	100 Pins	

# Order information

## KODEX® Drills

KODEX® Drills complete the TMS®, TMS LINK® and TMS LINK PLUS® retention pin systems. Color coding helps to select the appropriate size, ensuring optimal preparation of the canal.


Color code	Ø	Drill length	Depth-limiting	Shank length	REF	Content
Minuta Pink	.0135" 0.350 mm	.051"/1.3 mm	Yes	Long	<b>K89</b>	6 pcs
Minikin Red	.017" 0.425 mm	.059"/1.5 mm	Yes	Short	<b>K90</b>	6 pcs
		.059"/1.5 mm	Yes	Long	<b>K91</b>	6 pcs
Minim Silver	.021" 0.525 mm	.079"/2.0 mm	Yes	Regular	<b>K92</b>	6 pcs
		.157"/4.0 mm	No	Regular	<b>K93</b>	6 pcs
Regular Gold	.027" 0.675 mm	.079"/2.0 mm	Yes	Regular	<b>K96</b>	6 pcs
		.197"/5.0 mm	No	Regular	<b>K97</b>	6 pcs

## Accessories Parapulpal Pins

REF	Item
B5910	Hand Wrench, Minuta Pink, 1 pcs
B593	Hand Wrench, Regular Gold & Minikin Red, 1 pcs
B595	Hand Wrench, Minim Silver, 1 pcs
B61M	Bending Tool, Minim Silver
B61R	Bending Tool, Regular Gold
L590	Universal Hand Driver

**Coltene/Whaledent Inc.**   
 235 Ascot Parkway  
 Cuyahoga Falls, OH 44223 / USA  
 T USA & Canada +1 800 221 3046  
 +1 330 916 8800  
 F +1 330 645 8704  
 info.us@coltene.com

**Coltene/Whaledent AG**  
**Feldwiesenstrasse 20**  
 9450 Alstatten / Switzerland  
 T +41 (0) 71 757 53 00  
 F +41 (0) 71 757 53 01  
 info.ch@coltene.com

**Coltene/Whaledent GmbH + Co. KG**   
 Raiffeisenstrasse 30  
 89129 Langenau / Germany  
 T +49 (0) 7345 805 0  
 F +49 (0) 7345 805 201  
 info.de@coltene.com

 **COLTENE**