



COLTENE

Dental Preservation



Endodontics

Page 2



Restoration

Page 20

From the root to the crown

COLTENE is a globally operating group of companies in the development, manufacturing and distribution of dental consumables and small equipment in the fields of infection control, tooth preservation and treatment efficiency.

Tooth preservation from the root to the crown

Sustainable tooth preservation has always played a central role for COLTENE and forms the second product cornerstone. A well-rounded portfolio of restorative and endodontic systems for the preservation of vital and non-vital tooth substance includes first-class adhesives, composites and accessories, as well as outstanding root canal instruments, irrigation solutions and root canal filling materials.



ENDODONTIE

HySolate Dental Dam Kits

Complete Kit with Winged Clamps

H02778

- 36 × Dental Dam, medium, green, 6" × 6" (152 × 152 mm)
- 1 × Plastic frame, 6" (152 mm)
- 1 × Fiesta colour-coded winged clamp set, 9 pcs.
- 1 × Template, 6"
- 1 × Latex Wedjets, thin, yellow
- 1 × Dental Dam Punch
- 1 × Dental Dam Forceps



Simple Dam Kit with Elasti-Dam

H02900

- 36 × Elasti-Dam, medium, green, 6" × 6" (152 × 152 mm)
- 1 × Plastic frame, 6" (152 mm)
- 1 × Fiesta wingless colour-coded clamps
- 1 × Latex Wedjets, thin, yellow
- 1 × Dental Dam Punch
- 1 × Dental Dam Forceps

HySolate Dental Dam



HySolate Fiesta Dental Dam (latex)

- 60034436 36 sheets Medium, assorted colours, 152 × 152 mm
- 60034419 36 sheets Medium, green, 152 × 152 mm
- 60034442 36 sheets Medium, blue, 152 × 152 mm

HYGENIC Dental Dam non latex

- H09105 15 sheets green, 152 × 152 mm



ROEKO Flexi Dam non latex



- 390035 30 sheets violet, 150 × 150 mm
- 390033 30 sheets blue, 150 × 150 mm



CanalPro

Apex Locator Compact

- ▶ Precise measuring accuracy in dry and wet canals
- ▶ LCD panel for optimal display
- ▶ Integrated self-check for fast function control



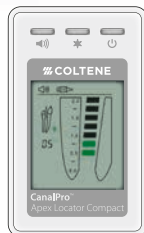
CanalPro Apex Locator Compact Complete Set EU

60019095

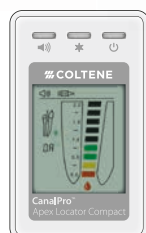
- 1 × Apex Locator Compact
- 1 × Station
- 2 × Lithium coin cell batteries CR2032
- 1 × Measuring cable
- 2 × Lip clips
- 2 × File clips
- 1 × Touch probe
- 1 × Screw driver



File tracking



Large apical zone



Over-instrumentation

MicroMega Dual Pex

Electronic Apex Locator

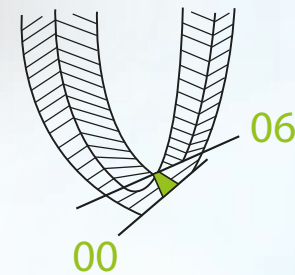
- ▶ User-friendly display
- ▶ Precise localisation of the file position even in dry or wet root canals due to multi-frequency locator technology
- ▶ Stable output voltage independent of the battery charge level
- ▶ Visual and acoustic signals in real-time
- ▶ Automatic switch-off to extend the operating time of the battery
- ▶ Plug & Play Self-check



Dual Pex Apex Locator Kit

51300050

- 1 × Dual Pex Apex Locator
- 2 × Lip clips
- 1 × Tester
- 2 × File clips
- 1 × Measuring cable
- 1 × Power supply with adapter





MicroMega Dual Move

Cordless endo motor

- ▶ Ultra-light and perfectly balanced handpiece
- ▶ Miniature head; 340° rotatable contra-angle
- ▶ Maximum visibility of the working area, suitable for right- and left-handed users
- ▶ 6 programmable memory locations with setting of speed, direction of rotation and maximum torque
- ▶ All NiTi files, continuous rotation and reciprocal movement

The perfect duo with the Apex Locator
Dual Pex



Dual Move Motor Kit

52002004 Continuous rotation and reciprocal movement

- 1 x Handpiece
- 1 x Contra-angle
- 1 x Handpiece holder
- 1 x Data transfer cable
- 1 x Charger
- 1 x Spray head
- 1 x Silicone sleeve

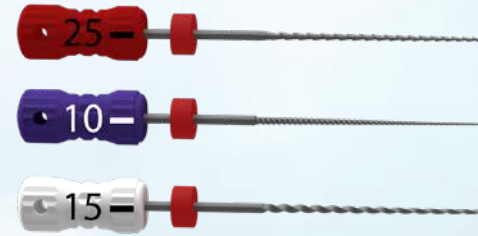


MicroMega HandFiles

NEW

Sterile stainless steel hand files

- ▶ K-Files, K-Reamers, H-Files
- ▶ Blister with 6 pre-sterilised instruments
- ▶ Reprocessable files
- ▶ Available in 21 mm, 25 mm and 31 mm lengths
- ▶ Sizes from 006 to 140
- ▶ 2% taper
- ▶ Good file grip for easily and efficiently negotiating calcified and curved canals



Further information is available from your COLTENE area sales manager or at micromega.coltene.com



CanalPro Jeni

NEW

Digital assistance system for canal preparation

Autonomous "navigation" in the endo canal owing to revolutionary software

- ▶ Digital assistance system for canal preparation controls the file movement at millisecond intervals
- ▶ Movement profile of the file continuously adapts to the individual root canal anatomy
- ▶ Irrigation recommendation is indicated by an acoustic signal
- ▶ Due to the integrated Apex Locator and fully insulated contra angle, continuous measurement of the working length is possible in real time

Jeni – ready – go!



Free webinar series on the CanalPro
Jeni: <https://bit.ly/2U0vA3B>

**CanalPro Jeni, complete set**

60023659

- 1 × Control unit
- 1 × Motor with apex measuring contact
- 1 × Fully insulated contra-angle, 1:1
- 1 × Bluetooth foot switch
- 1 × Power supply
- 1 × Apex cable set
- 1 × Holding bracket for apex cable

Contra-angle 1:1

60023661

Bluetooth foot switch

60024087

Apex cable set

60023788

- 1 × Measuring cable
- 1 × Lip clip
- 1 × Cap
- 1 × Clamp cable
- 1 × File clamp

CanalPro Jeni, set without contra-angle

60024188

- 1 × Control unit
- 1 × Motor with apex measuring contact
- 1 × Bluetooth foot switch
- 1 × Power supply
- 1 × Apex cable set
- 1 × Holding bracket for apex cable



"It was only yesterday that I treated a second molar. It's truly amazing what I can do with the help of the algorithm".

Prosthetic expert Dr Nicolas Gutierrez, Spain



HyFlex EDM

Your file system for initial preparation
(straight and curved canals)

- ▶ High flexibility and fracture resistance due to special manufacturing process
- ▶ Centred canal preparation
- ▶ One system for all cases (straight to highly curved canals)
- ▶ Multiple usability through regeneration after thermal treatment



Files for complex canal anatomies

	25/.12 Orifice Opener	Hand File	10/.05 Glidepath file	25/~ HyFlex OneFile		15/.03 Glidepath file	20/.05 Preparation file
							
	Refill, 3 pcs. 400 rpm and 2.5 N.cm		Refill, 3 pcs. 300 rpm and 1.8 N.cm	Refill, 3 pcs. 400 rpm and 2.5 N.cm		Refill, 3 pcs. 300 rpm and 1.8 N.cm	Refill, 3 pcs. 400 rpm and 2.5 N.cm
21 mm	–	Hand file of choice	60022269	60022270		60023493	60022275
25 mm	–		60019594	60019595		60023492	60022276
15 mm	60019596		–	–		–	–

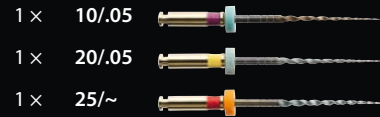
Shaping Set Simple

- 60022267 21 mm
- 60019363 25 mm



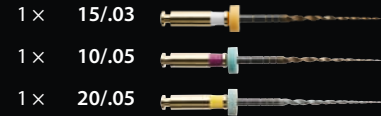
Shaping Set Medium

- 60022277 21 mm
- 60022278 25 mm



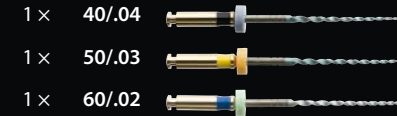
Shaping Set Max Curve

- 60023494 21 mm
- 60023495 25 mm



Finishing Set

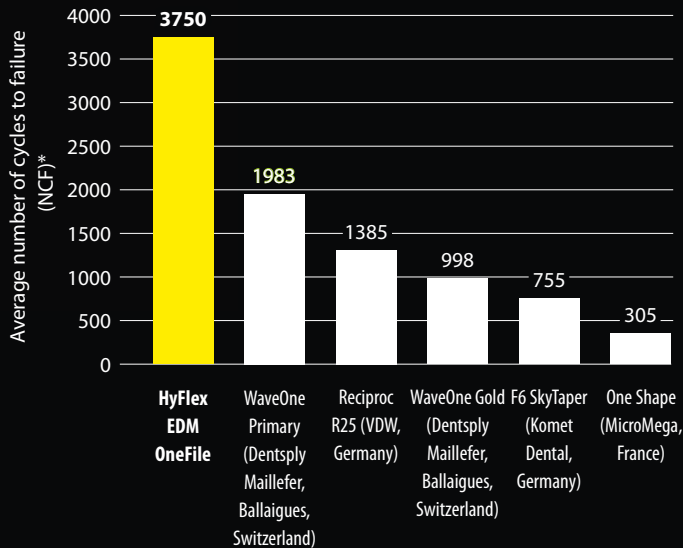
- 60022268 21 mm
- 60019364 25 mm



Refill, 3 pcs.

	21 mm	25 mm
40/.04	60022271	60019597
50/.03	60022272	60019598
60/.02	60022274	60019599

Clinical study



Number of cycles to failure

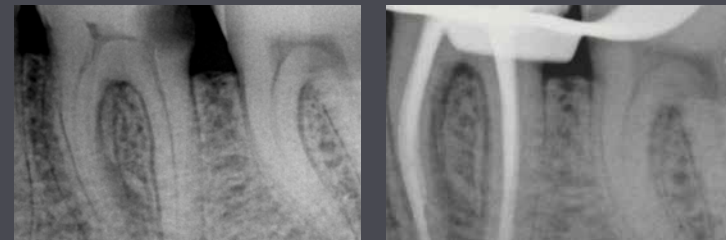
Study by Prof. Eugenio Pedullà, University Catania, Italy^{1, 2}

* The Number to Cycles to Failure (NCF) was calculated by multiplying the time to failure and the speed (RPM) used.

¹ Pedullà E et al. Influence of proper or reciprocating optimum torque reverse kinematics on cyclic fatigue of four single files. J Investig Clin Dent. 2019 Aug;10(3):e12409.

² Pedullà E et al. Influence of Continuous or Reciprocating Optimum Torque Reverse Motion on Cyclic Fatigue Resistance of Two Single-File Nickel-Titanium Rotary Instruments. Eur Endod J. 2017 Aug 22;2(1):1-6.

Clinical Cases



"I'm very happy to inform you that I have tried the HyFlex EDM to shaping some molars in vitro and in vivo (on patients) and I'm sure – it is incredible!"
Prof. Dr Eugenio Pedullà



Did you know that ...

- ▶ we also offer the HyFlex EDM 15/.03 glidepath file and the 20/.05 preparation file for complex canal anatomies?
 - ▶ we also include hand files in our range?
- Simply contact us!



HyFlex CM

Your file system for initial preparation
(curved canals)

500 rpm, up to 2.5 N.cm	25/.08 HyFlex CM	Hand files	20/.04 HyFlex CM	25/.04 HyFlex CM	20/.06 HyFlex CM	30/.04 HyFlex CM	40/.04 HyFlex CM
25 mm* Refill, 6 pcs.	60011048 (19 mm)	Choice of hand files	60011066	60011067	60011074	60011068	60011070

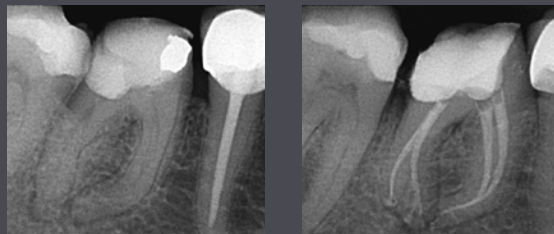
HyFlex CM sequence

60011079 25 mm*

- 1 x 25/.08 (19 mm)
- 1 x 20/.04
- 1 x 25/.04
- 1 x 20/.06
- 1 x 30/.04
- 1 x 40/.04

*The files are also available in 21 mm and 31 mm.

Clinical Cases



"These files definitely know their way around curves.
That's for sure. I love them!"

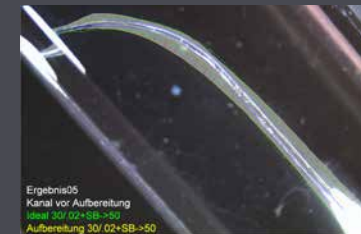
Dr Antonis Chaniotis

Study: Centred canal preparation with HyFlex CM



Ergebnis05
Kanal vor Aufbereitung
Steil: MTwo/40/04
Aufbereitung MTwo 40/04

Preparation with conventional
NiTi instruments



Ergebnis05
Kanal vor Aufbereitung
Steil: 30/02+SB->50
Aufbereitung 30/02+SB->50

Preparation with stainless steel
hand instruments



Ergebnis05
Kanal vor Aufbereitung
Steil: HyFlex 40/04
Aufbereitung HyFlex 40/04

Preparation with HyFlex CM

Reference: University of Würzburg, Dr Norbert Hofmann, 2012, courtesy © N. Hofmann, all rights reserved

HyFlex Remover

NEW

Your file system for revision

- ▶ A single file to remove obturation materials from the root canal*
- ▶ Respects the root canal anatomy**
- ▶ Effective without any solvent**
- ▶ Safe thanks to non-cutting tip



HyFlex Remover

60023649 19 mm
60023648 23 mm

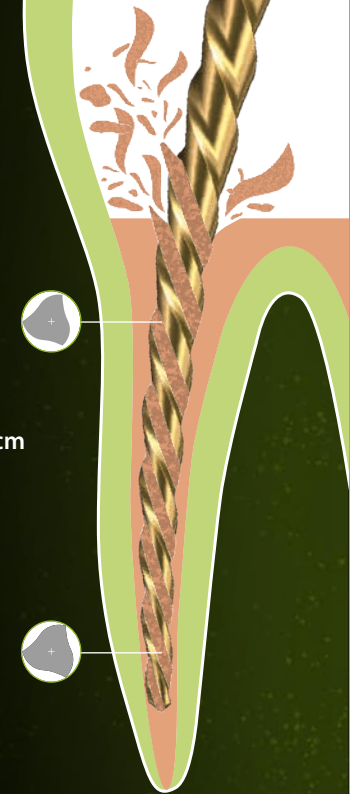
5 × 30/.07 Remover file



30/.07

Maximum torque: 2.5 N.cm

Speed: 400 – 800 rpm



PREPARATION



Did you know that ...

- ▶ you can expand your file system with just one additional file and thus have a complete retreatment system at your disposal?

* Certified for gutta percha

** MicroMega data "Validation report of Remover: Pr Franck Diemer, ICRE. Evaluation du One Flare en désobturation. Evaluation d'un instrument de désobturation: le Remover." 2019.10



MicroMega

One RECI

NEW

Single file in reciprocal motion

- ▶ **Cutting performance:** patented asymmetrical cross-section
- ▶ **Safety:** resistance to fatigue
- ▶ **Flexibility:** preservation of root canal anatomy due to C.Wire heat treatment
- ▶ **Minimally invasive:** gentle on the peri-cervical area and tooth structure

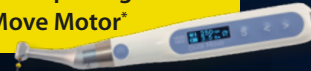
Max. torque:
4 N.cm

Speed: 300-400
rpm

Angle of
reciprocity:
170/60

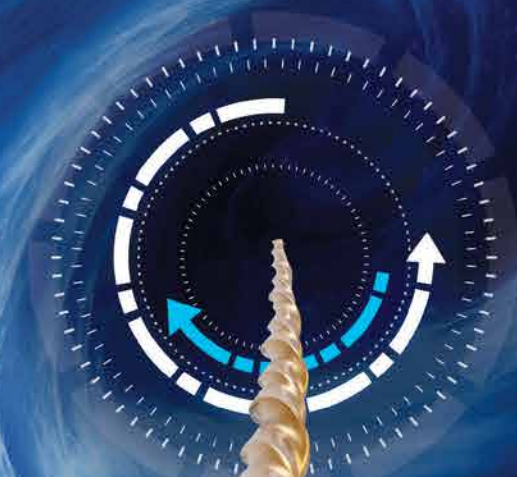
MicroMega One RECI

Promotion package with
Dual Move Motor*



5 pcs./pack (B5)

	L21 mm	L25 mm	L31 mm
B5 One RECI n20 4% sterile	60029878	60029883	60029888
B5 One RECI n25 4% sterile	60029879	60029884	60029889
B5 One RECI n25 6% sterile	60029880	60029885	60029890
B5 One RECI n35 4% sterile	60029881	60029886	60029891
B5 One RECI n45 4% sterile	60029882	60029887	60029892
B5 One RECI Assorted sterile	60029898	60029899	60029900



▶▶ 5 SIZES



▶▶ 3 LENGTHS



* Further information is available from your COLTENE area sales manager or at micromega.coltene.com



Did you know that ...

- ▶ our paper points are manufactured without bonding agents? This gives you reliable control of drying.



Paper Points

		● 25	● 30	● 35	● 40	● 45	Assortments
HyFlex CM Paper Points	100 pcs.	25/.04: 60022673	30/.04: 60022674	35/.04: 60022675	40/.04: 60022676	45/.04: 60022677	20-45/.04: 60022680
HyFlex EDM Paper Points	100 pcs.	25/~: 60022743	-	-	40/.04: 60022676	-	20/.05 – 60/.02: 60022744
MicroMega One RECI Paper Points Cellpack	144 pcs.	25/.04: 60031747	-	35/.04: 60031748	-	45/.04: 60031749	-
Paper Points Top colour	200 pcs.	344525	344530	344535	344540	344545	15-40: 344596
Paper Points Top colour Cellpack	180 pcs.	344825	344830	344835	344840	344845	15-40: 344896
Paper Points Colour	200 pcs.	340225	340230	340235	340240	340245	15-40: 340201

Perfectly matched to the HyFlex and MicroMega One RECI system

Gutta percha points

		● 20	● 25	● 30	● 35	● 40	● 45	Assortments
HyFlex CM gutta percha points	60 pcs.	20/.04: 60022689	25/.04: 60022690	30/.04: 60022691	35/.04: 60022692	40/.04: 60022693	45/.04: 60022694	20-45/.04: 60022703
HyFlex EDM gutta percha points	60 pcs.	20/.05: 60022706	25/~: 60022707	-	-	40/.04: 60022708	-	20/.05 – 60/.02: 60022705
MicroMega One RECI gutta percha points	60 pcs.	20/.04: 60031551	25/.04: 60031552	-	35/.04: 60031553	-	45/.04: 60031554	-
Gutta Percha Points Top colour	100 pcs.	365120	365125	365130	365135	365140	365145	15-40: 365196
Gutta Percha Points colour	100 pcs.	362020	362025	362030	362035	362040	362045	15-40: 362154



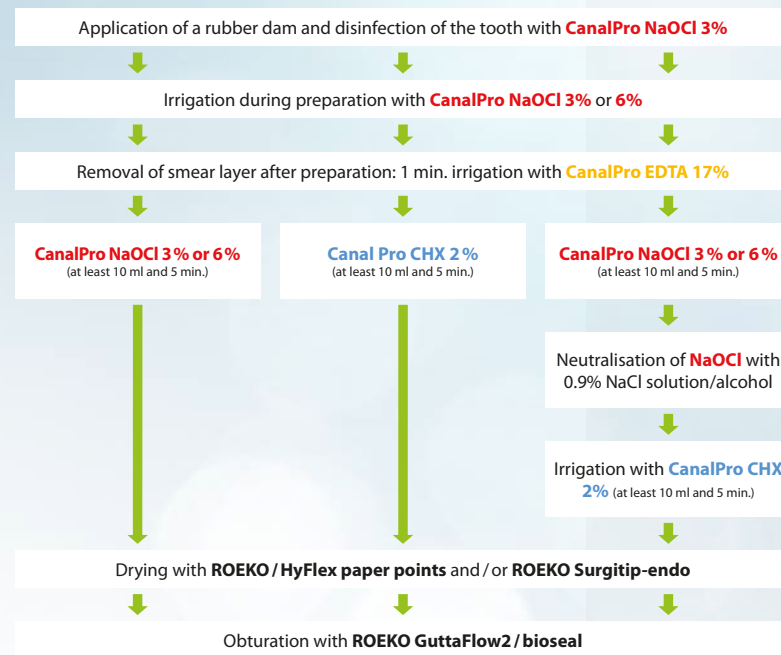


CanalPro SyringeFill

Innovative modular system for filling syringes with irrigation solutions

- ▶ Safe and clean dispensing
- ▶ Time-saving single-hand operation
- ▶ Stainless steel holder which can be used free-standing or wall-mounted
- ▶ Valve caps made of irrigation solution resistant material with integrated Luer lock

Recommended irrigation protocol



Important! After the use of **NaOCl** and before the use of **CHX**, the root canal must be neutralised by intermediate irrigation (e.g. with NaCl or alcohol).

Please note: Irrigation with NaCl is usually recommended before measuring the length with apex locators.



CanalPro SyringeFill Station

60031347

- 1 × Bottle holder incl. base
- 3 × CanalPro SyringeFill Cap

Holder

60031348

- 1 × Bottle holder for wall-mounting
- 3 × CanalPro SyringeFill Cap

CanalPro NaOCI



CanalPro NaOCI 3%
60019655V 1 × 500 ml

CanalPro NaOCI 6%
60019656V 1 × 500 ml

CanalPro EDTA 17%



CanalPro EDTA 17%
60019651 1 × 500 ml
60019654 1 × 100 ml

CanalPro CHX 2%



CanalPro CHX 2%
60019658 1 × 500 ml
60019659 1 × 100 ml

CanalPro accessories



CanalPro Colour Syringes

50 ×	●	●	●	○
5 ml	60019321	60019322	60019323	60019324
10 ml	60011173	60011174	60011175	60011176



CanalPro Slotted-End Tips

60011167	100 pcs./bag	27 ga, 0.4 mm
60011168	100 pcs./bag	30 ga, 0.3 mm



CanalPro Side-Port Tips

60011169	100 pcs./bag	27 ga, 0.4 mm
60011170	100 pcs./bag	30 ga, 0.3 mm

CanalPro SyringeFill Cap



SyringeFill Cap
60019662 1 ×



Did you know that ...

our SyringeFill system irrigation solutions

- ▶ do not smell?
- ▶ do not drip?
- ▶ do not need to be stored in the refrigerator?
- ▶ offer a consistent concentration?





roeko GuttaFlow

Dual safety stage

Safe sealing and filling

- ▶ Cold filling system for root canals
- ▶ Gutta percha and sealer in a single application
- ▶ Nearly insoluble
- ▶ Excellent flow properties
- ▶ Protection against reinfection due to expansion and tight seal
- ▶ GuttaFlow bioseal: the healing process is supported by increasing the pH value



1st safety stage

Owing to the slight expansion of GuttaFlow, the canal is sealed tightly.



2nd safety stage

The increase in pH value over several weeks and the formation of the hydroxylapatite crystals support the healing process in the root canal.¹

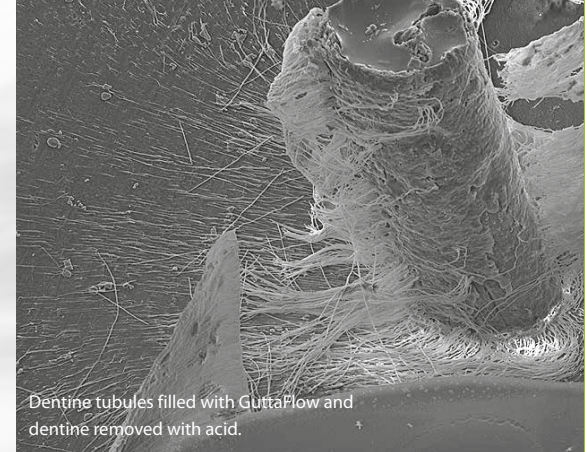


Tip:

- ▶ Wet the Masterpoint instead of filling directly into the canal. This way you avoid overpressing!



¹ Study: Maria Giovanna Gandolfi et al. (2016) Properties of a novel polysiloxane-guttapercha calcium silicate-bioglass-containing root canal sealer. Dent Mater. 32(5) p 113-126



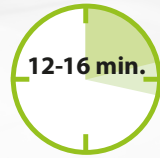
Dentine tubules filled with GuttaFlow and dentine removed with acid.

GuttaFlow 2



WORKING TIME:
10 min.
CURING:
25-30 min.

GuttaFlow bioseal



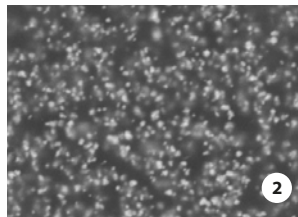
WORKING TIME:
5 min.
CURING:
12-16 min.

Fig. 1
3.5x magnification of the surface of GuttaFlow2.

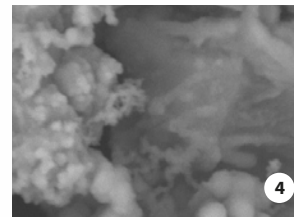
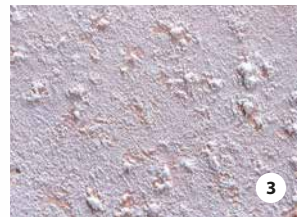
Fig. 2
2500x magnification of the surface of GuttaFlow2 under a scanning electron microscope.

Fig. 3
3.5x magnification of the surface of GuttaFlow bioseal. Recognisable formation of hydroxylapatite crystals on the surface.

Fig. 4
2500x magnification of the hydroxylapatite crystals on the surface of GuttaFlow bioseal under a scanning electron microscope.



Source: Internal tests



Source: Internal tests

GuttaFlow bioseal – not just for filling, also for healing

GuttaFlow bioseal supports regeneration by raising the pH level in the root canal. Hydroxylapatite crystals which support the healing process are formed on contact with the body's own fluids. This helps ENDO experts as well as beginners to create a lasting solution for their patients.

The simple way to root canal obturation

Excellent flow properties ensure optimum distribution throughout the root canal. GuttaFlow is thixotropic, so that its viscosity diminishes under pressure. The material therefore flows into the smallest canal and isthmus.

Further studies on GuttaFlow:
www.guttaflow.com

GuttaFlow 2

Standard set

60026870

- 1 × Dual-barrel syringe, 5 ml
- 12 × Mixing tips
- 1 × Mixing pad

Refill set syringe

60026871

- 1 × Refill syringe, 5 ml

GuttaFlow bioseal

Standard set

60019560

- 1 × Dual-barrel syringe, 5 ml
- 12 × Mixing tips
- 1 × Mixing pad

Refill set syringe

60019561

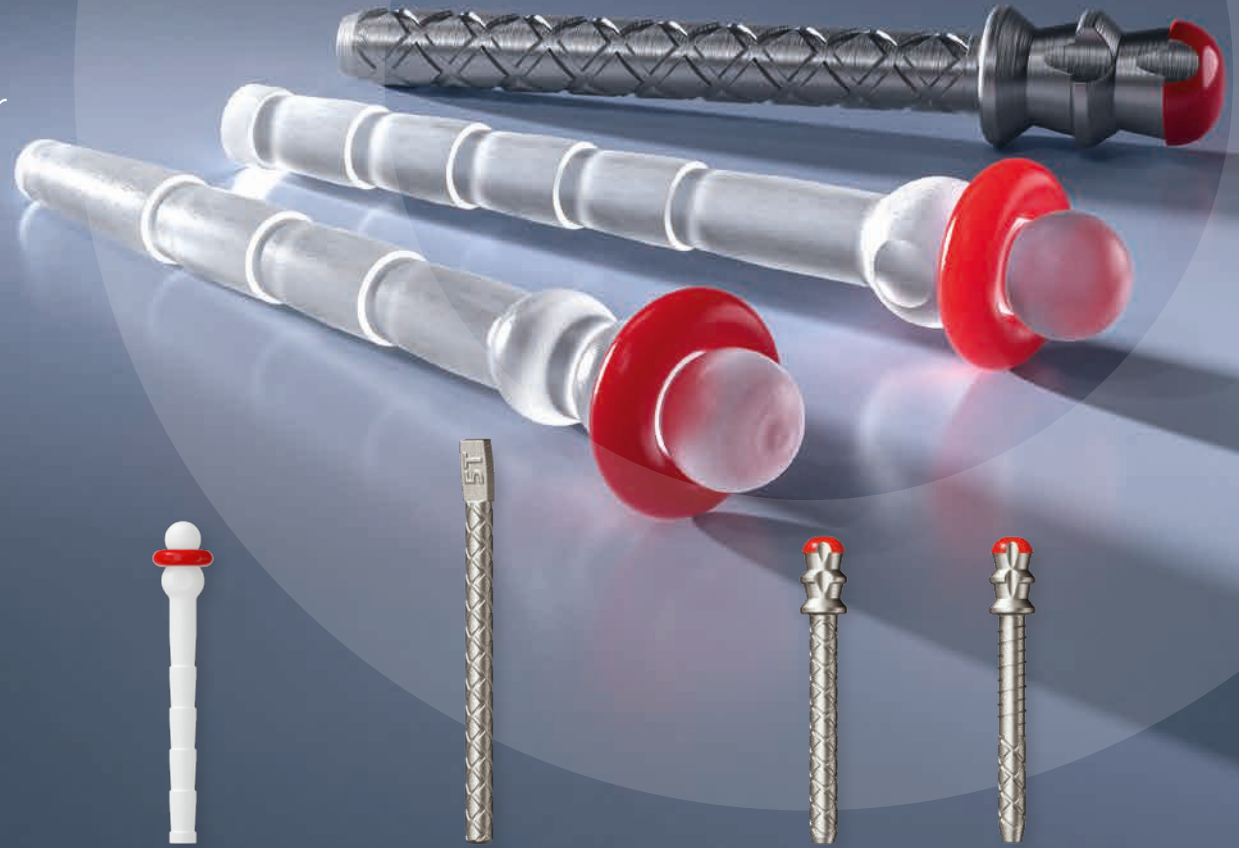
- 1 × Refill syringe, 5 ml

Reference: Prof. Halina Pawlicka, University of Lodz
Dr Johannes Ebert, University of Erlangen



ParaPost System

A complete range of root posts for direct and indirect indications



		○ Glass-fibre, metal-free root posts						× Stainless steel root posts			× Titanium root posts			
		ParaPost Taper Lux		ParaPost Fiber Lux		ParaPost Fiber White		ParaPost XP			ParaPost XH	ParaPost XT		
Size	ø in mm	10 pcs.	5 pcs.	10 pcs.	5 pcs.	10 pcs.	5 pcs.	25 pcs.	10 pcs.	10 pcs.	10 pcs.	30 pcs.	10 pcs.	
3	0.90	-	-	60018568	PF1713	60018563	PF1613	P7443B	P7443	P7843	P883	P6830B	P6830	
4	1.00	-	-	60018569	PF1714	-	-	P7444B	P7444	P7844	P884	P6840B	P6840	
4.5	1.14	60018577	PF18145	60018570	PF17145	60018564	PF16145	P74445B	P74445	P78445	P8845	P6845B	P6845	
5	1.25	60018578	PF1815	60018571	PF1715	60018565	PF1615	P7445B	P7445	P7845	P885	P6850B	P6850	
5.5	1.40	60018579	PF18155	60018572	PF17155	60018566	PF16155	-	P74455	P78455	P8855	-	P6855	
6	1.50	60018580	PF1816	60018573	PF1716	60018567	PF1616	-	P7446	P7846	P886	-	P6860	
7	1.75	-	-	-	-	-	-	-	P7447	P7847	P887	-	-	
Kits		PF180		PF170		PF160		P780			P780T	P880	P680T	



ParaCore

Dual-curing core build-up and fixation cement based on composite



× Cast root posts

ParaPost XP Impression Post	ParaPost XP Temporary	ParaPost XP Burnout	
20 pcs.	20 pcs.	25 pcs.	10 pcs.
P7433	P7463	P7513B	P7513
P7434	P7464	P7514B	P7514
P74345	P74645	P75145B	P75145
P7435	P7465	P7515B	P7515
P74355	P74655	P75155B	P75155
P7436	P7466	P7516B	P7516
P7437	P7467	-	P7517
P781			

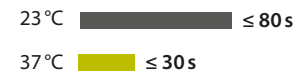


ParaCore 5 ml Refill

- 2 × Syringes, 5 ml
- 20 × Mixing / Root Canal Tips

- 5886 White
- 5887 Dentin
- 60011391 Dentin Slow
- 60011392 Translucent Slow

Working time



Working time Slow



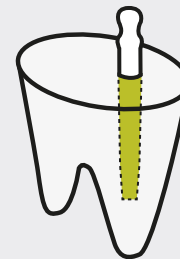
Curing time (not including working time)



Curing time (not including working time) Slow



Indications



Post cementing



Core build-up



Cementing of restoration

Systematic all-round safety

Smart. Efficient. Reliable.

The restorative COLTENE portfolio includes a wide range of compatible products that offer the right solution for any clinical situation, from simple direct restorative therapy to complex indirect restorations.

40 years of dental know-how in adhesive restorative dentistry have led to the development of state-of-the-art high-performance composite with easy handling and excellent colour integration. This makes providing long-lasting, minimally invasive and extremely aesthetic restorations very easy.

The COLTENE restorative system offers every user added value, be it today or in the future ...

RESTAURATION



Bond



Finish



Restore





ONE COAT 7 UNIVERSAL

One-component light-cured universal adhesive

- ▶ Only one universal bond for all indications and etching techniques
- ▶ Extremely economical: up to 300 applications per bottle
- ▶ Exceptional bonding values and excellent marginal seal
- ▶ No priming, no silanising - just apply, disperse with air and cure
- ▶ Activator for chemically curing luting materials available
- ▶ Easy to work with due to ergonomic triangular bottle
- ▶ Perfect bonding partner for the COLTENE range



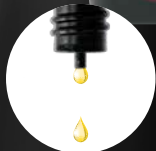


ONE COAT 7 UNIVERSAL

Intro Kit

60019538

- 1 × ONE COAT 7 UNIVERSAL, 5 ml
- 1 × Etchant Gel S, 2.5 ml
- 20 × Application needles
- 50 × Brushes black
- 1 × Mixing well with cover



300 ×

ONE COAT 7 UNIVERSAL

Refill

60019539

- 1 × ONE COAT 7 UNIVERSAL, 5 ml



Activator Kit

7054

- 1 × One Coat 7.0 Activator, 3 ml
- 50 × Microbrush Black

Etchant Gel S



- ▶ 35% phosphoric acid etchant gel
- ▶ Precise positioning
- ▶ Can be used for both enamel and dentine

Etchant Gel S Kit

7373

- 2 × Etchant Gel S, 2.5 ml
- 20 × Application needles

TempoSIL 2



- ▶ Temporary A-silicone cement for different surfaces
- ▶ Easy application and easy to remove

TempoSIL 2

Refill pack

- 6728 4 × Dentin, 5 ml
- 6730 4 × White, 5 ml

DuoTEMP



- ▶ Dual-curing temporary filling material
- ▶ Eugenol-free and radiopaque for temporary fillings
- ▶ Good bonding, easy to remove

DuoTEMP

- 5831 1 × Individually packed syringe, 5 g
- 7090 5 × Eco Pack syringe, 5 g

Information on further packs is available from your COLTENE area sales manager or at www.coltene.com





Universal Submicron Hybrid Composite

BRILLIANT EverGlow

Simply take three or more - as you like it

- ▶ Exceptional polishability and long-lasting brilliance
- ▶ Aesthetic single-shade restorations
- ▶ Versatile shade system with three translucency levels
- ▶ Easy sculptability and smooth consistency
- ▶ Good wettability with minimal stickiness to the instrument



Range of shades

		Syringes (1 × 3 g)	Tips (20 × 0.2 g)
UNIVERSAL	Bleach	60019697	60019706
	A1/B1	60019698	60019707
	A2/B2	60019699	60019708
	A3/D3	60019700	60019709
	A3.5/B3	60019701	60019710
	C2/C3	60019702	60019716
	A4/C4	60019703	60019717
TRANSLUCENCY	TRANSLUCENT	60019704	60019718
	BLEACH TRANSLUCENT	60019705	60019719
OPAQUE	OPAQUE BLEACH	60019743	60019746
	OPAQUE A1	60019744	60019747
	OPAQUE A2 NEW	60023819	60023823
	OPAQUE A3	60019745	60019748
	OPAQUE A4 NEW	60023820	60023824



EcoPacks

- ▶ More content at a lower unit price!
- ▶ EcoPack syringes: corresponds to 4 + 1 promotion
- ▶ EcoPack tips: corresponds to 50 + 10 promotion

Syringes	Tips	
5 × 3 g	60 × 0.2 g	
60024166	60024160	● A1 / B1
60024167	60024161	● A2 / B2
60024168	60024162	● A3 / D3
60024169	60024163	● A3.5 / B3



"BRILLIANT EverGlow allows extremely user-friendly, fast and very good aesthetic rehabilitation of the maxillary anterior by only using a single universal shade material".

Dr med. dent. Markus Lenhard, Switzerland



"With BRILLIANT EverGlow, an aesthetically perfect restoration has become child's play. The shades make the filling margins invisible. Quite literally, the brilliance and gloss retention of BRILLIANT EverGlow is compelling, even with little polishing".

Dr med. dent. Sylvia Rahm, Germany



FLOWABLE SUBMICRON HYBRID COMPOSITE

BRILLIANT EverGlow

Flow

The ideal complement

- ▶ BRILLIANT EverGlow Flow combines low viscosity and yet high stability due to its extremely well balanced thixotropy.
- ▶ An additional, extra-thin application needle expands the range of accessories and allows particularly precise and pinpoint dispensing of extremely small amounts.



Refill Flow

- 1 x Syringe, 2 g
- 5 x Application needles, 0.8 mm
- 5 x Application needles, 0.4 mm

Application Needles , 20 pcs.



Available in two different sizes

Range of shades

Bleach	60019752 (Syringe)	A3.5/B3	60019756 (Syringe)
A1/B1	60019753 (Syringe)	A4/C4	60019757 (Syringe)
A2/B2	60019754 (Syringe)	Translucent	60019758 (Syringe)
A3/D3	60019755 (Syringe)	Opaque A3	60023825 (Syringe) NEW
		Opaque A2	60019751 (Syringe)

Everything you need for the right preparation and beautiful finishing of your restoration:

DIATECH Kits



BRILLIANT Dentistry Kit
60029907



ShapeGuard Composite Polishing Plus
60019916



"BRILLIANT EverGlow is one of my go-to composites. It's simple to use, easy to handle and produces an excellent gloss everytime".

Dr Monik Vasant, BChD MFGDP MSc, England

DUAL-CURING BULK-FILL COMPOSITE

Fill-Up!

Deep. Fast. Perfect.

Decisive benefits compared to other bulk-fill materials:

- ▶ Bulk-fill material which is dual-curing (chemical- and light-curing) and thus enables guaranteed deep polymerisation independent of the layer thickness and accessibility of the light source
- ▶ Top coating is not necessary but possible
- ▶ Optimum marginal seal with the bonding partners ParaBond and ONE COAT 7 UNIVERSAL (to be used with activator)
- ▶ Minimal shrinkage stress due to chemical curing
- ▶ Contains antibacterial zinc oxide
- ▶ Easy application with an automix syringe
- ▶ Only 1 shade (between VITA A2 and A3)
- ▶ Little time investment (one application, no need to select shades)
- ▶ Economical restoration for patients



WORKING TIME:

1 min.

CURING:

2 min.



Fill-Up! Economy Kit

60019355

- 5 × Fill-Up! Universal, 4.5 g
- 15 × Mixing Tip Short Super Fine
- 20 × Mixing Tip Short Fine

Fill-Up! Refill

60019341

- 1 × Fill-Up! Universal, 4.5 g
- 3 × Mixing Tip Short Super Fine
- 4 × Mixing Tip Short Fine



- ▶ Guaranteed single-layer technique - even in very deep cavities of 10 mm
- ▶ The filling can be finished immediately after only 5 seconds of light curing

Tip:

- ▶ Can also be used for core build-ups!



For more information and studies see: fill-up.coltene.com



The Direct Composite Veneering System

BRILLIANT COMPONEER

A Smile Made Brilliant

Polymerised prefabricated composite enamel shells for the aesthetic restoration of anterior teeth

- ▶ Combines the advantages of direct restoration with the advantages of the indirect veneering technique
- ▶ Aesthetic, high-quality anterior tooth restorations
- ▶ Minimally invasive restorations based on composites
- ▶ Only one session - no laboratory necessary
- ▶ Long-lasting gloss and excellent polishability
- ▶ Highly cost-effective for both the dental practice and the patient
- ▶ Homogeneous bond of BRILLIANT COMPONEER, BRILLIANT EverGlow as luting composite and the natural tooth due to ONE COAT 7 UNIVERSAL as the perfect partner

The enamel shells are available singly and as a complete front (set of 6).

Initial situation



Anterior teeth with old, discoloured restorations

Result



A brilliant smile two weeks after treatment

Upper jaw						
FDI	13	12	11	21	22	23



S, M, L, XL

Upper jaw		
FDI	14	24



S, L

Lower jaw						
FDI	43	42	41	31	32	33



S, M

BRILLIANT COMPONEER Kits

Everything you need for your anterior tooth restoration:



BRILLIANT COMPONEER Intro Kit syringes 4 × syringes BRILLIANT EverGlow, 3 g (A1/ B1, A2/B2, Trans, BL Trans)

60023214

- 28 × Veneers
- 25 × Brushes
- 5 × COMPONEER Contour Guide
- 1 × Etchant Gel S, 2.5 ml
- 4 × DIATECH silicone polisher
- 1 × ONE COAT 7 UNIVERSAL, 5 ml
- 1 × Shade Guide
- Miscellaneous accessories

BRILLIANT COMPONEER Intro Kit Tips 32 × 0.2 g Tips BRILLIANT EverGlow (A1/ B1, A2/B2, Trans, BL Trans)

60023215

- 28 × Veneers
- 25 × Brushes
- 5 × COMPONEER Contour Guide
- 1 × Etchant Gel S, 2.5 ml
- 4 × DIATECH silicone polisher
- 1 × ONE COAT 7 UNIVERSAL, 5 ml
- 1 × Shade Guide
- Miscellaneous accessories

Everything you need for the right preparation and beautiful finishing of your restoration:

DIATECH Kits



BRILLIANT COMPONEER Preparation and Finishing Kit 60029906



Tip:

- ▶ BRILLIANT COMPONEER is easy to customise. By using a disc, the basic anatomical shape can be individually finished for the patient. Additionally the labial surface texture can be accentuated with a fine-grained diamond.





BRILLIANT Crios

Reinforced CAD/CAM composite for permanent restorations

- ▶ Short duration of treatment
- ▶ Minimally invasive due to caring preparation
- ▶ Outstanding physical and biomechanical properties
- ▶ Tooth-like modulus of elasticity for a shock-absorbing effect and pleasant bite experience
- ▶ Exceptional grinding precision
- ▶ Excellent monobloc bond of BRILLIANT Crios to the natural tooth
- ▶ Can be modified and repaired intraorally

BRILLIANT Crios is available with both CEREC and Planmill holders

NEW SUPER TRANSLUCENCY LEVEL

for the excellent reproduction of natural enamel. Available in two variants:

- Bleach Super Translucent
- Universal Super Translucent



Intro Kit CEREC 12

60020095

1 each A2 LT 12, A3 LT 12, A3.5 LT 12, A2 HT 12, A3 HT 12

5 × ONE COAT 7 UNIVERSAL
Single Dose, 0.1 ml

Intro Kit CEREC 14

60020097

1 each A2 LT 14, A3 LT 14, A3.5 LT 14, A2 HT 14, A3 HT 14

5 × ONE COAT 7 UNIVERSAL
Single Dose, 0.1 ml

Refills (5 blocs)

Sizes

12 12 × 10 × 15 mm

14 14 × 12 × 18 mm

Shades

Low Translucent (LT)

Bleach, A1, A2, A3, A3.5, B1, B2, B3, C2

High Translucent (HT)

A1, A2, A3, B1

Super Translucent (ST) **NEW**

Bleach, Universal

Discs (1 pc.)

Sizes

H14 14 × 98.5 mm

H18 18 × 98.5 mm

Shades

Low Translucent (LT)

A1, A2, A3, A3.5

High Translucent (HT)

A1, A2, A3

Super Translucent (ST) **NEW**

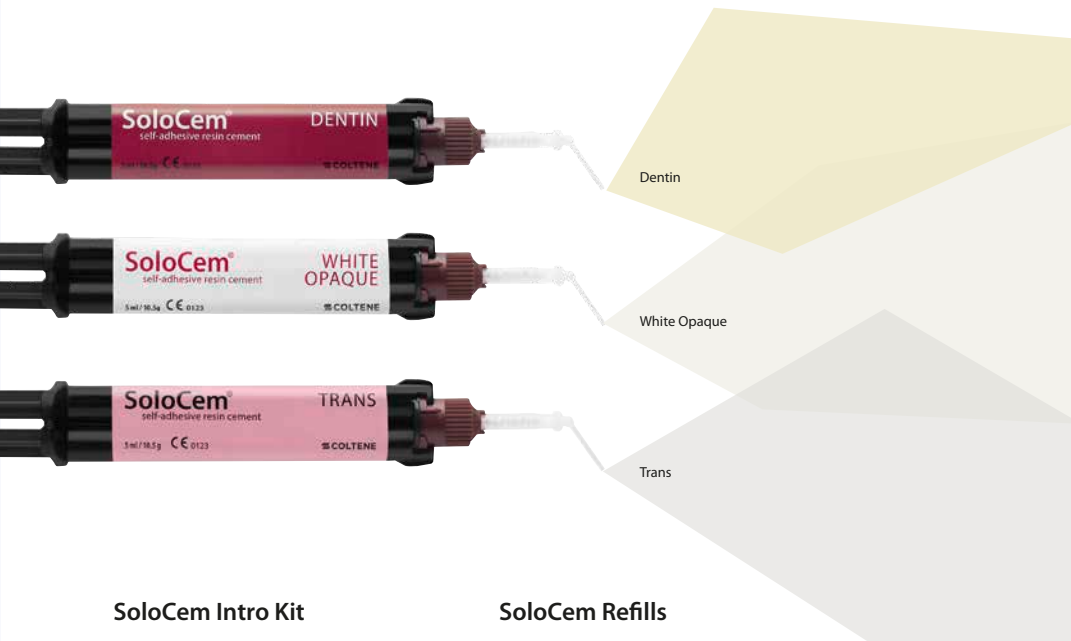
Bleach, Universal

SoloCem

THE NEW SUPERKRAFT

Self-adhesive, dual-curing composite and cement

- ▶ Depending on the situation, SoloCem can be used either self-adhesively or adhesively, in combination with ONE COAT 7 UNIVERSAL.
- ▶ Only one cement for virtually all indications
- ▶ Long-lasting restorations
- ▶ Aesthetic luting
- ▶ Easy to use



SoloCem Intro Kit

- 60013986
- 1 × SoloCem Trans, 5 ml
 - 1 × SoloCem Dentin, 5 ml
 - 10 × Mixing Tip Short Fine
 - 10 × Mixing Tip Short Super Fine

SoloCem Refills

- 1 × SoloCem syringe, 5 ml
 - 5 × Mixing Tip Short Fine
 - 5 × Mixing Tip Short Super Fine
- 60014062 Dentin
60014061 White Opaque
60019840 Trans

S.P.E.C 3 LED

Polymerisation lamp

- ▶ Selectable intensity from 1600 to 3000 mW / cm² (±10%) depending on the clinical situation
- ▶ Highest light output for an efficient reduction in polymerisation times
- ▶ Increased comfort for patient and practice staff due to shortened exposure times
- ▶ Replaceable, powerful lithium polymer battery



S.P.E.C. 3 LED Kit

60013942

- 1 × Handpiece
- 1 × Light guide, clear 8 mm
- 2 × Light shields
- 1 × Eye protection shield
- 1 × Charger base
- 1 × Protective covers

S.P.E.C. 3 Accessories

- | | | |
|----------|----------|--------------------------|
| 60013950 | L 75 mm | Light guide, clear 8 mm |
| 60013951 | L 75 mm | Light guide, clear 11 mm |
| 60019326 | L 105 mm | Light guide, black 8 mm |
| 60019327 | L 105 mm | Light guide, black 11 mm |





COLTENE
DENTAL MANAGEMENT ACADEMY

Exclusive Further Education

COLTENE offers regular training with added value. In the practice-oriented workshops you can find out more about the latest options in endodontics, restorative dentistry and hygiene.



For information on our training courses please visit events.coltene.com

Coltene/Whaledent GmbH + Co. KG
Raiffeisenstraße 30
89129 Langenau / Germany
T +49 7345 805 0
info.de@coltene.com

Coltene/Whaledent AG
Feldwiesenstrasse 20
9450 Altstätten / Switzerland
T +41 71 757 53 00
info.ch@coltene.com

www.coltene.com

