



Cool Temp[®]
N A T U R A L



 **COLTENE**

AUTOMIX TEMPORARY CROWN AND BRIDGE MATERIAL



PATIENT KEEPS COOL

Cool Temp NATURAL's low curing temperature does not damage or irritate the pulp creating no discomfort for the patient. Easy fabrication using Cool Temp NATURAL also allows less chairtime for the patient.

DENTIST KEEPS COOL

Predictable and precise temporaries can be made with Cool Temp Natural, without extensive chairside adjustments.

An optimized elastic phase allows the material to be easily removed after a short time in the mouth. The inhibition layer is quickly wiped clean. The result is an accurate provisional that can be trimmed and polished effortlessly.

EASY AUTOMIX

Cool Temp NATURAL is supplied in a 50 ml convenient automix cartridge that fits the new standard dispenser as well as a 5 ml automix syringe.

Automix delivery is simple, saves time, is efficient and consistently provides a homogeneous material.

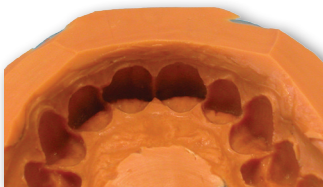
5 ml AUTOMIX SYRINGE

- Effortless delivery
- Precise, direct loading of Matrix
- Less overfill = minimal waste
- No dispenser needed
- Ideal for single crowns

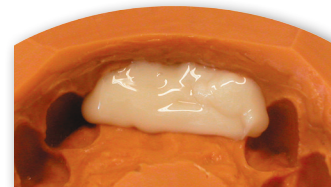


STEP BY STEP

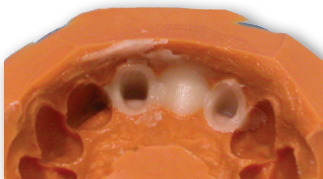
1. Prior to tooth preparation, take an impression. Then prepare the teeth as required.



2. Load the impression with Cool Temp NATURAL and place over the prepared teeth (35 sec).



3. After 30–45 sec in the mouth, remove the Cool Temp NATURAL provisional. It will have a firm elastic consistency and will come out easily.



4. The complete restoration after preparation & polishing.



To further simplify removal, isolate the prepared teeth with COLTENE® Separator prior to placing Cool Temp NATURAL.

Use Synergy® D6 Flow to fill voids, refine margins, and improve contacts.





Order Information

Cool Temp NATURAL

Cartridges

5800 Cool Temp Intro Kit Cool Temp cartridge, A2, A3.5 MT/BLUE/CLEAR/WHITE/77/P* SYNERGY D6 Flow A2/B2 SYNERGY D6 Flow A3.5/B3 Flow application needles	2 × 50 ml 20 pcs. 1 × 2.3 g 1 × 2.3 g 4 pcs.
5805 Cool Temp Single Pack Cool Temp cartridge A2 MT/BLUE/CLEAR/WHITE/77/P*	1 × 50 ml 10 pcs.
5810 Cool Temp Single Pack Cool Temp cartridge A3.5 MT/BLUE/CLEAR/WHITE/77/P*	1 × 50 ml 10 pcs.
5815 Cool Temp Single Pack Cool Temp cartridge A1 MT/BLUE/CLEAR/WHITE/77/P*	1 × 50 ml 10 pcs.

* MT = Mixing Tip

Syringes


5820 Cool Temp syringe Refill Cool Temp syringe A1 MT/BROWN/CLEAR/RED/50/P*	2 × 5 ml 8 pcs.
5824 Cool Temp syringe Refill Cool Temp syringe A2 MT/BROWN/CLEAR/RED/50/P*	2 × 5 ml 8 pcs.
5825 Cool Temp syringe Refill Cool Temp syringe A3.5 MT/BROWN/CLEAR/RED/50/P*	2 × 5 ml 8 pcs.

Accessories

8469 Flow application needles, bent	20 pcs.
6900 COLTENE Dispenser 50 / 75 ml	1 pc.
7774 MT/BLUE/CLEAR/WHITE/77/P*	40 pcs.
6748 MT/BROWN/CLEAR/RED/50/P*	40 pcs.
7235 Separator (for intra-oral use)	1 × 5 ml

Coltène/Whaledent Inc.
235 Ascot Parkway
Cuyahoga Falls, OH 44223 / USA
Tel. USA & Canada + 1 800 221 3046
+ 1 330 916 8800
Fax +1 330 645 8704
info.us@coltene.com

Coltène/Whaledent AG 
Feldwiesenstrasse 20
9450 Altstätten / Switzerland
Tel. +41 (0)71 757 53 00
Fax +41 (0)71 757 53 01
info.ch@coltene.com

Coltène/Whaledent GmbH + Co. KG 
Raiffeisenstrasse 30
89129 Langenau / Germany
Tel. +49 (0)7345 805 0
Fax +49 (0)7345 805 201
info.de@coltene.com

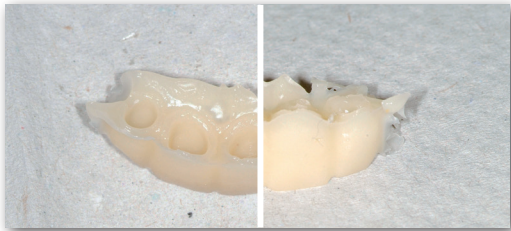
CLINICAL CASE, DR. AMON GABRIEL SANDER, SCHRUNS, AUSTRIA



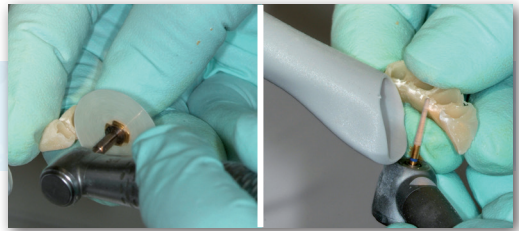
1. The vacuum-formed template prepared on the study model is filled with Cool Temp NATURAL.



2. The vacuum-formed template filled with Cool Temp NATURAL must be placed into the mouth within 35 sec. Excess material should be removed using a plastic instrument.



3. After 30-45 sec in the mouth, Cool Temp NATURAL can be removed. If necessary, the provisional restoration can be tested to determine if it fits properly.



4. After removing the provisional restoration from the preliminary impression or from the prepared tooth, removal of excess material and preparation of the surface can be performed using rotary instruments. The oxygen inhibition layer on the surface of the Cool Temp Natural provisional restoration should be removed using alcohol.

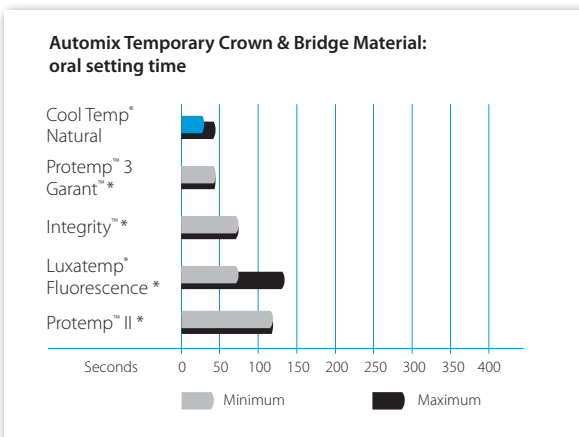


5. Synergy D6 Flow is ideal to fill voids, refine margins and improve contacts.

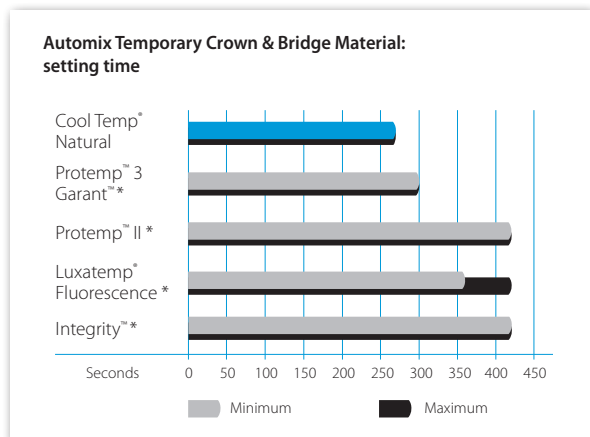


6. Within only a few minutes, a precision provisional is prepared.

UP TO 75% LESS TIME IN MOUTH



FASTER THAN LEADING BRANDS



Cool Temp[®] is a registered brand of Coltène/Whaledent.
 * All other brands are not registered trademarks of Coltène/Whaledent.