

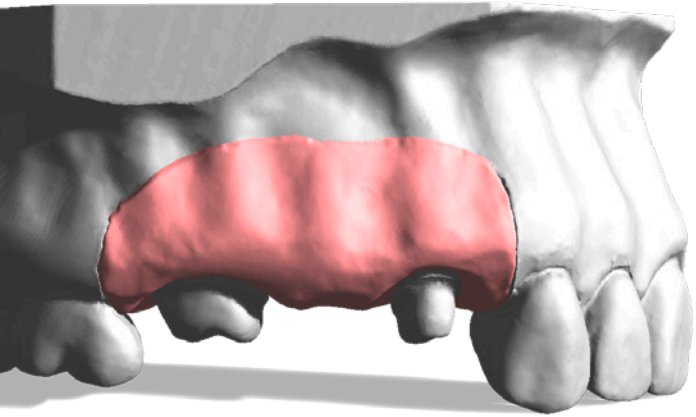
SCANNABLE GINGIVA MASK



GI-MASK[®] 3D

Digitise & Visualise

 **COLTENE**



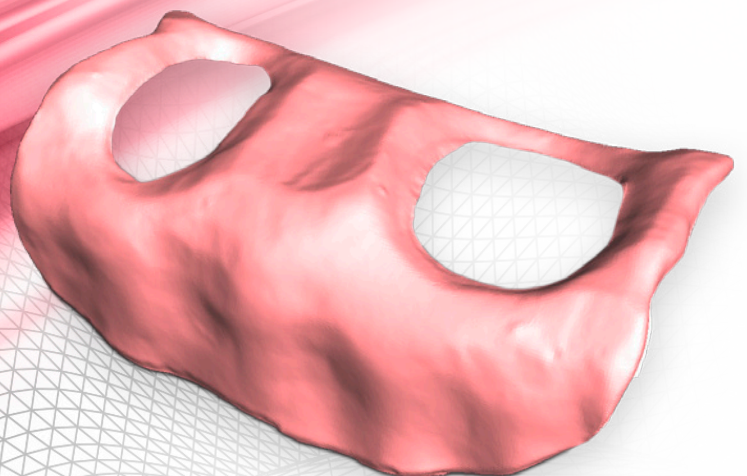
Digitise & Visualise

The scannable GI-MASK 3D allows digitising reproduced gingiva profiles in the preparation area without scan spray.

- Scannable without surface treatment
- Excellent flowability
- Extremely high elasticity and tear strength

Complete reproduction of the periodontal situation

The use of a gingival mask is particularly important in the fabrication of implant-supported suprastructures to achieve the best fit for dentures. The GI-MASK 3D is a high precision A-Silicone with exceptional flowability, giving a uniform flow around the posts mounted in the impression, and thus guaranteeing a complete reproduction of the periodontal situation.



Highly elastic, tear-resistant and easy handling

GI-MASK 3D is a flexible gingival mask for dental implant and master models. When working on the model, the gingival mask needs to allow for flexible processing. GI-MASK 3D is characterised by extremely high elasticity and tear strength. Nonetheless, it can be processed extremely well with the corresponding silicone trimmer.

The scannable properties of GI-MASK 3D allow complete digitisation of the material with conventional desktop scanners without the need for powder. This makes GI-MASK 3D an important link in the CAD/CAM process for fabricating dentures.

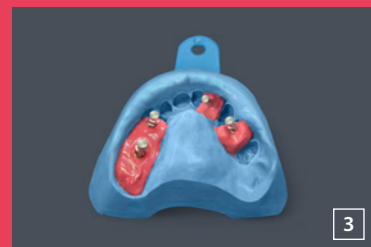
Direct technique



1 Isolate the impression with GI-MASK Universal Separator



2 Direct application of GI-MASK 3D into impression



3 Good thixotropic consistency



4 Casting the impression with ultra hard plaster



5 Finished model with GI-MASK 3D



6 Scanning the model with the desktop scanner

Indirect technique



1 Working model with COLTENE Lab Putty key



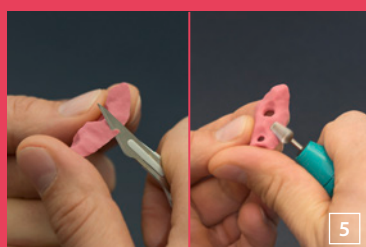
2 Isolate silicone key with GI-MASK Universal Separator



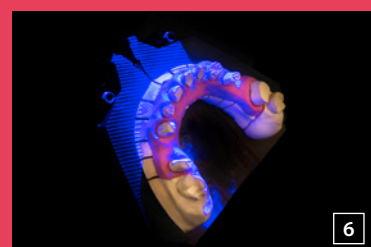
3 Inject GI-MASK 3D



4 Finished model with GI-MASK 3D



5 Easy cutting and trimming



6 Scanning the model with the aid of the desktop scanner

Order information



60022250 GI-MASK 3D Starter Kit
2 × Cartridge, 50 ml
1 × Universal Separator, 50 ml
1 × 12 pcs. Universal Mixing Tips
1 × 12 pcs. Oral Tips
1 × Trimmer for silicones

60022251 GI-MASK 3D Refill
2 × Cartridge, 50 ml
1 × 12 pcs. Universal Mixing Tips
1 × 12 pcs. Oral Tips



© 2018 Coltène/Whaledent AG - www.coltene.com



Coltène/Whaledent Ltd.
The President Suite
Kendal House, Victoria Way
Burgess Hill, West Sussex
RH15 9NF/UK
T +44 1444 235486
F +44 1444 870640
info.uk@coltene.com

Coltène/Whaledent AG
Feldwiesenstrasse 20
9450 Altstätten/Switzerland
T +41 71 757 5300
F +41 71 757 5301
info.ch@coltene.com

Coltène/Whaledent Inc.
235 Ascot Parkway
Cuyahoga Falls, Ohio 44223/USA
T +1 330 916 8800
F +1 330 916 7077
info.us@coltene.com

 **COLTENE**