



**PerFect<sup>®</sup> TCS II**  
Tissue Contouring System

## Clinically Superior Results and Increased Productivity

- Exceptional cutting precision
- Stops bleeding quickly
- Fast healing

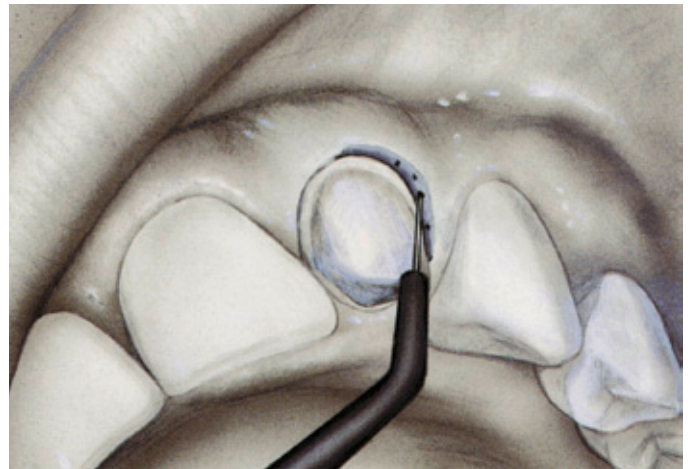
# How to make everyday procedures simpler and clinically superior

**PerFect® TCS II, a high frequency electro-surgery system, helps manage soft tissue with greater efficiency, greater precision and less bleeding than the common dental scalpel**

- ▼ Removes unwanted tissue with ease
- ▼ Reduces chair time by simplifying operative procedures and maintaining hemostasis
- ▼ Provides outstanding cutting precision for superior clinical and aesthetic results
- ▼ Allows uneventful healing

## **Other clinical applications:**

- ▼ Widening gingival sulcus
- ▼ Crown lengthening
- ▼ Exposing impacted teeth
- ▼ Incising abscesses
- ▼ Removing hyperplastic gingiva
- ▼ Frenectomy
- ▼ Stops bleeding



Using the Straight Knife electrode to stop bleeding in gingival sulcus

## **Control bleeding with a touch of the electrode**

- ▼ PerFect TCS II quickly stops bleeding caused by tooth preparation or cord placement with just a few dabs of the electrode
- ▼ The procedure continues without delay – no more waiting or extra appointments

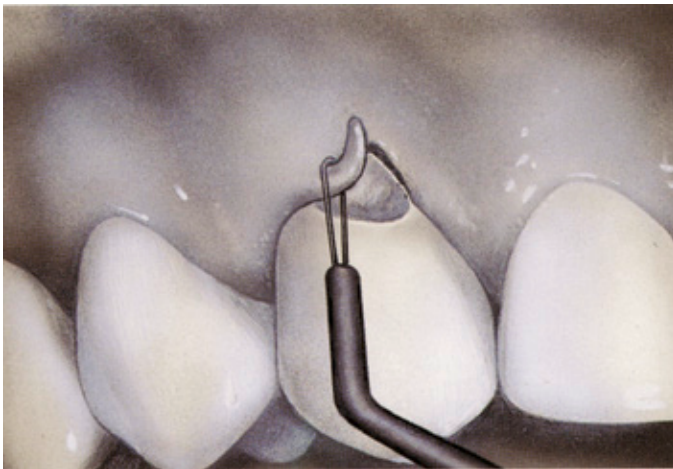
pre-operative



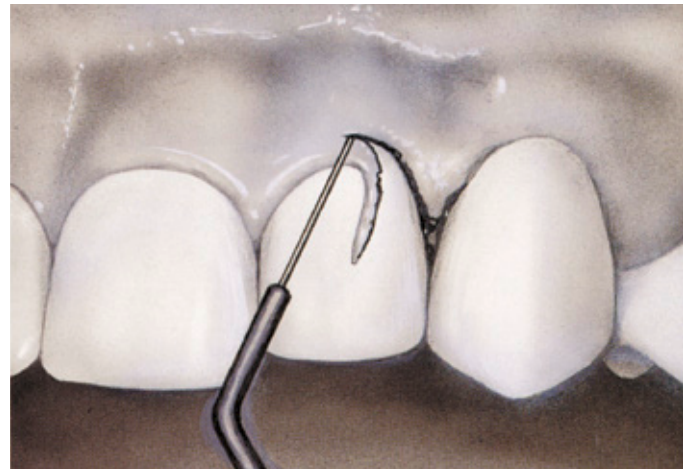
post-operative



**Coagulation in gingival trough**



Using the Long Loop electrode to remove occluding gingiva



Using the Straight Knife electrode to restore gingival symmetry

### Gain access to caries quickly and efficiently

- ▼ With PerFect TCS II, you can quickly remove gingival tissue occluding carious lesions
- ▼ Restorations – even with composites – may begin immediately because the operative field is blood-free

### Contour tissue with unparalleled precision

- ▼ With PerFect TCS II, you can shave fine, “paper-thin” layers of tissue even in hard to reach areas
- ▼ Facilitate impression taking, cementation, and aesthetic procedures by removing redundant tissue with little or no bleeding

pre-operative



post-operative



Subgingival access and visibility

pre-operative



post-operative



Aesthetic contouring of gingiva

**PerFect® TCS II**

Tissue Contouring System

# PerFect® TCS II

The state-of-the-art electrosurgical system for precise and efficient tissue contouring

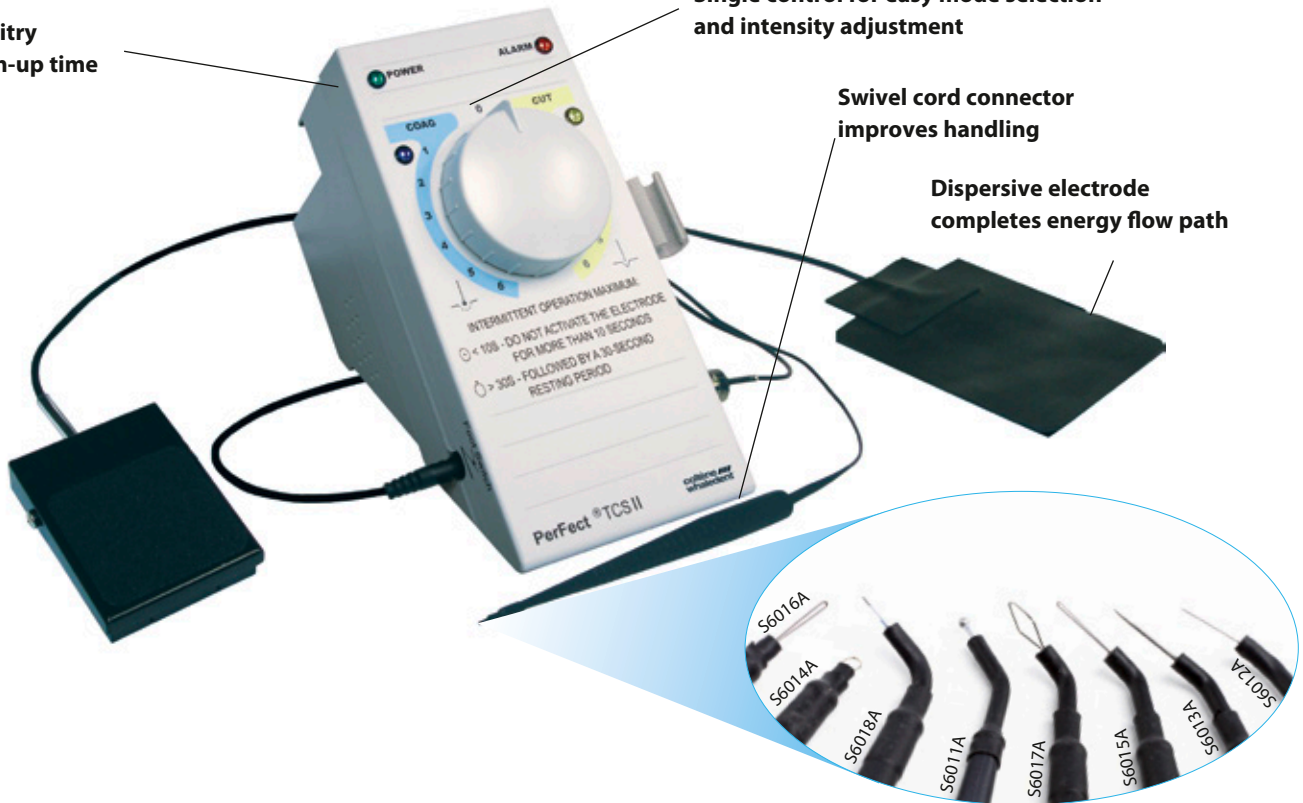
Solid state circuitry eliminates warm-up time

Single control for easy mode selection and intensity adjustment

Waterproof footswitch for hands-free electrode activation

Swivel cord connector improves handling

Dispersive electrode completes energy flow path



8 pcs. Autoclavable electrode sheaths

## Ordering Information

<b>PerFect® TCS II</b>	230V
<b>Cat. No.</b>	S8230CE
	S8230UK

Included Components	Qty.
PerFect TCS II Unit 230V	1
Cord Assembly S6008CE	1
Electrode Set S7010A (S6011A, S6012A, S6015A)	3
Dispersive Electrode S213	1
Footswitch assembly S5006	1
Handpiece Holder S7001	1
Introductory DVD	1
Step-by-step Owner's Guide	1

Cat. No.	Electrode Sheaths	Qty.
S6010A	Complete Set S6011A thru S6018A	8
S7010A	Included Set S6011A, S6012A, S6015A	3
S6011A	Coag Ball	2
S6012A	45° Straight Knife	2
S6013A	45° Tapered Knife	2
S6014A	Straight Round Loop	2
S6015A	45° Long Loop	2
S6016A	Straight Long Loop	2
S6017A	45° Diamond Loop	2
S6018A	90° AP 1½	2

## Technical Data

Measure:	108 × 159 × 222 mm
Weight:	2.4 kg

**Coltène/Whaledent AG**  
 Feldwiesenstr. 20  
 9450 Altstätten/Switzerland  
 Tel. + 41 71 757 53 00  
 Fax + 41 71 757 53 01  
 info.ch@coltene.com

**Coltène/Whaledent Inc.**  
 235 Ascot Parkway  
 Cuyahoga Falls,  
 Ohio 44223/USA  
 Tel. + 1 330 916 8800  
 Fax + 1 330 916 7077  
 info.us@coltene.com

**Coltène/Whaledent Ltd.**  
 The President Suite  
 Kendal House, Victoria Way  
 Burgess Hill, West Sussex  
 RH15 9NF / UK  
 Tel +44 1444 235486  
 Fax +44 1444 870640  
 info.uk@coltene.com

© 2015 Coltène/Whaledent AG – www.coltene.com

**COLTENE**