

EDM NITI FILE SYSTEM



HyFlex EDM – OGSF Sequence

Take control in your hands

 COLTENE

HyFlex EDM

Outstanding fracture resistant files for safer treatment

HyFlex EDM files have a unique surface and stand out by their durability and high fracture resistance. This is achieved by an innovative manufacturing process using "Electric Discharge Machining" (EDM). In addition, HyFlex files are manufactured from nickel-titanium alloy with Controlled Memory heat treatment (CM).

The entirely unique combination of flexibility and fracture resistance makes it possible to reduce the number of HyFlex EDM files required for cleaning and shaping during root canal treatments without having to compromise preservation of the root canal anatomy.

Safely regenerable multiple times

Resetting behavior allows visual control after autoclaving and enables multiple use

- ✓ Ready for safe reuse 
- ✗ Untwisted (discard) 

"Whether simple or complex root canal anatomy, almost all clinical cases can be treated with one sequence. The file dimensions (tip size and taper) are perfectly coordinated. I have everything under control, and the success is predictable."



Prof. Dr. Eugenio Pedullà
University Catania, Italy

"With just a few peckings, I reach the measured working length without any stops in between, so to speak. Previously, a file had to be inserted into the root canal several times. That is no longer necessary here! The OGSF sequence can be applied effortlessly even in difficult cases."



Dr. Thomas Rieger
Endo Specialist, Memmingen, Germany

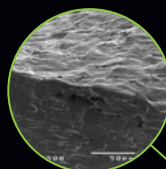
HyFlex EDM OGSF Shaper



Pre-sterile
Immediately usable



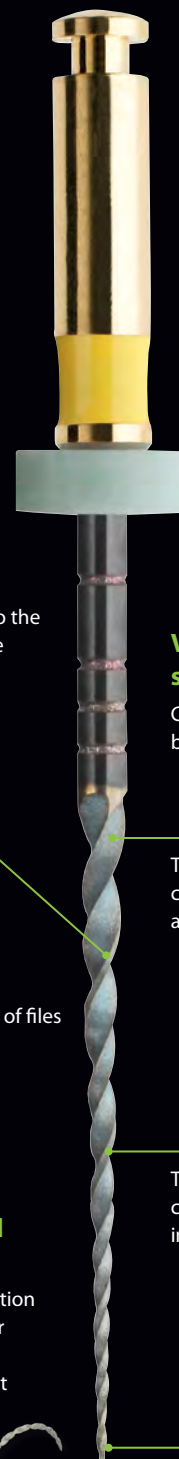
Excellent fracture resistance
Safer treatment thanks to the unique hardened surface



Powerful cutting performance
Allows a smaller number of files for quick preparation



Highly flexible and pre-bendable
Evenly, centered preparation reduces risk of ledging or perforation due to the controlled memory effect



Variable cross-section Design
Contributes to high breakage resistance

Triangular cross-section at top

Trapezoidal cross-section in middle

Quadratic cross-section at tip



OGSF Sequence

The new HyFlex EDM files –
Designed to be used as a sequence

Did you say fast and safe?
Discover the new sequence solution!

The HyFlex EDM file system offers a tailor-made solution for fast and reliable preparation of daily cases. Evidence shows that by applying checklists and following standard protocols, reproducible results and safety are increased. Based on this awareness, COLTENE offers new HyFlex EDM files designed to be used as a sequence with one, straight forward protocol to achieve a short learning curve and a simplified treatment.

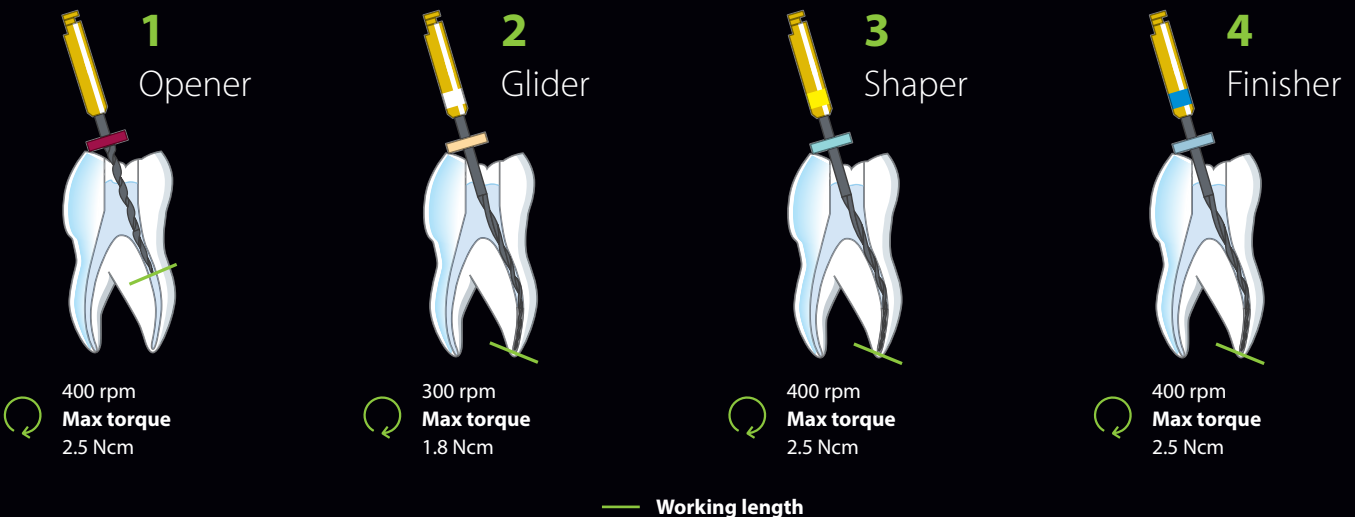
The new HyFlex EDM OGSF sequence includes an Opener and Glider for opening the glide path, as well as a Shaper for shaping the root canal over the full length.

The OGSF sequence was developed in cooperation with Prof. Eugenio Pedulla and provides smooth feeling when shifting from one file to another due to optimized match of tip and taper.

Overall you will be able to reach working length with only few strokes using tapping motions. That means less insertions and more safety.

Benefits

- **Predictable results**
by applying the OGSF standard protocol
- **Fast preparation of daily cases**
thanks to the optimized match of tip and taper along the sequence
- **Higher patient safety**
as a result of high material fracture resistance and following the OGSF standard protocol



Order Information

Shaping

HyFlex EDM OGSF Set, 4 pcs	21 mm	25 mm	
OGSF Sequence	60036141	60036142	
HyFlex EDM OGSF Files, 3 pcs	18 mm	21 mm	25 mm
Orifice Opener 18/.11	60036140	-	-
Glidepath File 15/.03	-	60023493	60023492
Shaping File 18/.045	-	60036136	60036137
Finishing File 30/.04	-	60036138	60036139
HyFlex EDM Finishing File, 3 pcs	21 mm	25 mm	
Finishing File 40/.04	60022271	60019597	
Finishing File 50/.03	60022272	60019598	
Finishing File 60/.02	60022274	60019599	

Drying and Obturation

Size / Taper	HyFlex EDM Paper Points, 100 pcs	HyFlex EDM Guttapercha Points, 60 pcs
30/.04	60036503	60036504
40/.04	60022676	60022708
50/.03	60022741	60022709
60/.02	60022740	60022710



Opener



Shaper



Glider



Finisher

Your Endo Guide

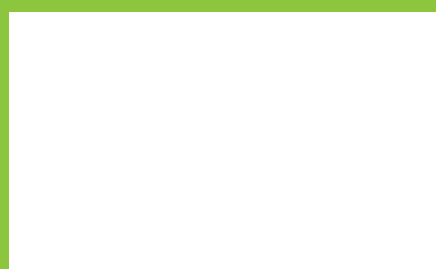
Practical. Innovative. Leading the way.

COLTENE provides simple, safe, and efficient solutions for every step of the endo process, carefully guiding the dentist through every endodontic situation with dedicated training and experienced endo consultants.

Our portfolio, which has been refined over decades, includes innovative consumables and sophisticated equipment that reliably covers all five treatment steps.



© COLTENE – www.coltene.com



Imprint / Publisher

Coltène/Whaledent AG
Feldwiesenstrasse 20
CH-9450 Altstätten
+41 71 757 5300
info.ch@coltene.com

Sales Contact

Coltène/Whaledent Ltd.
The President Suite
Kendal House, Victoria Way
Burgess Hill, West Sussex
RH15 9NF/UK
+44 1444 235486
info.uk@coltene.com

Service Center

service@coltene.com
00 800 11 0000 12 (U/F/N)
Mon.-Fri. 8:00 to 17:00 MESZ

 **COLTENE**