

ULTRASONIC DEVICE



# CanalPro™ EndoUltra

Ultrasonic activation for shorter irrigation time

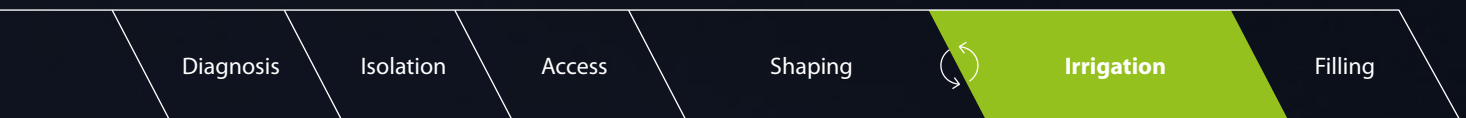
 COLTENE

# Time saving

Higher cleansing performance in less time due to ultrasonic activation

## Duration of Root Canal Treatment

Rotary Instrumentation



Rotary Instrumentation + Activation of Irrigant



### Features

- Cordless and rechargeable handpiece
- No presetting's needed
- Including power level indicator and LED lightning
- Operating time of one hour fully charged

# Highly efficient cleaning

power leads to time saving disinfection

Using the CanalPro EndoUltra with its ultrasonic power shortens the final rinse up to 50%.<sup>1</sup> Compared to sonic activation, the EndoUltra works with a 200 times higher frequency of 40.000 Hz and the physical principle of cavitation.<sup>2</sup> This supports the penetration of the irrigation solutions and leads to significantly cleaner root canal systems in less time.<sup>3</sup>

- Activation sequences of 30 to 60 seconds
- Ultrasonic frequency range between 40 and 50 kHz
- Cavitation and ultrasound propagation in the irrigation solution

## Protect

the root canal anatomy  
with gentle activation tips



less than 1.5 %  
of dentin loss<sup>6</sup>

The flexibility of the no cutting and passive titanium tips allows a better adaptation to even curved canals since they can be bent slightly.

- Flexible, smooth and passive bendable intra-canal ultrasonic tip
- 3 depths markers (16, 17 & 18 mm)



# Optimize your cleaning and disinfection

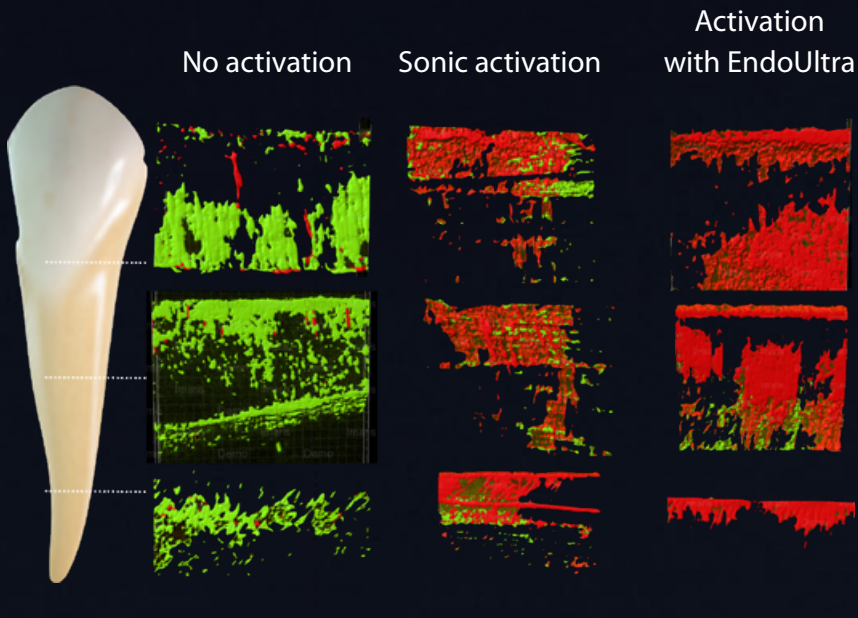
Activating rinsing solutions makes a significant contribution to thorough cleaning and disinfection of all areas of the root canal system.<sup>3</sup> This increases the long-term success of the endodontic treatment.<sup>5</sup>



## **Press and clean**

Activating the rinsing solutions leads to significant cleaner root canals. The cordless handpiece is always ready for use thanks to the preset settings. No unnecessary time consuming needed, just press and clean.

## Highlighting of the bacterial load by fluorescence



● High  
● None

F. Carrara, Brescia University  
Italy, 2015

## Clinical Case

Dr. Riccardo Tonini, Italy

The activation with EndoUltra let a lateral canal located in the apical-third to be disinfected and filled.

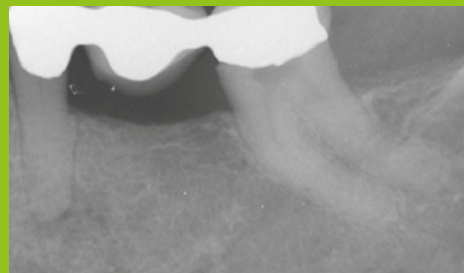


Fig. 1: Pre-operative X-ray of the necrotic tooth n°35 with a dental bridge implant.

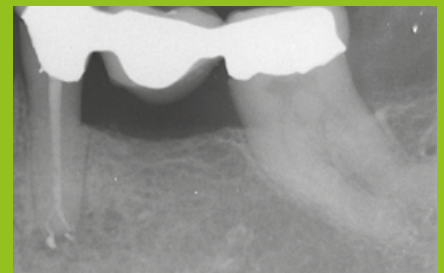


Fig. 2: Post-operative X-ray after shaping. Final rinse in 5 successive cycles of NaOCl activated during 30s with EndoUltra, followed by a cycle with EDTA and a final rinse with distilled water then obturation.

- (1) Zehnder, Matthias & Lehnert, B & Schönenberger, K & Waltimo, Tuomas. (2003). Spüllösungen und medikamentöse Einlagen in der Endodontie. Schweizerische Monatsschrift für Zahnmedizin. 113. 10.5167/uzh-2583. According to the CanalPro EndoUltra IFU you need 5 cycles of 30 to 60 seconds each per root canal with the CanalPro EndoUltra
- (2) Howard Martin (1976) Ultrasonic disinfection of the root canal
- (3) Nusstein J., et al. – J Endod (2005) in vivo debridement efficacy of ultrasonic irrigation following hand rotary instrumentation in human mandibular molars
- (4) Krishna, P, Beena, R., & Bharani, D. (2010). A comparison of root canal preparations using stainless steel, Ni-Ti hand, and Ni-Ti engine-driven endodontic instruments – an in vitro study. Bangladesh Journal of Medical Science, 09(4).
- (5) Martin, H., & Cunningham, W. (1985). Endosonics – The ultrasonic synergistic system of endodontics. Dental Traumatology, 1(6), 201–206.
- (6) Victoria Jane Ball (2016) – A Micro-Computed Tomographic Assessment of Dentin Removal. Following Ultrasonically Activated Irrigation Comparing Stainless Following Ultrasonically Activated Irrigation Comparing Stainless Steel and Nickel-Titanium Tips Steel and Nickel-Titanium Tips



# Order Information

## CanalPro EndoUltra Ultrasonic Activation Kit

- 60024189 3 × Activator tip
- 100 × Protective sleeve for single use
- 2 × Handpiece nose
- 1 × Power supply
- 1 × Wrench for activator tip

## Accessories

- 60024190 3 × Activator tip
- 60024191 100 × Protective sleeve for single use
- 60024192 2 × Handpiece nose
- 60024193 1 × Power supply
- 60024194 1 × Wrench for activator tip

# CanalPro™ SyringeFill & Irrigation Solutions

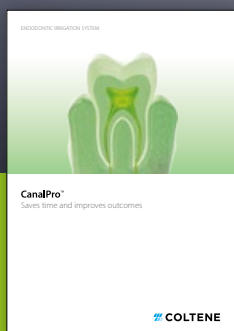
## SyringeFill

Innovative, modular system for the safe and efficient filling of syringes with irrigation solutions

- Protects against contamination
- Safe and clean dispensing
- Time-saving one-hand use
- Prevents loss of material
- Colour-coding for a safe and simplified workflow

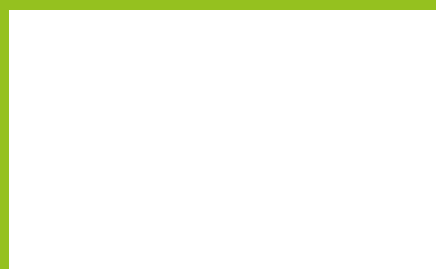
## Irrigation Solutions

- High quality and time saving irrigation solutions due to shortened exposure time
- Lead to better and consistently good results



For best results complete the procedure with CanalPro SyringeFill and Irrigation Solutions. Please take a look at the brochure or visit our website for more information.

© COLTENE – [www.coltene.com](http://www.coltene.com)



**Coltène/Whaledent Ltd.**  
The President Suite  
Kendal House, Victoria Way  
Burgess Hill, West Sussex  
GB-RH15 9NF  
+44 1444 235486  
[info.uk@coltene.com](mailto:info.uk@coltene.com)

**Coltène/Whaledent AG**  
Feldwiesenstrasse 20  
CH-9450 Altstätten  
+41 71 757 5300  
[info.ch@coltene.com](mailto:info.ch@coltene.com)



**COLTENE**