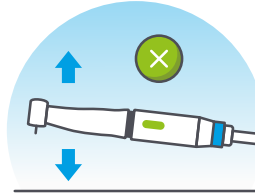


# Quick Facts On Jeni-Move



Don't press too hard – only apply smooth pressure towards the apex!



No pecking or brushing anymore!



Keep your foot on the pedal.



**Short beep:**  
Stops at the apex;  
display shows apex  
measurement.



**Long beep:**  
Rinsing notification moves  
you backwards out of the canal;  
display shows warning.



Work with it –  
not against it.